

PRODUCT IMAGE



OVERVIEW

AGT's small Shoe Box Light is versatile, rugged, and attractive. The ZQ01 is available in wattages up to 120. This compact Shoebox features a heavy duty, powder coated, die-cast aluminum housing coupled with a high impact tempered glass lens mounted with a weather seal gasket. The lens door opens to the front for easy access.

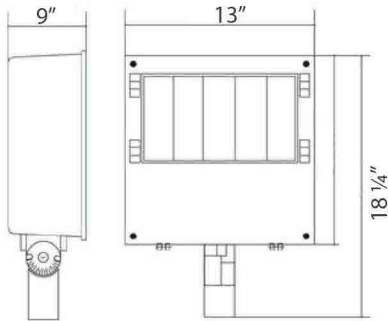
The large processor compartment provides heat dissipation for assured long life. The mirror quality aluminum reflector pushes light out in a broad pattern to illuminate walls, walkways, and parking lots. The ZQ01 also works well as a wall pack for accent lighting on building perimeters. Excellent outdoors, all-around facilities for added security.

The die-cast aluminum processor case is IP65 rated, suitable for wet locations. This fixture is a workhorse in temperatures from -25 to 125 F., with a lumen maintenance of 70% at 100,000 hours.

The ZQ01 is powered by a Rectangular Tubular induction lamp driven by a 110-277v solid-state processor for 100,000 hour life, CRI >85, Flicker free, Instant-on, and instant re-strike performance. The processor is dimmable to 50%, it has a power factor >0.96 and complies with all FCC and ANSI ratings.

AGT fixtures can comply with ARRA Made In America requirements.

PRODUCT SPECIFICATIONS



FEATURES

- ▶▶ The Fixture 18 1/4" wide, 13" tall, and 9" deep.
- ▶▶ Fixture is rated IP65.
- ▶▶ Highly polished, mirror quality, vacuum coated aluminum reflector.
- ▶▶ Large processor case to maximize low operating temperature for assured long life.
- ▶▶ Easy mount with slipfitter or arm mount.
- ▶▶ Available in 80w, 100w and 120 watts.

ORDER FORM

PROJECT

TYPE

WATTAGES	VOLTAGE	KELVIN	KEY	AVAILABLE OPTIONS
▶ 80w	▶ UNV	▶ 5,000	▶ DIM =	▶ Dimmable
▶ 100w	▶ 347v	▶ Custom	▶ SLF =	▶ Slipfitter
▶ 120w	▶ 480v		▶ 6ARM =	▶ 6" Arm
	▶ 24v DC			

NOTES

- + Universal Voltage (UNV): 110-277v
- + 480v Requires Transformer
- + Standard Kelvin: 5,000
- + Custom Kelvin: 2,700 - 6,500

ZQ01

EXAMPLE ZQ01 80-UNV-5000-DIM-SLF-6ARM

NOTE Additional options are to be written in the next available box.

APPROVALS

CERTIFICATIONS

10 Year Limited Warranty
UL cUL 1598 Standards
ISO 9001, ISO 140001
IP65

LAMP SPECIFICATIONS

LAMP LIFE: 100, 000 hrs.
LUMEN MAINTENANCE: 70% @ 100, 000 hrs.
KELVIN: 3, 000 - 6, 500 k
RATED LIFE EXPECTANCY: 100, 000 hrs.

- + High quality phosphor coating manufactured by Toshiba
- + High lighting efficacy, stable output, flicker-free, low loss, constant output
- + Excellent vibration and shock resistance

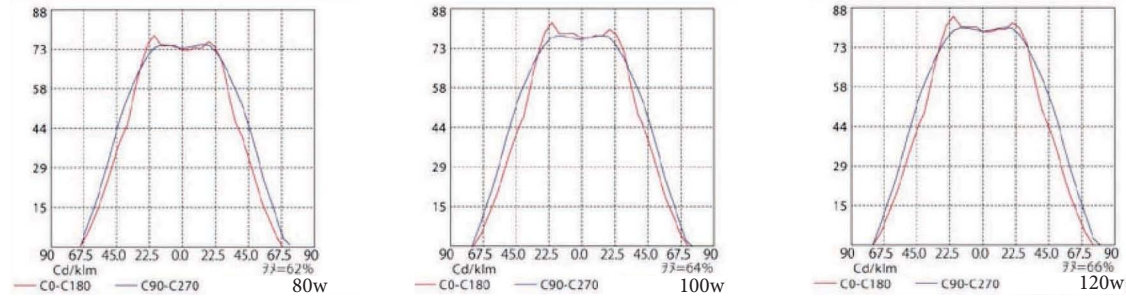
PROCESSOR SPECIFICATIONS

INPUT VOLTAGE: 110 - 277V/347V/480V/24V dc
POWER FACTOR: > .96
AMBIENT TEMPERATURE: -25 TO 125f
THD: < 5%
STANDARD VOLTAGE: 110 - 277 (Volts AC)
MINIMUM INPUT VOLTAGE: 90 (Volts AC)
MAXIMUM INPUT VOLTAGE: 305 (Volts AC)
MINIMUM INPUT FREQUENCY: 47 (Hertz)
MAXIMUM INPUT FREQUENCY: 63 (Hertz)
INRUSH CURRENT: < 60 (Amperes)
MINIMUM OUTPUT FREQUENCY: 210 (KiloHertz)
NOMINAL OUTPUT FREQUENCY: 240 (KiloHertz)
MAXIMUM OUTPUT FREQUENCY: 250 (KiloHertz)
COMMON MODE: +/- 2kv
RoHS 5 COMPLIANCE: Yes
PROTECTION - NO LOAD: Yes
PROTECTION - LOAD SHORT: Yes
PROTECTION - LAMP REMOVED: Yes

LOW AMBIENT OPERATING TEMPERATURE: (Ta) -40f
HIGH AMBIENT OPERATING TEMPERATURE: (Ta) 160f
NORMAL START: (Ta) -40
MAX CASE TEMPERATURE: (Tc) 160f
ISOLATION RESISTANCE - HOT STATE: < 200m
ISOLATION RESISTANCE - COLD STATE: 500m
ISOLATION VOLTAGE: 2,000 Vac (S 10ma) 10s
IGNITION VOLTAGE: 2,700 +/- 200Vpp
DIFFERENTIAL MODE: +/- 1kV
COOLING: Natural

HARMONIC CURRENT: ANSI C82.11/IEC(EN)61000-3-2/GB17625
ELECTROMAGNETIC EMISSION: FCC CFR part18/EN55015/CISPR15/GB17743
ESD: IEC 61000-4-2 Level3
ELECTROMAGNETIC COMPATIBILITY IMMUNITY: IEC61547/EN61547/EN61000-4-5
SAFETY STANDARDS: IEC(EN)61347-1/IEC(EN)61347-2-3
UL935/CAN?CSA C22.2
No. 74-96
SAFETY STANDARD: GB19510.1/GB19510.4
SAFETY APPROVALS: UL, CE, FCC, and CCC

PHOTOMETRICS



VARIABLE INFORMATION

■ WATTAGES	■ INPUT WATTAGE	■ VEL	■ RATED LUMENS	■ LM/W	■ CRI	■ STANDARD KELVIN	■ HID EQUIVELANT
80w	80 - 84w	11760	6000	75	>80	5,000k	150/175w
100w	100 - 104w	14700	7400	75	>85	5,000k	200/250w
120w	120 - 125w	18816	9600	80	>85	5,000k	250/300w