



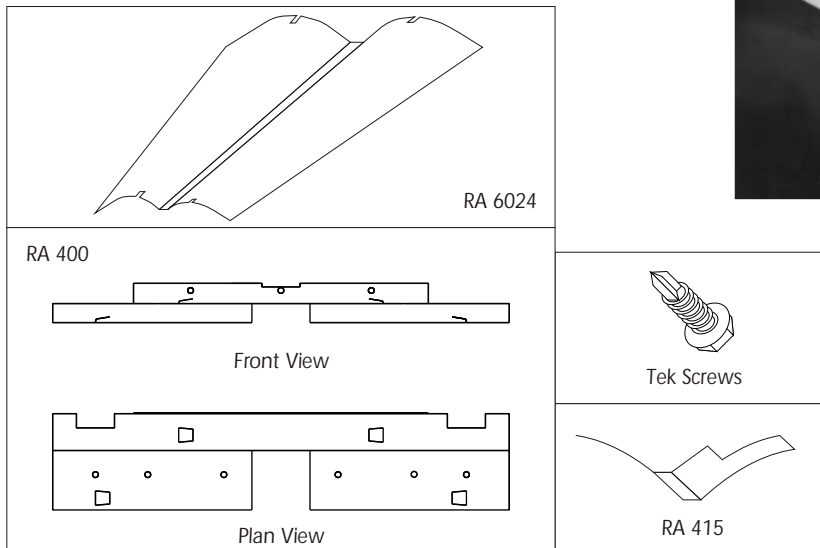
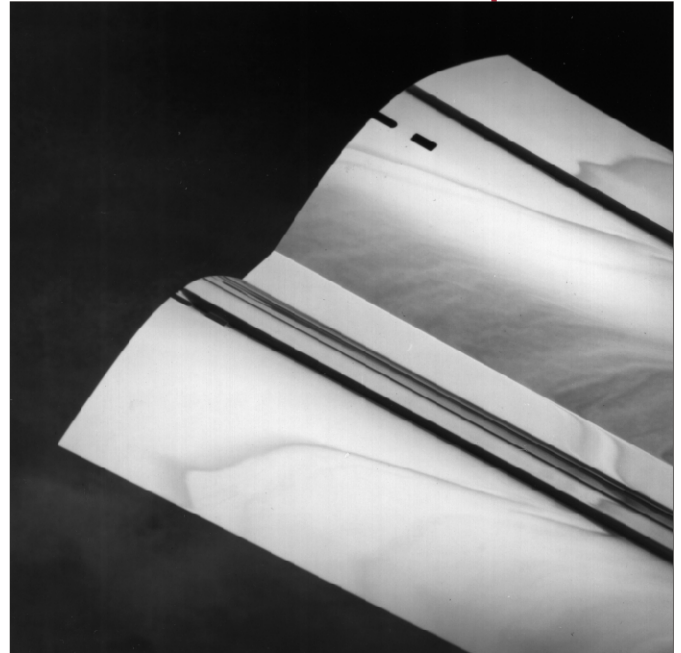
A.L.P.

7000 SERIES REFLECTOR KIT

For Quick, Simple Retrofit of Grid Ceiling Fixtures

7000 Series Reflector Kit

7000 Series is a **complete reflector system**, including socket plates for lamp relocation, to provide maximum efficiency. Used to **delamp from 4 lamps to 2 T8 lamps** in grid ceiling 2' x 2' or 2' x 4' troffers. This retrofit system allows for removal and discarding of the ballast cover, relocation of lamps, **optimizing light output** and **reducing energy consumption** to comply with utility rebate requirements. The 7000 Reflector Kit is U.L. classified as a ballast cover.



Catalog No.	Description	Length
RA 7022 KIT	(1) RA 6022 2' Reflector - 2' X 2' Troffer (2) RA 400 Socket Plates (2) RA 415 Bridges (4) TEK Screws	2'
RA 7024 KIT	(1) RA 6024 4' Reflector - 2' x 4' Troffer (2) RA 400 Socket Plates (2) RA 415 Bridges (4) TEK Screws	4'
NOTE: FOR SPECULAR LAMINATE ON ALUMINUM, DELETE PREFIX "RA" AND REPLACE WITH "RF" OR FOR WHITE ALUMINUM DELETE "RA" AND REPLACE WITH "RW".		

**For more information, or to place an order,
contact Customer Service.**

INSTALLATION INSTRUCTIONS, 7000 SERIES

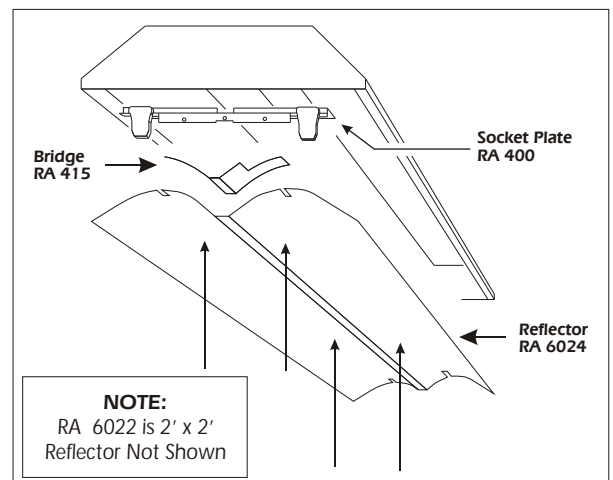
Installation instructions for converting 4 lamp, 2' x 2' or 4 lamp 2' x 4' troffer to 2 T8 lamp 2' x 2' or 2' x 4' using the RA 7000 Series Reflector System backwire only (Type II conversion).

CONTENTS: 1 RA 6022 or 6024 Reflector, 2 RA 400 Brackets, 2 RA 415 Bridges and 4 Tek Screws.

- WARNING:** Risk of fire or electric shock. Reflector kit installation requires knowledge of fluorescent lighting fixture electrical systems. If not qualified, do not attempt installation. Contact a qualified electrician.
- WARNING:** Reflector kit is not intended to be used for damp or wet locations.
- WARNING:** Risk of fire or electric shock. Install this kit only in the fixture that has construction features shown in the drawings.
- WARNING:** To prevent wiring damage or abrasion, do not expose wiring to edges of sheet metal or other sharp objects.
- WARNING:** Risk of fire or electric shock. Fixture wiring, ballasts, or other electrical parts may be damaged when drilling for installation of reflector kit hardware. Check for enclosed wiring and components.

NOTE: Do not remove clear protective film from reflector until Step #8.

- 1 Turn off and lock electrical power to the lighting fixture during the installation process.
- 2 Open or remove fixture doorframe (with lens or louver) from lighting fixture to gain access to the interior of the fixture.
- 3 Remove lamps, ballast covers and lampholder brackets.
- 4 Disconnect ballast to be removed and remove completely with related wire and lampholders from fixture. Ensure remaining ballast is adequately connected to circuit and unused wires are capped off and secured with U.L. listed electrical tape.
- 5 Reinstall remaining lampholders into new socket brackets, route wires preventing any pinching or damage to wires leading to the ballast.
- 6 Center socket brackets on each end of fixture and fasten using TEK screws provided.
- 7 Remove protective film from bridges and insert bridges into tabs on socket brackets.
- 8 Remove protective film from reflector and insert reflector into tabs on socket brackets.
- 9 Replace lamps.
- 10 Re-install fixture door with lens or louver.
- 11 Reconnect power.



A.L.P.
LIGHTING COMPONENTS, INC.
CORPORATE HQ: CHICAGO, IL U.S.A.

Available from GoodMart
(877) 402-6100 • Fax: (347) 402-6100 • Buy online: www.GoodMart.com
© 1999 A.L.P. LIGHTING COMPONENTS, INC., PRINTED IN THE U.S.A., REF7 068