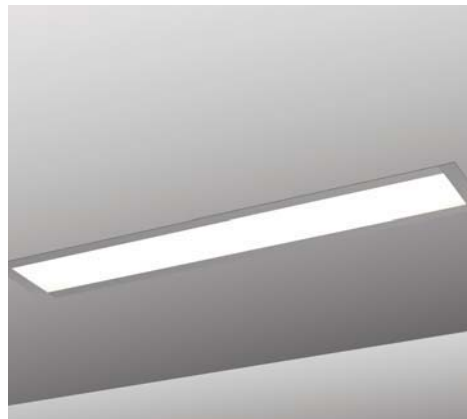


# LIGHTPLANE LINEAR RECESSED 3-1/2"

## SPECIFICATION GUIDE



# LIGHTPLANE LINEAR RECESSED- 3-1/2" Profile

Page 1 of 4

TYPE:

## Specification and Ordering Information:

### 1. Style:

- ☐ LPLR3.5T - Trim with Flush Lens (LPLR3.5T)
  - ☐ LPLR3.5 - Trimless with Flush Lens (LPLR3.5)
  - ☐ \* LPLR3.5TDL - Trim with Drop Lens (LPLR3.5TDL)\*
  - ☐ \* LPLR3.5TRL rim with Regressed Lens (LPLR3.5TRL)\*
- \* Available with Trim Only

### 2. Mounting:

- ☐ DRY - Drywall (DRY)
  - ☐ \*TGRID Exposed T-Grid -15/16" (TGRID)
  - ☐ \*SLOT - Exposed Slot T-Grid -9/16" (SLOT)
  - ☐ \*HDC - Hunter Douglas® Techstyle Classic (HDC)
  - ☐ \*HDT - Hunter Douglas® Techstyle Traditional (HDT)
  - ☐ \*HDI - Hunter Douglas® Integrated - Consult Factory (HDI)
  - ☐ \*ATZ - Armstrong® Techzone - Consult Factory (ATZ)
- \* Available with Trim Only

### 3. Overall Run Length:

- ☐ Individual (2', 3', 4', 5', 6', 7', 8')
- ☐ Continuous (Enter total run length, i.e 20')

### 4. Lamps (X-Sect):

- ☐ 1 - Single (1)
- ☐ 2 - Dual (2)

### 5. Linear Lamping

- ☐ N/A - Open channel for downlighting only (N/A)
  - ☐ FSO - Fluorescent - Standard Output (FSO)
  - ☐ FHO - Fluorescent - High Output (FHO)
  - ☐ \*\*HP7- 80 LPW High Performance LED White 3500° 7W/LF (HP7)
  - ☐ HP14- 80 LPW High Performance LED White 3500° 14W/LF (HP14)
  - ☐ RGB - LED Color Changing (RGB)-Consult Factory for Control Interface Options
  - ☐ T8 - Fluorescent T8 (T8)
  - ☐ LXHO - Seamlessline lamp (LXHO Feelux High Output)\*
  - ☐ LXHE - Seamlessline lamp (LXHE Feelux High Efficiency)\*
- \*See Option 1A

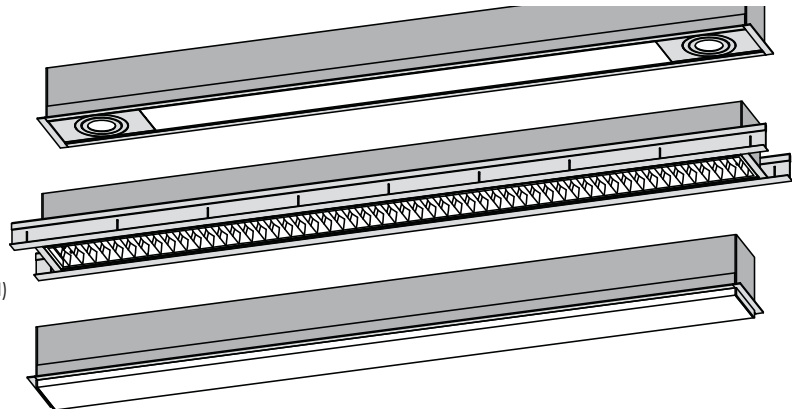
lighting  
facts  
LED Product Portfolio

### 6. Lamp Configuration:

- ☐ N/A - Leave blank for downlight only (N/A)
  - ☐ N/A - Leave blank for linear LED (N/A)
  - ☐ R - Regular (R)
  - ☐ S - Staggered (S)
- \* Not applicable in Seamlessline or LED specification

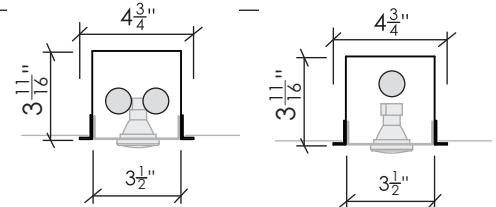
### 7. Linear System Control:

- ☐ LLED - LED Power Supply, non-dim (LLED)
  - ☐ LLED-DIM - LED Power Supply with 0-10V dimming (LLED-DIM)
  - ☐ LSTD - Standard Electronic, non-dim <10%THD (LSTD)
  - ☐ LRGBSEQ - RGB with integral sequencer, no control (LRGBSEQ)
  - ☐ LRGBDIM - RGB with 0-10V Dimming Control Wires (controllers not included) (LRGBDIM)
  - ☐ LRGBDMX - RGB with DMX Interface module (DMX controller not included) (LRGBDMX)
  - ☐ \* LMK7 - Advance Mark 7® Dimming 0-10V (MK7)
  - ☐ \* LMK10 - Advance Mark 10® Dimming (MK10)
  - ☐ \* LHILUME - Lutron Hilume 3-D® (HILUME3D)
  - ☐ \*\* LHILUME-A - Lutron Hilume A Series LED® (HILUME-A)
  - ☐ \* LHSeries - Lutron H-SERIES® Dimming (HSERIES)
  - ☐ \* LEOSYS - Lutron ECOSYSTEM® Dimming (ECOSYS)
  - ☐ \* LBALSTAR - Ballastar® Light level switching (BALSTAR)
  - ☐ \* LUSD - Superdim® Dimming (USD)
  - ☐ \* LQUICK - Osram Quicktronic® Dimming (QUICK)
- \*Please consult ballast manufacturer for lamp/ballast compatibility.  
\*\* OPTION FOR LINEAR LED ONLY

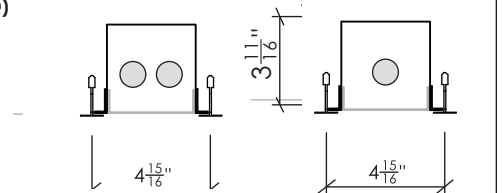


## ALL PROFILES AVAILABLE IN ONE OR TWO LAMP CROSS SECTIONS

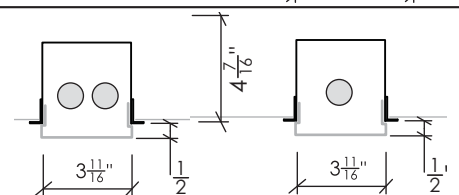
LPLR3.5T (WITH TRIM) FLUSH LENS



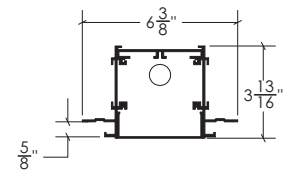
LPLR3.5T (GRID)



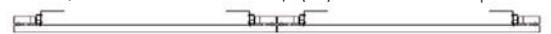
LPLR3.5TDL (WITH TRIM) 5/16" DROP



LPLR3.5 (TRIMLESS) - SHOWN WITH MUDDING WINGS FOR DRYWALL INSTALLATION



## \*1A - Option: Seamlessline Lamp (LX) End to End Lamp Mounting



\*Channel dimensions identical to standard T5 lamping. Luminous ends eliminate the need for staggered lamping. Consult factory for additional details.

Continued on Next Page

Architectural Lighting Works reserves the right to make changes to fixture design, finish and engineering at any time.

# LIGHTPLANE LINEAR RECESSED- 3-1/2" Profile

Page 2 of 4

TYPE:

## 8. Downlight Option (leave blank if none):

- ☐ MR16 - 50 W MR16 Halogen (MR16)
- ☐ 20 W CMH 20W CMH-MR16 GX10 Base(GX1020)
- ☐ 39 W CMH 20W CMH-MR16 GX10 Base(GX1039)
- ☐ LED MR16 - 6W LED MR16 GU5.3 Base (LEDMR16)

## 8a. Downlight Quantity:

- ☐ Enter total quantity downlights per run length

Outer Dimensions of Each Downlight is 7.25"

## 9. Downlight Control:

- ☐ DND - Non-Dlm (DND)
- ☐ DTRIAC - Triac Dimming, 120V only (DTRIAC)

## 10. Voltage:

- ☐ 120 - 120 volt (120)
- ☐ 277 - 277 volt (277)
- ☐ UNV - Universal voltage (UNV) (Fluorescent Only)
- ☐ 347 - 347 volt (not available in dimming) (347)

## 11. Linear Lens options:

- ☐ EXT - Extra Diffuse Lens (EXT)
- ☐ LV - Louver (LV)
- ☐ BLANKS- Fill All Blanks with Filler Panels (BLANKS)

## 12. Linear Accessory options:

- ☐ \*HEX - Hexcell Louver (HEX)
- ☐ \*LSS - Linear Spread Lens (LSS)
- ☐ \*SOL - Solite Lens (SOL)
- ☐ \*SNT - Snoot (SNT)
- \* Not Available in LED. Consult factory for LED louver options

## 11. Finish:

- ☐ \* AL (Natural "Ultimate" aluminum)
- ☐ BK (Black powdercoat)
- ☐ WH (White powdercoat)
- ☐ RAL (Specify RAL # of powdercoat of your choice)

\* AL is standard on all Lightplane Linear product

## 12. Additional Options (Leave blank if None):

- ☐ \*OS - Occupancy Sensor (OS)
- ☐ \*PH - Photocell - Consult Factory (PH)
- ☐ EM - Emergency Ballast (EM)
- ☐ EMC - Emergency Circuit (EMC)
- \*\*Consult factory for size constraints

\*\*LED Information relating to HP7 option (2 FT section)


ARCHITECTURAL LIGHTING WORKS

# lighting facts®

A Program of the U.S. DOE

Light Output (Lumens)	990
Watts	15.7
Lumens per Watt (Efficacy)	63

Color Accuracy	83
Color Rendering Index (CRI)	

Light Color Correlated Color Temperature (CCT)	3437 (Bright White)		
			
Warm White	Bright White	Daylight	
2700K	3000K	4500K	6500K

All results are according to IESNA LM-79-2008: Approved Method for the Electrical and Photometric Testing of Solid-State Lighting. The U.S. Department of Energy (DOE) verifies product test data and results.

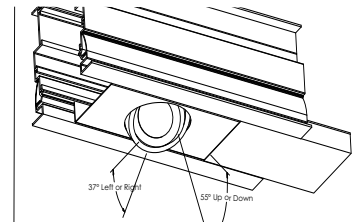
Visit [www.lightingfacts.com](http://www.lightingfacts.com) for the Label Reference Guide.

Registration Number: POP5-W7FCFP (4/19/2012)

Model Number: LPLR3 5T-2-HP7-R-LED-EXT-AL-3500K

Type: Surface-mounted fixture (other)

Continued on Next Page



Shown: Adjustable 7.25" Downlight Option - Note Aiming angles may vary depending on LED source.



Shown: Hinged Access Canopy(7.25") for Downlight (when positioned next to linear fluorescent).



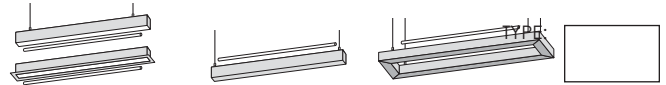
Shown: Corner Options in Wall and Ceiling Available - Consult Factory



Shown: Corner Options in Wall and Ceiling Available - Consult Factory

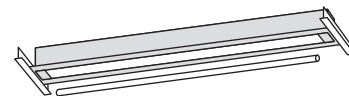
# LIGHTPLANE LINEAR RECESSED- 3-1/2" Profile

Page 3 of 4



Nominal Length	T5 Lamp Configurations	Stagger Overlap	LPLR, LPLD LPLR3.5 Fixture Length	LPLI Fixture Length	LP11, LP15 Fixture Length
2'		none	2'	2'1"	2'5"
3'		none	3'	3'1"	3'5"
4'		none	4'	4'1"	4'5"
5'		none	4'11"	5'1"	5'5"
6'		none	5'10"	6'	6'5"
6'		6"	6'3"		
7'		none	6'10"	7'	7'5"
7'		6"	7'3"		
8'		none	7'10"	8'	8'5"
8'		4.5"	7'10"		
9'		none	8'7"	8'9"	9'5"
9'		5"	8'7"		
10'		none	9'9"	9'11"	10'5"
10'		5"	9'9"		
11'		none	10'8"	10'11"	11'5"
11'		5"	10'8"		
12'		none	11'8"	11'11"	12'5"
12'		4"	11'4"		
Notes:	14/24W = 2' 21/39W = 3' 28/54W = 4' 35/80W = 5'		Contact factory for exact sizes, or custom		Downtight modules may affect length

All chart data reflects an estimated length. For exact measurements, please consult factory and submittal drawings per specification. Lengths subject to change.



TBar Distance	T5 configurations	Stagger Overlap	End Panels	Direct Lamp Fixture Length
2'		none	none	23.75"
4'		none	none	47.75"
6'		none	2x1"	71.75"
6'		4"	2x3"	71.75"
8'		none	2x1"	95.75"
8'		5"	2x1"	95.75"
10'		none	2x2"	119.75"
10'		4"	2x1"	119.75"
12'		none	2x2"	143.75"
12'		4"	2x1"	143.75"

End Panels are small aluminum plates to optimize staggered lamping for a more continuous lamp quality. End panels are placed at the end of runs to cover any dark space.

Architectural Lighting Works reserves the right to make engineering changes at any time. Always consult factory for exact measurements.

Architectural Lighting Works reserves the right to make changes to fixture design, finish and engineering at any time.

# LIGHTPLANE LINEAR RECESSED- 3-1/2" Profile

Page 4 of 4

TYPE:

## Lamp Configuration Chart: Individual and Continuous

Regular	2'	3'	4'	5'	6'	7'	8'	9'	10'	11'	12'
14 or 24w T5	1								1		
21 or 39w T5		1			2	1		3		1	
28 or 54w T5			1			1	2		2	2	3
35 or 80w T5				1							

Staggered	2'	3'	4'	5'	6'	7'	8'	9'	10'	11'	12'
14 or 24w T5											
21 or 39w T5					1		3	2	1		3
28 or 54w T5					1	2		1	2	3	1
35 or 80w T5											

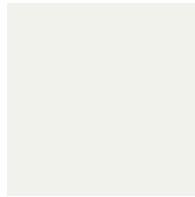
## Colors and Finishes:



STANDARD: "Ulti-matte" Natural aluminum : A two step, clear anodizing process that creates a smooth and durable surface.



OPTION: Black - BK powdercoat



OPTION: White - WH powdercoat

# RAL

OPTION: RAL - powdercoat the RAL color of your choice. Specify RAL code.

## Design Specifications

### Construction

Extruded architectural grade T6061 aluminum. Minimum wall thickness is .080" 100% recyclable. Reflectors are formed from .040 aluminum and finished in Titanium white powdercoat. Lenses are made from twin layered extruded high-impact acrylic. WD is a full frosted/transparent combination. EXT is a half frosted/white combination. Single piece construction aluminum louver with clear matte anodized finish.

### Electrical Details

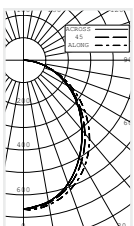
All ballasts are electronic <10% THD  
Class P electronic ballasts - Programmed start  
Standard and dimming ballasts are integral to channel (unless otherwise noted).  
Low voltage transformers are individual 75W units (277V/12V or 120/12V)  
LED options available (consult factory)  
Multiple interface options available including dimming, motion sensing, daylight harvesting and DALI.  
ETL listed Damp with Lens

### Emergency

Fixtures can be wired for emergency circuit or emergency battery backup.  
Emergency one-lamp ballasts provide 90 minutes of illumination. T5/T5HO = Initial output of 1300 Lumens

### Finish

All fixtures are standard in Ultimatte aluminum finish (AL) - A deep etch and two-step clear anodizing process that gives a smooth, clean and durable surface. Powder Coat options are available. Consult factory.



Spacing Criterion 1.2  
1.1

Catalog # LPLR3.5-DRY-4-1-FSO-R-120-EXT

Architectural Lighting Works reserves the right to make changes to fixture design, finish and engineering at any time.