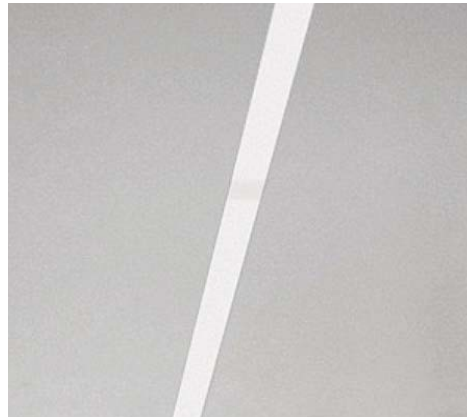


# LIGHTPLANE LINEAR RECESSED 3-1/2"

## SPECIFICATION GUIDE



# LIGHTPLANE LINEAR RECESSED- 3-1/2" Profile

Page 1 of 4

TYPE:

## Specification and Ordering Information:

### 1. Style:

- ☐ Trim with Flush Lens (LPLR3.5T)
- ☐ Trimless with Flush Lens (LPLR3.5)
- ☐ Trim with Drop Lens (LPLR3.5TDL)\*
- ☐ Trim with Regressed Lens (LPLR3.5TRL)\*

\* Available with Trim Only

### 2. Mounting:

- ☐ Drywall (DRY)
- ☐ Exposed T-Grid -15/16" (TGRID)
- ☐ Exposed Slot T-Grid -9/16" (SLOT)
- ☐ Hunter Douglas® Techstyle Classic (HDC)
- ☐ Hunter Douglas® Techstyle Traditional (HDT)
- ☐ Hunter Douglas® Integrated - Consult Factory (HDI)
- ☐ Armstrong® Techzone - Consult Factory (ATZ)

### 3. Overall Run Length:

- ☐ Individual (2', 3', 4', 5', 6', 7', 8')
- ☐ Continuous (Enter total run length, i.e 20')

### 4. Lamps (X-Sect):

- ☐ 1 - Single (1)
- ☐ 2 - Dual (2)

### 5. Linear Lamping

- ☐ FSO - Fluorescent - Standard Output (FSO)
- ☐ FHO - Fluorescent - High Output (FHO)
- ☐ LEDW5 - LED White 3000° 5W/LF (LEDW5)
- ☐ LEDW10 - LED White 3000° 10W/LF (LEDW10)
- ☐ RGB - LED Color Changing (RGB)-Consult Factory for Control Interface Options
- ☐ T8 - Fluorescent T8 (T8)
- ☐ LXHO - Seamlessline lamp (LXHO Feelux High Output)\*
- ☐ LXHE - Seamlessline lamp (LXHE Feelux High Efficiency)\*

\*See Option 1A

### 6. Lamp Configuration:

- ☐ N/A - Leave blank for open channel for downlight only (N/A)
- ☐ N/A - Leave blank for linear LED (N/A)
- ☐ R - Regular (R)
- ☐ S - Staggered (S)

\* Not applicable in Seamlessline specification

### 7. Linear System Control:

- ☐ LLED - LED Power Supply, non-dim (LLED)
- ☐ LLED-DIM - LED Power Supply with 0-10V dimming (LLED-DIM)
- ☐ LSTD - Standard Electronic, non-dim <10%THD (LSTD)
- ☐ LRGBSEQ - RGB with integral sequencer, no control (LRGBSEQ)
- ☐ LRGBDIM - RGB with 0-10V Dimming Control Wires (controllers not included) (LRGBDIM)
- ☐ LRGBDMX - RGB with DMX Interface module (DMX controller not included) (LRGBDMX)
- ☐ \* LMK7 - Advance Mark 7® Dimming 0-10V (MK7)
- ☐ \* LMK10 - Advance Mark 10® Dimming (MK10)
- ☐ \* LHILUME - Lutron Hilume 3-D® (HILUME3D)
- ☐ \* LHSeries - Lutron H-SERIES® Dimming (HSERIES)
- ☐ \* LECOSYS - Lutron ECOSYSTEM® Dimming (ECOSYS)
- ☐ \* LBALSTAR - Ballastar® Light level switching (BALSTAR)
- ☐ \* LUSD - Superdim® Dimming (USD)
- ☐ \* LQUICK - Osram Quicktronic® Dimming (QUICK)

\*Please consult ballast manufacturer for lamp/ballast compatibility.

### 8. Downlight Option (leave blank if none):

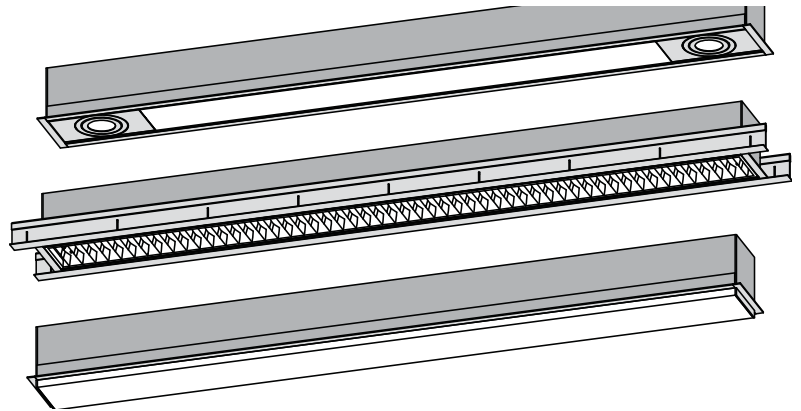
- ☐ MR16 - 50 W MR16 Halogen (MR16)
- ☐ 20 W CMH 20W CMH-MR16 GX10 Base (GX1020)
- ☐ 39 W CMH 20W CMH-MR16 GX10 Base (GX1039)
- ☐ LED MR16 - 6W LED MR16 GU5.3 Base (LEDMR16)

### 8a. Downlight Quantity:

- ☐ Enter total quantity downlights per run length

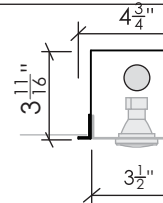
Outer Dimensions of Each Downlight is 5-3/8"

Continued on Next Page

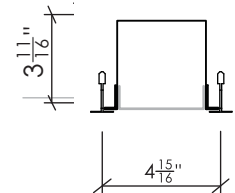


## ALL PROFILES AVAILABLE IN ONE OR TWO LAMP CROSS SECTIONS

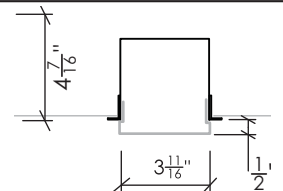
### LPLR3.5T (WITH TRIM) FLUSH LENS



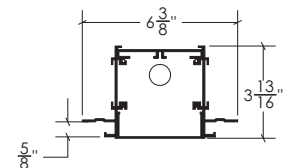
### LPLR3.5T (GRID)



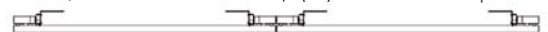
### LPLR3.5TDL (WITH TRIM) 5/16" DROP LENS



### LPLR3.5 (TRIMLESS) - SHOWN WITH MUDDING WINGS FOR DRYWALL INSTALLATION



### \*1A - Option: Seamlessline Lamp (LX) End to End Lamp Mounting



\*Channel dimensions identical to standard T5 lamping. Luminous ends eliminate the need for staggered lamping. Consult factory for additional details.



# LIGHTPLANE LINEAR RECESSED- 3-1/2" Profile

Page 2 of 4

TYPE:

## 9. Downlight Control:

- ☐ DND - Non-Dim (DND)
- ☐ DTRIAC - Triac Dimming, 120V only (DTRIAC)

## 10. Voltage:

- ☐ 120 - 120 volt (120)
- ☐ 277 - 277 volt (277)
- ☐ UNV - Universal voltage (UNV) (Fluorescent Only)
- ☐ 347 - 347 volt (not available in dimming) (347)

## 11. Linear Lens options:

- ☐ WD - Lens (WD)
- ☐ EXT - Extra Diffuse Lens (EXT)
- ☐ LV - Louver (LV)

## 12. Linear Accessory options:

- ☐ \*HEX - Hexcell Louver (HEX)
- ☐ \*LSS - Linear Spread Lens (LSS)
- ☐ \*SOL - Solite Lens (SOL)
- ☐ \*SNT - Snoot (SNT)
- \* Not Available in LED. Consult factory for LED louver options

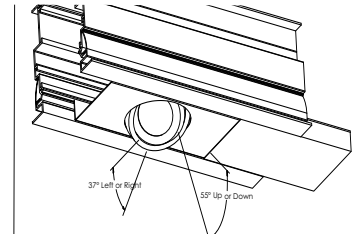
## 11. Finish:

- ☐ \* AL (Natural "Ultimatte" aluminum)
- ☐ BK (Black powdercoat)
- ☐ WH (White powdercoat)
- ☐ RAL (Specify RAL # of powdercoat of your choice)

\* AL is standard on all Lightplane Linear product

## 12. Additional Options (Leave blank if None:

- ☐ \*OS - Occupancy Sensor
- ☐ \*PH - Photocell - Consult Factory (OS)
- ☐ EM - Emergency Ballast (EM)
- ☐ EMC - Emergency Circuit (EMC)
- \*\*Consult factory for size constraints



Shown: Adjustable Downlight Option - Note Aiming angles may vary depending on LED source.



Shown: Hinged Access Canopy for Downlight (when positioned next to linear fluorescent)



Shown: Corner Options in Wall and Ceiling Available - Consult Factory

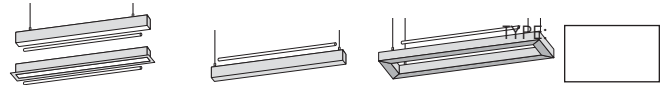


Shown: Corner Options in Wall and Ceiling Available - Consult Factory

Continued on Next Page

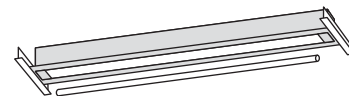
# LIGHTPLANE LINEAR RECESSED- 3-1/2" Profile

Page 3 of 4



| Nominal Length | T5 Lamp Configurations                          | Stagger Overlap | LPLR, LPLD<br>LPLR3.5<br>Fixture Length    | LPLI<br>Fixture Length | LP11, LP15<br>Fixture Length        |
|----------------|---|-----------------|--|------------------------|-------------------------------------|
| 2'             |   | none            | 2'   | 2'1"                   | 2'5"                                |
| 3'             |   | none            | 3'   | 3'1"                   | 3'5"                                |
| 4'             |   | none            | 4'   | 4'1"                   | 4'5"                                |
| 5'             |   | none            | 4'11"                                      | 5'1"                   | 5'5"                                |
| 6'             |   | none            | 5'10"                                      | 6'                     | 6'5"                                |
| 6'             |   | 6"              | 6'3"                                       |                        |                                     |
| 7'             |   | none            | 6'10"                                      | 7'                     | 7'5"                                |
| 7'             |   | 6"              | 7'3"                                       |                        |                                     |
| 8'             |   | none            | 7'10"                                      | 8'                     | 8'5"                                |
| 8'             |   | 4.5"            | 7'10"                                      |                        |                                     |
| 9'             |   | none            | 8'7"                                       | 8'9"                   | 9'5"                                |
| 9'             |   | 5"              | 8'7"                                       |                        |                                     |
| 10'            |   | none            | 9'9"                                       | 9'11"                  | 10'5"                               |
| 10'            |   | 5"              | 9'9"                                       |                        |                                     |
| 11'            |   | none            | 10'8"                                      | 10'11"                 | 11'5"                               |
| 11'            |   | 5"              | 10'8"                                      |                        |                                     |
| 12'            |   | none            | 11'8"                                      | 11'11"                 | 12'5"                               |
| 12'            |   | 4"              | 11'4"                                      |                        |                                     |
| Notes:         | 14/24W = 2' 21/39W = 3' 28/54W = 4' 35/80W = 5' |                 | Contact factory for exact sizes, or custom |                        | Downtight modules may affect length |

All chart data reflects an estimated length. For exact measurements, please consult factory and submit all drawings per specification. Lengths subject to change.



| TBar Distance | T5 configurations | Stagger Overlap | End Panels | Direct Lamp Fixture Length |
|---------------|-------------------|-----------------|------------|----------------------------|
| 2'            |                   | none            | none       | 23.75"                     |
| 4'            |                   | none            | none       | 47.75"                     |
| 6'            |                   | none            | 2x1"       | 71.75"                     |
| 6'            |                   | 4"              | 2x3"       | 71.75"                     |
| 8'            |                   | none            | 2x1"       | 95.75"                     |
| 8'            |                   | 5"              | 2x1"       | 95.75"                     |
| 10'           |                   | none            | 2x2"       | 119.75"                    |
| 10'           |                   | 4"              | 2x1"       | 119.75"                    |
| 12'           |                   | none            | 2x2"       | 143.75"                    |
| 12'           |                   | 4"              | 2x1"       | 143.75"                    |

End Panels are small aluminum plates to optimize staggered lamping for a more continuous lamp quality. End panels are placed at the end of runs to cover any dark space.

Architectural Lighting Works reserves the right to make engineering changes at any time. Always consult factory for exact measurements.

Architectural Lighting Works reserves the right to make changes to fixture design, finish and engineering at any time.

# LIGHTPLANE LINEAR RECESSED- 3-1/2" Profile

Page 4 of 4

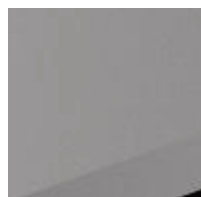
TYPE:

## Lamp Configuration Chart: Individual and Continuous

| Regular      | 2' | 3' | 4' | 5' | 6' | 7' | 8' | 9' | 10' | 11' | 12' |
|--------------|----|----|----|----|----|----|----|----|-----|-----|-----|
| 14 or 24w T5 | 1  |    |    |    |    |    |    |    | 1   |     |     |
| 21 or 39w T5 |    | 1  |    |    | 2  | 1  |    | 3  |     | 1   |     |
| 28 or 54w T5 |    |    | 1  |    |    | 1  | 2  |    | 2   | 2   | 3   |
| 35 or 80w T5 |    |    |    | 1  |    |    |    |    |     |     |     |

| Staggered    | 2' | 3' | 4' | 5' | 6' | 7' | 8' | 9' | 10' | 11' | 12' |
|--------------|----|----|----|----|----|----|----|----|-----|-----|-----|
| 14 or 24w T5 |    |    |    |    |    |    |    |    |     |     |     |
| 21 or 39w T5 |    |    |    |    | 1  |    | 3  | 2  | 1   |     | 3   |
| 28 or 54w T5 |    |    |    |    | 1  | 2  |    | 1  | 2   | 3   | 1   |
| 35 or 80w T5 |    |    |    |    |    |    |    |    |     |     |     |

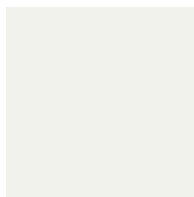
## Colors and Finishes:



STANDARD: "Ulti-matte" Natural aluminum : A two step, clear anodizing process that creates a smooth and durable surface.



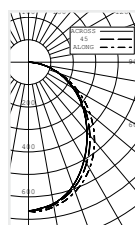
OPTION: Black - BK powdercoat



OPTION: White - WH powdercoat

# RAL

OPTION: RAL - powdercoat the RAL color of your choice. Specify RAL code.



Spacing Criterion 1.2  
1.1

Catalog # LPLR3.5-DRY-4-1-FSO-R-120-EXT

## Design Specifications

### Construction

Extruded architectural grade T6061 aluminum. Minimum wall thickness is .080" 100% recyclable. Reflectors are formed from .040 aluminum and finished in Titanium white powdercoat. Lenses are made from twin layered extruded high-impact acrylic. WD is a full frosted/transparent combination. EXT is a half frosted/white combination. Single piece construction aluminum louver with clear matte anodized finish.

### Electrical Details

All ballasts are electronic <10% THD  
Class P electronic ballasts - Programmed start  
Standard and dimming ballasts are integral to channel (unless otherwise noted).  
Low voltage transformers are individual 75W units (277V/12V or 120/12V)  
LED options available (consult factory)  
Multiple interface options available including dimming, motion sensing, daylight harvesting and DALI.  
ETL listed Damp with Lens

### Emergency

Fixtures can be wired for emergency circuit or emergency battery backup.  
Emergency one-lamp ballasts provide 90 minutes of illumination.  
T5/T5HO = Initial output of 1300 Lumens

### Finish

All fixtures are standard in Ultimatte aluminum finish (AL) - A deep etch and two-step clear anodizing process that gives a smooth, clean and durable surface. Powder Coat options are available. Consult factory.



Architectural Lighting Works reserves the right to make changes to fixture design, finish and engineering at any time.