

Type:



- Housing is formed and welded, 20 ga. steel, chemically treated to resist corrosion and enhance paint adhesion
- Standard finishes are Fluoroscope White, black, silver, platinum and bronze powder coat. Includes machined aluminum socket covers in matching finish
- Available for 20", 34", 40", 50" and 60" nominal length linear T6 fluorescent lamp in single fixture or continuous run configurations
- Continuous run fixtures include 7 amp power quick connects
- Single and Starter fixtures include coordinating (white, black, metal braided) 18 ga. power cable
- Includes Ø1/16" aircraft cable, Ø5" power feed canopy (white), Ø2" supplemental canopy (white) and ceiling couplers
- Includes electronic 120V or 277V rapid start ballast
- 10% dimming ballast available (requires interface, consult factory for availability and system compatibility)
- Integral emergency ballast available (60" non-dimming only, 1000 lumens, consult factory)
- Accessory reflector available
- Non-dimming fixtures are UL/ULC listed for damp location and through wiring
- Dimming fixtures are UL/ULC listed for dry location and through wiring
- IBEW manufactured and labeled
- Made in U.S.A.

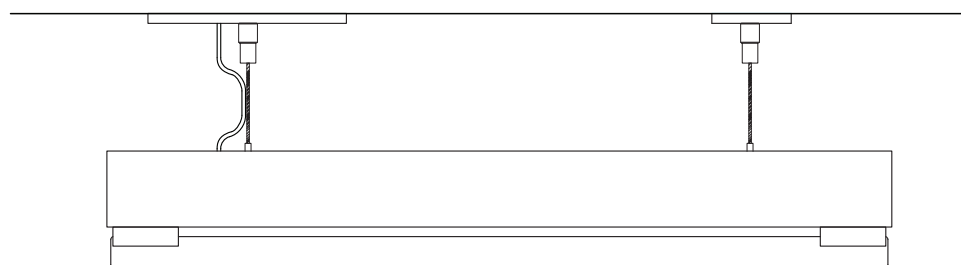
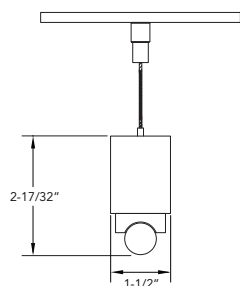
Lengths	Voltage	Ballast	Config.	Mount	Finish
BT6300 + 50 +	120 +	+ [] +	ADD +	CM96 +	BL
Section 1	Section 2	Section 3*	Section 4	Section 5	Section 6
<ul style="list-style-type: none"> **20: 17W, 19-23/32" **34: 27W, 33-1/2" *40: 30W, 39-13/32" *50: 38W, 49-7/32" *60: 45W, 59-1/16" *4040: 2x30W, 78-13/16" *5050: 2x38W, 98-7/16" 	<ul style="list-style-type: none"> 120: 120V 277: 277V 	<ul style="list-style-type: none"> Leave blank for Non-Dimming DIM: 10% Dimming (Requires interface, consult factory, not available for 20" lamp) EB: emergency ballast (60" lamp only, consult factory) 	<ul style="list-style-type: none"> SIN: single STA: starter ADD: adder TER: terminator 	<ul style="list-style-type: none"> CM48: cable mount 48" cable length CM96: cable mount 96" cable length CF: consult factory for custom length 	<ul style="list-style-type: none"> FW: fluoroscope white BL: black SL: silver PT: platinum BZ: Bronze CF: consult factory for custom color

**BT6300-20 and BT6300-34 available in single (SIN) configuration only.

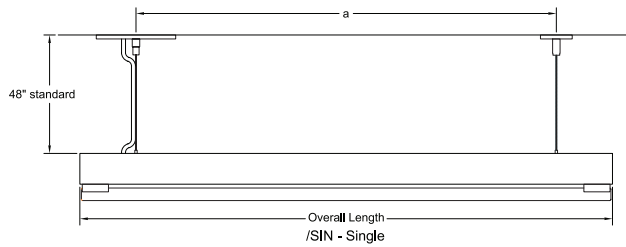
*Wattage rating for non-dimming ballast. When using dimming ballast, add one watt.

Profile

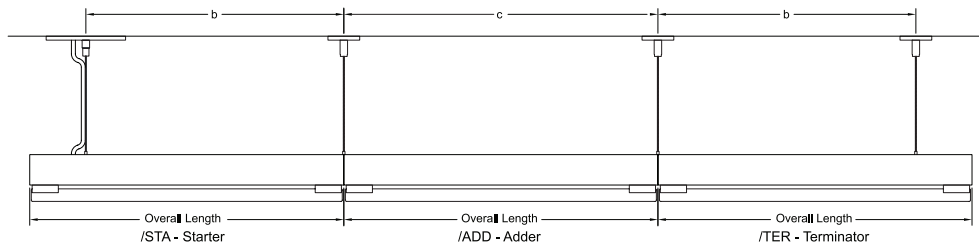
Side View



Single Fixture Configuration



Continuous Run Configuration

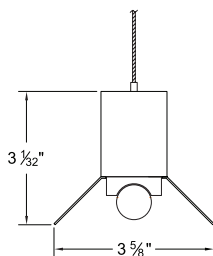


CABLE CENTER DIMENSIONS

model no.	overall length	/SIN - Dim. "a"	/STA - Dim. "b"	/ADD - Dim. "c"
BT6300-20	19-23/32"	12-3/4"	N/A	N/A
BT6300-34	33-1/2"	26-1/2"	N/A	N/A
BT6300-40	39-13/32"	32-1/2"	36"	39-13/32"
BT6300-50	49-7/32"	42-1/4"	45-3/4"	49-7/32"
BT6300-60	59-1/16"	52"	55-1/2"	59-1/16"
BT6300-4040	78-13/16"	71-3/4"	75-1/4"	78-13/16"
BT6300-5050	98-7/16"	91-1/2"	95"	98-7/16"

BT6300 | ACCESSORIES

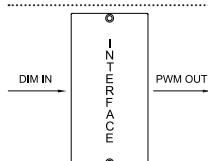
REFLECTORS | 20 ga. steel with white powder coat interior or .020" aluminum in specular (TR=95%) or semi-specular (TR=94%) interior finish



SPECIFICATIONS / ORDER FORMAT

model no.	reflector style	nominal length	interior finish	exterior finish
6300	-R1 - symmetrical	-20	/WH - white	/FW - fluoroscape white
		-34	/A1 - specular	/BL - black
		-40	/A2 - semi-specular	/SL - silver
		-50		/PT - platinum
		-60		/BZ - bronze
				/CU - custom finish (consult factory)

DIMMING INTERFACE | allows simple integration with common dimming control methods, 120V-277V input, surface mount aluminum enclosure (see interface cutsheet for complete specifications)



BT-AS-1	Astara PWM interface, 120V, single circuit, 25 fixtures max.
BT-AS-1-277	Astara PWM interface, 277V, single circuit, 25 fixtures max.
BT-AS-3	Astara PWM interface, 120V, three circuit, 60 fixtures max. (3x20 fixtures)
BT-AS-3-277	Astara PWM interface, 277V, three circuit, 60 fixtures max. (3x20 fixtures)