

DATE

JOB NAME

TYPE

Features

- Small profile providing continuous light
- Opal white acrylic lens, Clear prismatic #12 pattern acrylic lens
- Parabolic louver
- Wall Wash reflector
- MR16 option available
- Uses T8, T5, T5HO lamps or LED

Applications

- Office areas
- Perimeters
- retail Stores
- Corridors
- Class rooms
- Libraries

Series	Size	Lamps	Watts	Voltage	Mounting	Options
LSR4	2' (NOMINAL) 4' (NOMINAL) 6' (NOMINAL) 8' (NOMINAL)	1 2	17W T8 14W T5 24W T5HO 32W T8 28W T5 54W T5HO 25W T8 (6' TANDEM) 21W T5 (6' TANDEM) 39W T5HO (6' TANDEM)	120 277 UNV	T-Lay-in for T-Bar F-Flange for sheet-rock NT-Trimless (spackle flange) TG- 9/16" Tegular	EM1-EM pack 1-lamp EM2-EM pack 2-lamp* DB-Dimming Ballast SC-Separate Circuit OP-Opal White acrylic lens PA-prismatic acrylic lens PL-parabolic louver WW—Wall Wash reflector MR16—MR16 AO—acrylic Overlay WH—6' Whips *not available for T5, T5HO

Ordering Example: LSR4-4FT-1-28WT5-NT-UNV-PA

Details

Application Features: premium grade, recessed, modular architectural luminaire with opal white acrylic lens, clear prismatic #12 pattern acrylic lens, parabolic louver or wall wash reflector. For use in indoor applications where a T8, T5, T5HO or LED luminaire with small profile providing continuous light is required. available as individual fixtures or with end and intermediate units for mounting in continuous rows. removing endplates allow for diagonally overlapping lamps providing uniform light without socket shadows. available in 2', 4', 6' and 8' nominal lengths. Mr16 optionally available.

Construction: Cold rolled 20 ga. steel housing with opal white acrylic lens, clear prismatic #12 pattern acrylic lens, parabolic louver or wall wash reflector. Shielding lays directly on fixture flange on two sides. Sufficient knock-outs provided for connections and through wiring.

Finish: Powder painted high reflectance white.

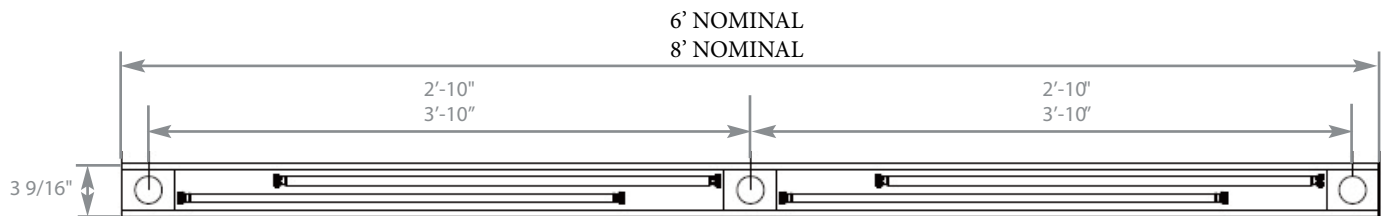
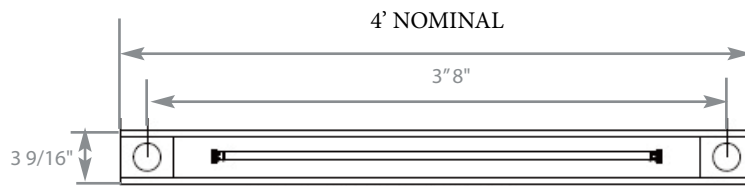
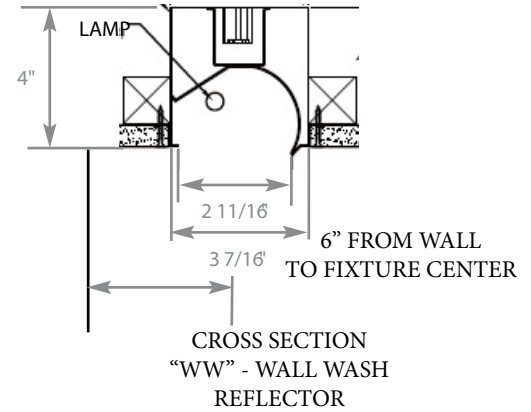
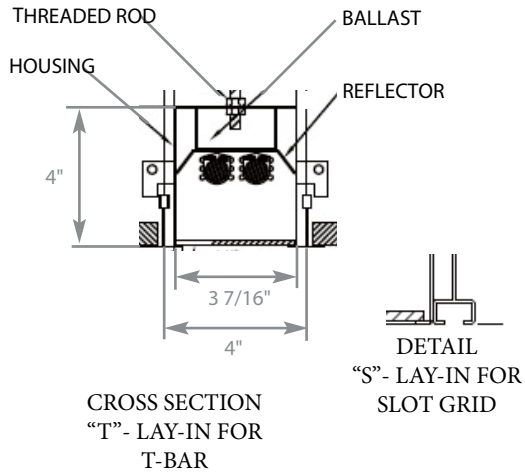
Electrical: Electronic ballasts are class p, thermally protected.

Approvals: Union made, UL listed, and manufactured in the US.

Mounting: recessed mounting for T-Bar, Slot Grid, with Flange for sheetrock ceiling installation or Trimless (spackle flange).

Optics: White reflector with Opal white acrylic lens, Clear prismatic #12 pattern extruded acrylic lens, parabolic louver or Wall Wash reflector.

Options: Emergency Battery Backup, Dimming Ballast, Separate Circuit, Opal White acrylic lens, prismatic acrylic lens, parabolic louver, Wall Wash reflector, Mr16, acrylic Overlay, 6' Whips.



TOP VIEWS WITH MR 16 OPTION
AVAILABLE WITH 1-LAMP OR 2-LAMP STAGGERED



(SHOWN FOR GRID INSTALLATION)