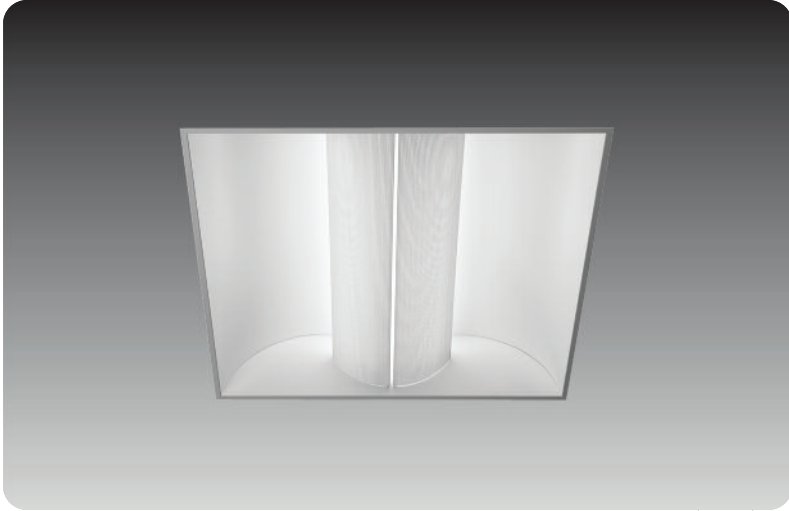


TDCS Series



Job Name:

Category Number:

Notes:

Type:

Application Features: Premium grade, recessed, high performance direct/indirect architectural luminaire with split perforated metal lamp shields. For use in indoor applications where a T8, T5, T5HO or Biax luminaire with soft low-glare illumination and modern styling is required. Available in 1x4, 2x2 and 2x4 configurations.

Construction: Die formed and spot welded, 20 ga. cold rolled steel housing with precision formed, cold rolled steel arched reflector and die formed, cold rolled steel perforated split shielding. Shielding flexes over mounting studs on housing for easy installation and re-lamping. Sufficient knockouts provided on back of housing for flexible conduit attachment.

Finish: Powder painted matte white.

Electrical: Electronic ballasts are class P, thermally protected..

Approvals: UL Listed for damp location.

Mounting: Recessed mounting for T-Bar, Slot Grid or with Flange Kit for sheetrock ceiling installations.

Optics: Arched reflector and perforated split lamp shield with opal white acrylic overlay.

Options: Emergency Battery Backup, Dimming Ballast, Separate Circuit, Air Supply/Return Stots, 6' Whips.

Features:

- Single perforated metal split lamp shield
- Translucent, opal white acrylic overlay
- Clean appearance, no exposed fasteners
- Uses T8, T5, T5HO or Biax lamps

Applications:

- Office Areas
- Retail Stores
- Class Rooms
- Corridors

TDCS Series

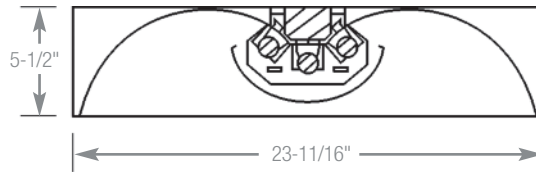
Size	Lamps	Watts	Mounting	Voltage	Options
1 x 4	2 4 (BX only)	32W T8 40W, 50W, 55W Biax 28W T5, 54W 2T5HO			EM1—EM Pack 1-Lamp (specify voltage) EM2—EM Pack 2-Lamp (specify voltage)* DB—Dimming Ballast SC—Separate Circuit AR—Air Return WH—Whips *not available for T5, T5HO, Biax
2 x 2	1 2 3	17W T8 40W, 50W, 55W Biax 14W T5, 24W T5HO	T—Lay-in for T-Bar S—Lay-in for Slot Grid F—Flange Kit for Sheetrock	120 277 UNV	
2 x 4	2 3 4, 6 (BX only)	32W T8 40W, 50W, 55W Biax 28W T5, 54W T5HO			

Ordering Example:

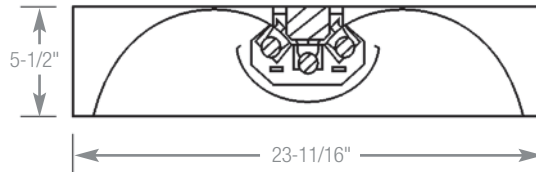
TDCS Series	24 Size	3 Lamps	32 Watts	T Mounting	277 Voltage	AR Options
-------------	---------	---------	----------	------------	-------------	------------

TDCS Series

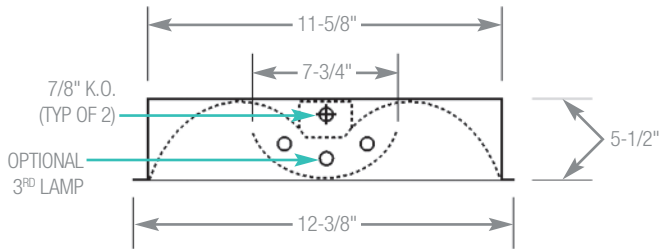
Model	Width	A
1 x 4	11-5/8"	47-3/4"
2 x 2	23-11/16"	23-11/16"
2 x 4	23-11/16"	47-3/4"



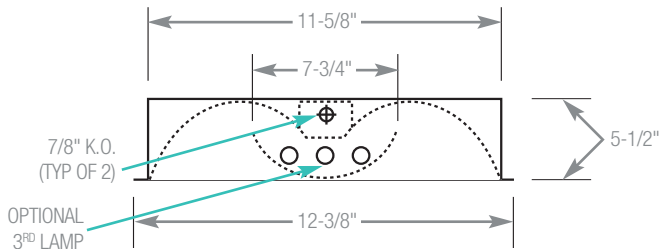
**CROSS SECTION
STATIC**



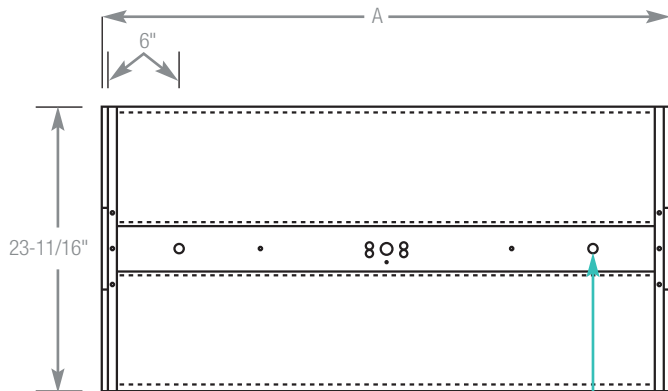
**CROSS SECTION
AIR SUPPLY / RETURN**



**CROSS SECTION
T5**

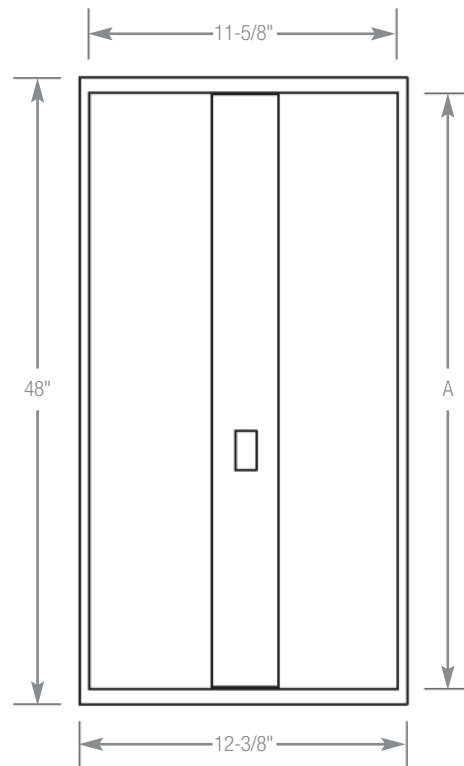


**CROSS SECTION
T8**



**TOP VIEW
2 X 2 - 2 X 4**

7/8" K.O.
(TYP OF 2)



**TOP VIEW
1 X 4**