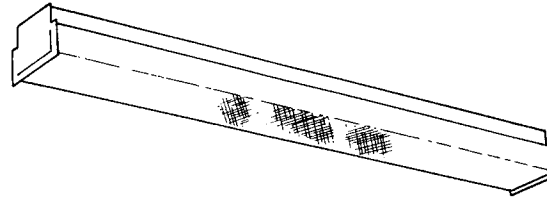


PHILIPS
Day-Brite
CFI

Linear

Slim Jim corridor wraparound

T5, T5HO, or T8



Project: _____
 Location: _____
 Cat.No: _____
 Type: _____
 Lamps: _____ Qty: _____
 Notes: _____

The Philips Day-Brite / Philips CFI Slim Jim corridor wraparound is a narrow wraparound luminaire with prismatic lens, ideal for corridor applications.

Ordering guide

Example: SJ232-UNV-1/2-EBLHE

Family	No. of Lamps per Cross Section	Lamp Type	Voltage	Options
<input type="text"/>	<input type="text"/>	<input type="text"/> -	<input type="text"/> -	<input type="text"/>
SJ Slim Jim	(not included)	14 14WT5 (22")	UNV Universal voltage	1/1 One 1-lamp ballast
TSJ Tandem (8')	1	17 17WT8 (24")	120/277V	1/2 One 2-lamp ballast
	2	24HO 24WT5HO (22")	120 120V	1/4 One 4-lamp ballast
		28 28WT5 (46")	277 277V	2/2 Two 2-lamp ballasts
		32 32WT8 (48")	347 347V	EB Electronic ballast, <10% THD
		54HO 54WT5HO (46")		EB10R T8 electronic ballast, program rapid start, <10% THD
				EBHE T8 electronic ballast, high efficiency, std. ballast factor
				EBLHE T8 electronic ballast, high efficiency, low ballast factor
				EBHHE T8 electronic ballast, high efficiency, high ballast factor
				LT20 -20°F start option (T8, use in conjunction with ballast option)
				EBSD T8 electronic step dimming ballast, .88 ballast factor
				EBD7 Advance Mark 7 dimming ballast, 0-10V (low voltage) control
				EBDX Advance Mark 10 dimming ballast, phase control
				EBD Electronic dimming ballast, customer specified
				E1 B100 emerg. ballast, T8, 350-450 lumens, 120/277V
				E1CAN B100-CAN emerg. ballast, Canada market, T8, 350-450 lumens, 120/347V
				E7 B60 emerg. ballast, T8, 600-700 lumens, 120/277V
				E5 B50 emerg. ballast, U.S. or Canada market, T8, 1100-1400 lumens, UNV
				E5CAN B50-CAN emerg. ballast, Canada market, T8, 1100-1400 lumens, 120/347V
				E5ST B50ST emerg. ballast w/self test, U.S. or Canada market, T8, 1100-1400 lumens, UNV
				E7LP LP550 emerg. ballast T5/T5HO, 430-700 lumens, 120/277V
				E6LP LP600 emerg. ballast U.S. or Canada market, T5/T5HO, 750-1325 lumens, 120/277V
				GLR Fusing, fast blow

Accessories (order separately)

- **CK-4** Closure band for continuous row mounting
- **FKR-126** Chain hanger set
- **TH-1** Sliding hanger, flush mounting
- **TH-2** Sliding hanger, 1-1/2" spacing
- **CTBH-1** T-bar sliding hanger, flush mounting
- **CTBH-2** T-bar sliding hanger, 1-1/2" spacing
- **TC-1** Heavy duty coupler
- **5988W/5977W** Hydee hangers
- **CS-400** Rigid canopy
- **CS-500** 42° top swivel canopy
- **CS-12** 12" Stem
- **CS-18** 18" Stem
- **CS-24** 24" Stem
- **CS-30** 30" Stem
- **CS-36** 36" Stem
- **CS-48** 48" Stem

Power Connect modular wiring available, see sheet 1604-OA for details



SJ Slim Jim corridor wraparound

T5, T5HO, or T8

Construction/Finish

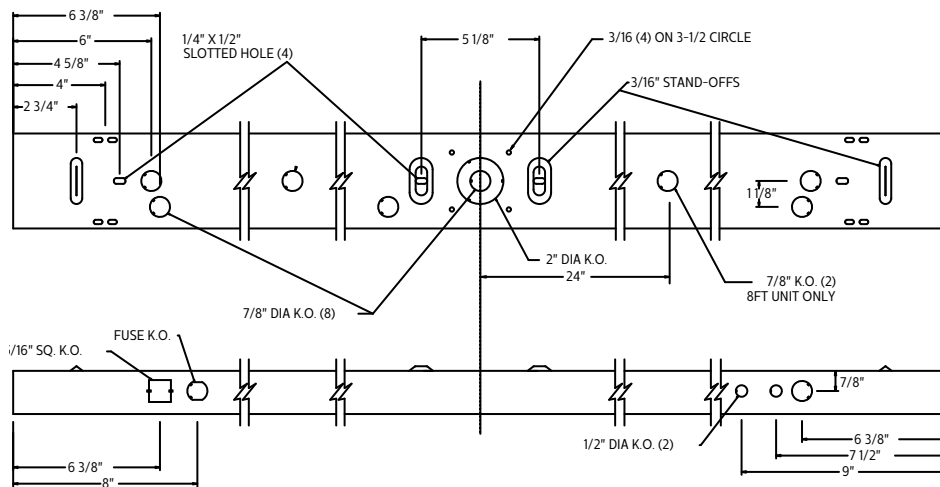
- Prismatic acrylic lens hinges from either side for easy maintenance. Straight sides eliminate dust build up.
- Housing is multi-stage phosphate treated for maximum corrosion resistance and finish coat is high reflectance baked white enamel.
- Economical alternative to wrap-around and strip luminaires.
- Heavy duty channel of code gauge die formed steel.
- White steel end caps.

Electrical

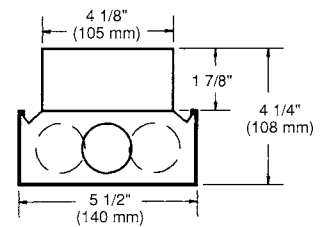
- cULus listed for direct mounting on low-density ceilings and damp locations.
- Lampholders snap into socket plates and may be individually replaced or rewired.
- Self-contained fluorescent emergency power packs can be incorporated.

Dimensions

NOTE: 2' & 3' MODELS INCLUDE ONLY OUTBOARD DETAILS



DIM "A"	
2' FIXTURE (610 mm)	24"
4' FIXTURE (1219 mm)	48"
8' FIXTURE (2438 mm)	96"



SJ Slim Jim corridor wraparound

T5, T5HO, or T8

Photometry

Slim Jim wraparound, 4' 1 Lamp 32W T8

Efficiency – 84.3%

LER – FW-72

Catalog No.	SJ132-1/1-EB	Candlepower				Light Distribution				Average Luminance				
		Angle	End	45	Cross	Degrees	Lumens	% Lamp	% Luminaire	Angle	End	45°	Cross	
Test No.	41969	0	595	595	595	0-30	499	17.2	20.4	45	2913	2956	2522	
S/MH	1.5	5	597	596	597	0-40	836	28.8	34.2	55	2149	2124	1713	
Lamp Type	F32T8	15	576	601	622	0-60	1400	48.3	57.3	65	1750	1671	1371	
Lumens/Lamp	2900	25	531	597	636	0-90	1838	63.4	75.2	75	1633	1546	1623	
Ballast Factor	1.00	35	463	551	584	90-180	606	20.9	24.8	85	1212	1797	2565	
Input Watts	34	45	351	437	442	0-180	2444	84.3	100.0					
<p>Comparative yearly lighting energy cost per 1000 lumens – \$3.33 based on 3000 hrs. and \$.08 pwr KWH.</p> <p>The photometric results were obtained in the Philips Day-Brite laboratory which is NVLAP accredited by the National Institute of Standards and Technology.</p>		Coefficients of Utilization												
		EFFECTIVE FLOOR CAVITY REFLECTANCE 20 PER (pfc=0.20)												
		pcc			80			70			50			
		pw			70			50			30			
		RCR												
		0	94	94	94	91	91	91	81	81				
		1	85	81	78	81	78	73	69	68				
		2	78	70	65	73	68	63	60	56				
		3	70	63	56	67	59	54	54	48				
		4	65	56	47	61	53	46	47	42				
		5	59	50	41	56	46	40	42	38				
		6	56	45	36	53	42	35	39	34				
		7	51	40	33	48	39	32	35	29				
		8	47	36	29	45	34	28	33	27				
		9	45	34	27	41	32	26	29	25				
		10	41	30	25	40	29	23	28	22				

Slim Jim wraparound, 4' 2 Lamp 32W T8

Efficiency – 78.6%

LER – FW-74

Catalog No.	SJ232-1/2-EB	Candlepower				Light Distribution				Average Luminance				
		Angle	End	45	Cross	Degrees	Lumens	% Lamp	% Luminaire	Angle	End	45°	Cross	
Test No.	41970	0	1236	1236	1236	0-30	1014	17.5	22.2	45	5918	5499	4640	
S/MH	1.4	5	1239	1239	1240	0-40	1666	28.7	36.6	55	4226	4149	3301	
Lamp Type	F32T8	15	1194	1240	1275	0-60	2741	47.3	60.1	65	3430	3334	2834	
Lumens/Lamp	2900	25	1095	1196	1253	0-90	3612	62.3	79.2	75	3062	3031	3432	
Ballast Factor	.92	35	943	1063	1098	90-180	947	16.3	20.8	85	2222	3519	5251	
Input Watts	56	45	713	813	813	0-180	4558	78.6	100.0					
<p>Comparative yearly lighting energy cost per 1000 lumens – \$3.24 based on 3000 hrs. and \$.08 pwr KWH.</p> <p>The photometric results were obtained in the Philips Day-Brite laboratory which is NVLAP accredited by the National Institute of Standards and Technology.</p>		Coefficients of Utilization												
		EFFECTIVE FLOOR CAVITY REFLECTANCE 20 PER (pfc=0.20)												
		pcc			80			70			50			
		pw			70			50			30			
		RCR												
		0	90	90	90	85	85	85	78	78				
		1	81	77	72	77	72	69	67	64				
		2	72	67	60	69	64	58	58	55				
		3	67	58	53	64	56	51	52	46				
		4	61	52	46	57	50	44	46	40				
		5	56	46	40	54	45	39	41	35				
		6	52	41	34	50	40	34	38	32				
		7	48	38	32	46	36	30	34	28				
		8	45	34	28	42	34	28	30	26				
		9	41	32	26	40	30	25	28	23				
		10	40	28	23	38	28	23	27	22				



Some luminaires use fluorescent or high intensity discharge (HID) lamps that contain small amounts of mercury. Such lamps are labeled, "Contain Mercury" and/or the symbol "HG". Lamps that contain mercury must be disposed of in accordance with local requirements. Information regarding lamp recycling and disposal can be found at www.lamprecycle.org

© 2015 Koninklijke Philips N.V. All rights reserved.
Philips reserves the right to make changes in specifications and/or to discontinue any product at any time without notice or obligation and will not be liable for any consequences resulting from the use of this publication.
philips.com/luminaires



Philips Lighting North America Corporation
200 Franklin Square Drive, Somerset, NJ 08873
Tel. 855-486-2216

Philips Lighting Canada Ltd.
A division of Philips Electronics Ltd.
281 Hillmount Rd, Markham, ON, Canada L6C 2S3
Tel. 800-668-9008