

SUPER BAFLUX® 226/8

recessed compact fluorescent downlight/wallwasher

COMPACT
FLUORESCENT
1-510

FEATURES

Super Baflux 226/8 is an efficient 8" aperture downlight, for use with two 26-watt compact fluorescent lamps. Its unique parabolic reflector and cross-baffle assembly provides precise optical control with very low aperture brightness. Shielding angles are 32° parallel to and 40° perpendicular to the lamps. Recess depth is only 4 3/4".

One housing allows interchangeable use of downlight and wallwash reflectors, permitting housings to be installed first and reflectors to be installed or changed at any time.


Super Baflux 226/8 uses two 26-watt, 4-pin lamps providing 3600 lumens (nearly as many as a 200-watt incandescent), a 10,000-hour life, a color rendering index (CRI) of 85, and color temperatures as warm as 2700°K (nearly duplicating the color qualities of incandescent).

Reflector assemblies are available in clear, natural aluminum in two finishes: **EvenTone**, our standard clear finish, partially diffuse, anti-iridescent and gently luminous in appearance; and **EasyTone**, diffuse and luminous. Additionally, reflectors are available in champagne gold, wheat, pewter, bronze, white and black. Wallwash reflectors are also available.

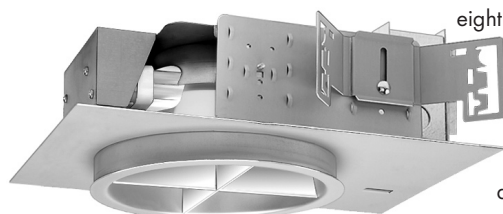
Super Baflux 226/8 includes a pair of mounting bars (3/4" x 27" C channel). Specialty bars for wood joist and T-bar installations are available as accessories.

APPLICATIONS

Fixture is recommended for downlighting or wallwashing in nearly all architectural environments, especially those spaces where non-directional luminaires are preferred over rectangular troffers. These include offices, lobbies, corridors, restrooms and public areas. The shallow recess depth allows mounting in constricted plenum situations.

Fixture is  listed for Damp Location (may not be suitable for some outdoor environments). Fixture is prewired with high power factor Class P electronic ballast, suitable for use in a fire rated ceiling and approved for

eight #12 wire 75°C branch circuit pull-through wiring. Removal of the reflector allows access to the ballast and junction box.



MODIFICATIONS AVAILABLE

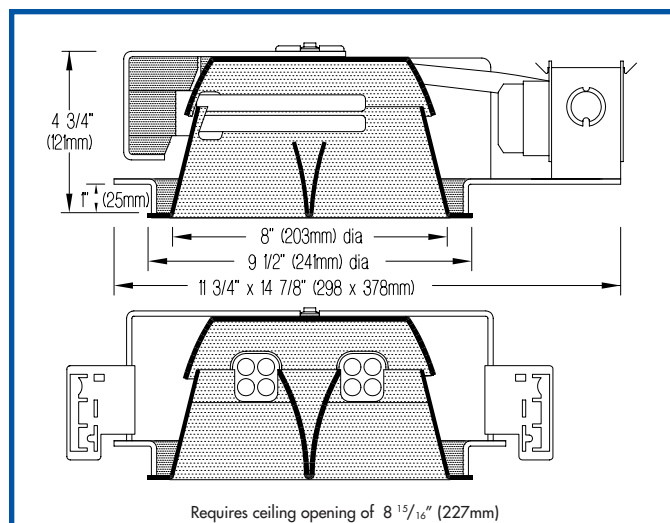
Contact factory with quantity for pricing; orders may require shop drawing approval.

CHP-: fixture suitable for **Chicago Plenum**; add CHP- as prefix to Product Code.

CONC-: fixture suitable for poured-in-place **concrete**; add CONC- as prefix to Product Code.

EXP-: 'European-style' **install-from-below** fixture; add EXP- as prefix to Product Code.

+2"CLG: fixture suitable for installation in **2" thick ceiling** material; add +2"CLG to Product Code.



In inaccessible ceilings, a total depth of 5 3/4" (146mm) is required to allow ballast removal.

PRODUCT CODE

For complete product code, list basic unit and select one item from each following box.

Basic UnitSBFX 226/8

Reflector Type

Downlight no suffix Wallwash WW

Voltage

120 volt service 120 277 volt service 277

Reflector and Flange Color

EvenTone Clear VOL
EasyTone Clear ECOL
Champagne Gold GOL
Wheat WHOL
Pewter POL
Bronze ZOL
White WOL
Black BOL

Other reflector finishes are available on special order.

Standard reflector flange continues reflector finish. White painted flanges and custom painted flanges are available on special order. Add WF (white flange) or CCF (custom color flange).

► Flush trim (FL) available on special order. Contact factory.

OPTIONS

Specify by adding to the basic unit.

Dimmable 3-wire ballast - DM

Emergency battery pack operates lamp in event of power outage. Fixture footprint increases to 11 3/4" x 17 5/8" (298 x 448mm). An additional 3 1/2" (89mm) is required to remove EM pack through aperture.

No through wiring. Not for outdoor application - EM

1/8" (3mm) thick **prismatic acrylic lens** within reflector - P

1/8" (3mm) thick **diffuse white acrylic** within reflector - D

1/8" (3mm) thick **clear acrylic shield** within reflector - PS

► For combinations of the Options above, contact factory or Edison Price Lighting representative.

► A modified fixture suitable for 347-volt service is available on special order. Contact factory.



SUPER BAFLUX 226/8



PHOTOMETRIC REPORT

Report No. 39126. Original Independent Testing Laboratories, Inc. (ITI) test report furnished upon request.

Luminaire recessed compact fluorescent downlight with white top reflector;
semi-specular formed main reflector, semi-specular parabolic cross-baffle
Lamps..... two 26-watt double-tube, 4-pin, G24q-3 base, 1800 lumens each
Efficiency 47.5%
Spacing Criteria 0°-1.2, 90°-1.2, 180°-1.3

ZONAL LUMEN SUMMARY

Zone	Lumens	% Lamp	% Fixture
0 - 30°	886	24.6	51.8
0 - 40°	1366	37.9	79.9
0 - 60°	1708	47.4	100.0
0 - 90°	1709	47.5	100.0
90 -180°	0	0.0	0.0
0 -180°	1709	47.5	100.0

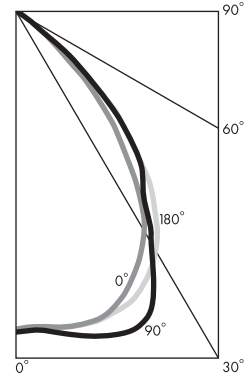
LUMINANCE DATA (Candela/m²)

Vertical Angle	Average 0° Longitude	Average 90° Longitude	Average 180° Longitude
45	13165	18095	19270
55	1020	1343	4570
65	0	0	0
75	0	0	0
85	0	0	0

To convert cd/m² to footlamberts, multiply by 0.2919.

CANDLEPOWER DISTRIBUTION (Candela)

Vertical Angle	Horizontal Angle				
	0.0	45.0	90.0	135.0	180.0
0	1055	1055	1055	1055	1055
5	1060	1060	1060	1057	1053
15	1055	1075	1110	1105	1059
25	938	1021	1064	1086	997
35	686	743	733	862	799
45	302	305	415	415	442
55	19	37	25	67	85
65	0	0	0	0	0
75	0	0	0	0	0
85	0	0	0	0	0
90	0	0	0	0	0



COLOR MULTIPLIERS

EvenTone (V)	.95
EasyTone (EC)	.88
Champagne Gold (G)	.97
Wheat (WH)	.79
Pewter (P)	.81
Bronze (Z)	.58

BALLAST INFORMATION

Voltage	120	277
Input Watts	54	59
Line Current (A)	.45	.22
Power Factor (%)	>99	>99
Min. Starting Temp* (°F)	0	0

*Consult lamp manufacturers for specific temperatures.

COEFFICIENTS OF UTILIZATION – ZONAL CAVITY METHOD

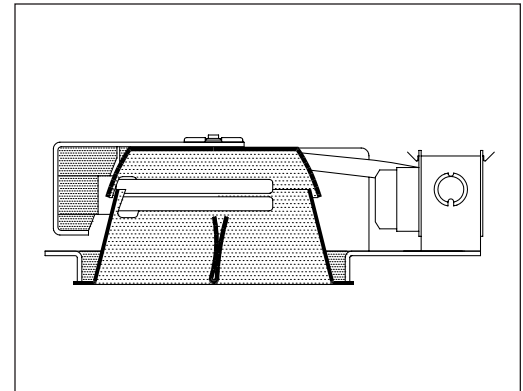
Effective Floor Cavity Reflectance 20%

Ceiling Reflectance (%)	80				70				50				30				10				0
Wall Reflectance (%)	70	50	30	10	70	50	30	10	50	30	10	50	30	10	50	30	10	50	30	10	0
Room Cavity Ratio																					
0	57	57	57	57	55	55	55	55	53	53	53	51	51	51	48	48	48	48	48	48	
1	54	52	51	50	52	51	50	49	49	48	47	47	47	46	46	45	45	44	44	44	
2	50	48	46	44	49	47	45	43	45	44	42	44	43	41	43	42	41	40	40	40	
3	47	44	41	39	46	43	41	39	42	40	38	41	39	38	40	38	37	36	36	36	
4	44	40	37	35	44	40	37	35	39	36	34	38	36	34	37	35	34	33	33	33	
5	42	37	34	32	41	37	34	32	36	33	31	35	33	31	34	32	31	30	30	30	
6	39	34	31	29	38	34	31	29	33	30	28	32	30	28	32	30	28	27	27	27	
7	37	32	29	26	36	31	28	26	31	28	26	30	28	26	30	27	26	25	25	25	
8	35	29	26	24	34	29	26	24	29	26	24	28	26	24	28	25	24	23	23	23	
9	33	27	24	22	32	27	24	22	27	24	22	26	24	22	26	23	22	21	21	21	
10	31	26	22	20	30	25	22	20	25	22	20	25	22	20	24	22	20	19	19	19	

SUPER BAFLUX 226/8 WW

WALLWASH INFORMATION

Distance From Ceiling (Feet)	2'6" From Wall; 2'6" O.C.		3' From Wall; 3' O.C.		4' From Wall; 3'6" O.C.	
	Below Fixture	Between Fixtures	Below Fixture	Between Fixtures	Below Fixture	Between Fixture
1	13	12	8	6	4	3
2	26	27	15	15	7	7
3	31	35	21	23	11	12
4	30	32	21	24	14	15
5	26	26	21	22	14	16
6	21	21	19	18	14	15
7	17	16	16	15	14	13
8	13	13	13	12	12	12
9	10	10	10	10	11	10
10	8	8	8	8	9	9
11	7	6	7	7	8	8
12	5	5	6	6	6	6



All vertical footcandles are initial values with no contribution from ceiling or floor reflectances. Computation performed with a total of five wallwashers.