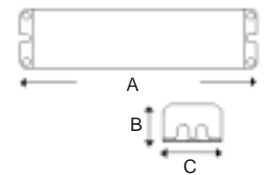


Catalog Number	
Notes	Type



EMG SERIES

*Fluorescent Emergency Battery Pack
Emergency Lighting*



	A	B	C
EP500	9.5	2.375	1.5
EP700-8			

EP1350	13.125	2.375	1.5
EP1500	9.5	2.375	1.5
EP2200			
EP94			

EP28	14.2	1.118	1.15
EP54	17.5	1.118	1.15

ENERGY DATA

Item	Watts
EP500	3.5
EP700-8	3.5
EP1350	3.5
EP1500	3.5
EP2200	3.5
EP94	3.5
EP28	2.5
EP54	2.5

Description:

The EnCore emergency battery pack is designed to fit inside most linear fluorescent fixtures, or onto recessed downlight frame kits. In the event of AC power failure, the EnCore EP automatically switches to emergency mode. The Emergency Ballast will operate 1 or 2 lamps, at various lumen output levels, for a minimum of 90 minutes. UL listed for field installation as per UL924 standards.

Electrical:

- Dual voltage input, 120/277 VAC, 60 Hz.
- Constant current type charger.
- Test switch and visual AC/Charge indicator included.

- Solid state short circuit and overload protection.

Housing:

- 18 gauge die formed steel ballast housing, factory sealed.
- Options available for surface/remote mounting of emergency ballast.

Battery:

- Sealed Nickel Cadmium.
- Maintenance-free, long life, suitable for high temperature environments.
- Fully discharged battery will recharge completely in less than 24 hours.

Performance Features:

- Provides emergency output upon AC utility failure.
- Encore Emergency ballasts are compatible with 1 lamp through 4 lamp ballasts in normal AC operation.
- In emergency mode, Encore Emergency ballasts will operate 1 or 2 lamps depending on model number, consult ordering chart below.

- Provides a minimum of 90 minutes of emergency operation.
- Emergency lumen output varies from 500 lumens to 1400 lumens, rated for 90 minutes output.
- Emergency ballast can be mounted inside or on top of fixture, when mounting on top of fixture, utilize the "EFC" option.
- Encore Emergency Ballasts can be used in switched or unswitched applications.
- Encore Emergency Ballasts are compatible with nearly all AC ballast types including standard, rapid start, slimline, instant start, energy saving, dimming, and electronic types. Wiring diagrams available upon request, consult factory.

Listing/Code Compliance:

- UL 924 listed
- UL listed for retrofit field installation.
- NEC/OSHA, Life Safety NFPA 101.

Warranty:

- Full 5 year warranty on charger board and Nicad batteries against defects in workmanship and materials.

Series	Lamp Type	# Lamps Emergency Mode	Initial Lumens
EP500	T8/T12 2'-4' 20W-40W	1	500
EP700-8	T8/T12/BiAx 2'-8' 20W-215W	1 (2'-8') 2 (2'-4')	700
EP1350	T8/T12/BiAx 2'-8'	1 (2'-8') 2 (2'-4')	1400
EP13	PL7/9/13 2 pin Twin Tube	1	650
EP2200	18/26 W 2 pin Quad	1	650
EP94	10-42W 4 pin Quad/Triple	1 (10-42W) 2 (10-26W)	650
EP28	2'-4' T5 or T8	1	500
EP54	2'-4' T5/T5HO/T8	1	825

Options: FK6 Remote Wire Covers
RTS Remote Test Switch

