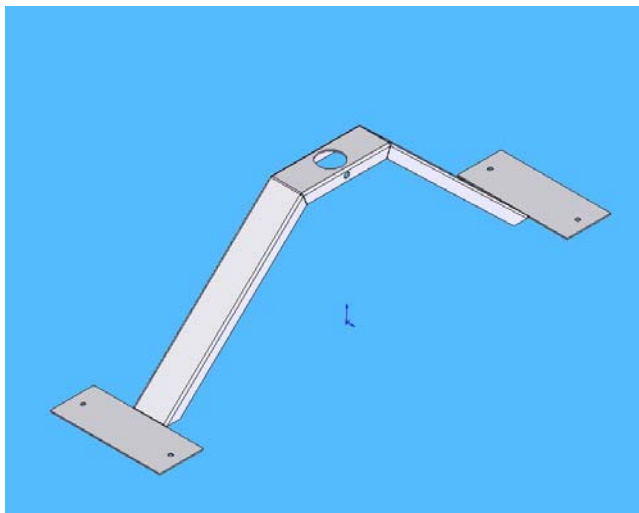


ENVIROBRITE

Stability Bracket



Standard Applications

- To improve stability of pendant mounted fixtures
- Can be mounted to most fixtures
- Creates four points of contact

Features

- Locking screw at top of bracket for added stability
- Wide foot print to reduce rocking
- Meyers hub included (1/2" IPS)
- Durable steel construction