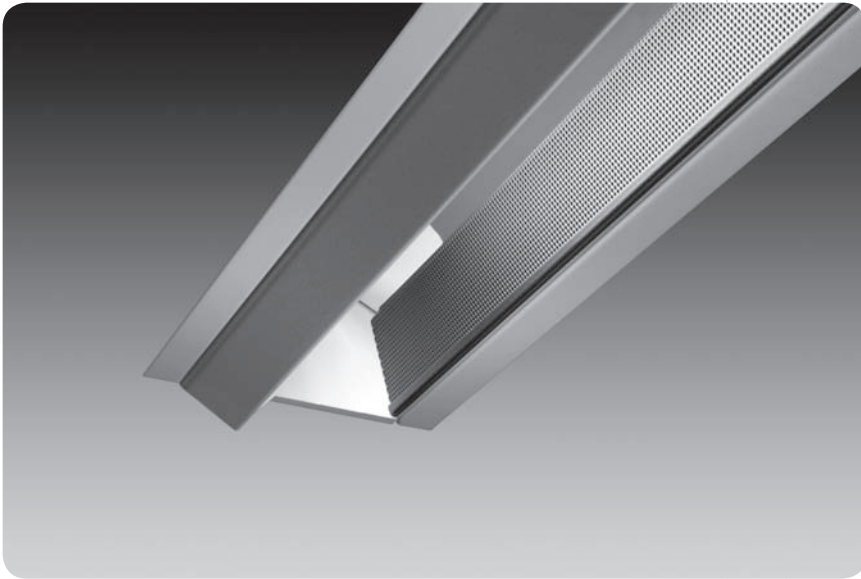


avenue[®] a



features

Narrow aperture high performance T5/T5HO asymmetric wall wash.

Precision micro-optic delivers shadow free illumination from the ceiling to the floor.

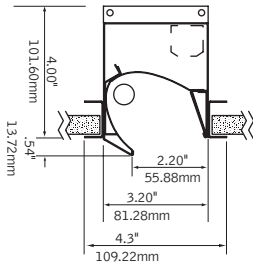
Features 2" narrow aperture for clean unobtrusive aesthetic.

Drywall installation is available, which allows for both individual or continuous row mount capability.

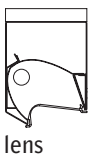
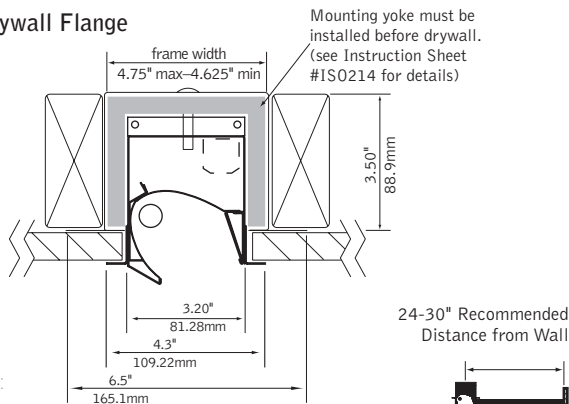
Great solution for conference rooms, highlighting artwork, corridors, white board or any application that requires high levels of vertical illumination.

dimensional data

Grid Mount

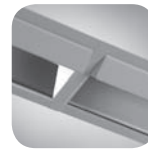


Drywall Flange

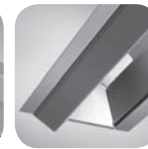


detail

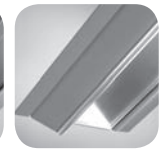
shielding options



drywall row mount



open optic

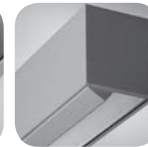


clear lens

companion luminaire



mr16



linear



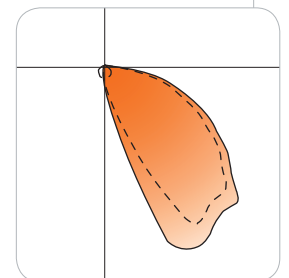
recessed wall mount

performance

1-Lamp T5HO
57% Efficiency
1933 cd @ 25°



Use in place of multiple halogen or compact fluorescent wall washers.



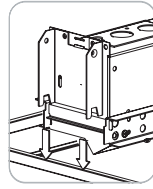
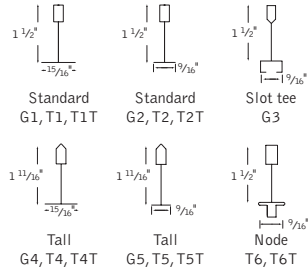
Visit focalpointlights.com for complete photometric data.

fixture:

project:

mounting information

grid



lay-in tile

tegular tile

drywall

2' unit (cutout dimension: 3.5" x 23.6")

3' unit (cutout dimension: 3.5" x 35.6")

4' unit (cutout dimension: 3.5" x 47.6")

5' unit (cutout dimension: 3.5" x 59.6")

Drywall flange version provided with mounting yoke.

specifications

construction

One-piece 20 Ga. steel housing.

Grid luminaires include 20 Ga. steel, .5" wide universal flange rail.

Drywall flange option is provided with 20 Ga. steel, .5" wide flange kit and 20 Ga. galvanized steel mounting yoke.

2' unit weight: 5 lbs.

3' unit weight: 6 lbs.

4' unit weight: 7 lbs.

5' unit weight: 8 lbs.

optic

.020" specular aluminum upper reflector and .020" semi-specular lower reflector.

24 Ga. perforated matte black diffuser with 24% opening.

please note:

radial cut-off louver FAVA-RL cannot be field installed on the non-shielded profile FAVA-NS.

electrical

Luminaires are individually wired for specified circuits.

Thru-wiring not available.

Electronic ballasts are thermally protected and have a Class "P" rating.

Optional dimming ballasts available.

Consult factory for dimming specifications and availability.

UL and cUL listed.

finish

Polyester powder coat applied over a 5-stage pre-treatment.

Perforated diffuser always finished in Matte Black.

ordering

luminaire series

Avenue A FAVA

FAVA

NS

CL

No Shielding, Open Optic
Snap-on Clear Lens
(Radial cut-off louver FAVA-RL cannot be field installed on the FAVA-NS or FAVA-CL)

lampping

One Lamp T5 1T5

One Lamp T5H0 1T5H0

circuits

Single Circuit 1C

voltage

120 Volt 120

277 Volt 277

347 Volt 347

ballast

Electronic Program Start <10% THD S

Electronic Dimming Ballast* D

ceiling configurations*

Drywall Flange F
(Consult factory for custom variations)

	Std. 15/16" Lay-in	G1
	Std. 15/16" Tegular	T1
	Std. 15/16" Tegular, against Tee	T1T
	Std. 9/16" Lay-in	G2
	Std. 9/16" Tegular	T2
	Std. 9/16" Tegular, against Tee	T2T
	9/16" Slot-tee Tegular	G3
	Tall 15/16" Lay-in	G4
	Tall 15/16" Tegular	T4
	Tall 15/16" Tegular, against Tee	T4T
	Tall 9/16" Lay-in	G5
	Tall 9/16" Tegular	T5
	Tall 9/16" Tegular, against Tee	T5T
	Node 9/16" Tegular	T6
	Node 9/16" Tegular, against Tee	T6T

factory options

Chicago Plenum CP

Emergency Battery Pack* EM
(3' & 4' Luminaires Only)

Earthquake Clips EQ

HLR/GLR Fuse FU

Include 3000K Lamp L830

Include 3500K Lamp L835

Include 4100K Lamp L841

Lutron™ Sensor Feed* SF
(EcoSystem ballast required)

finish

Matte White Housing WH

Titanium Silver TS

Matte Black Housing BK

(Perforated diffuser always painted black)

luminaire length

2' Nominal Housing 2'

3' Nominal Housing 3'

4' Nominal Housing 4'

5' Nominal Housing 5'

(Dimming not available with 5' lamps)

(For continuous row mount in drywall ceiling, specify luminaire run length, ie 24')

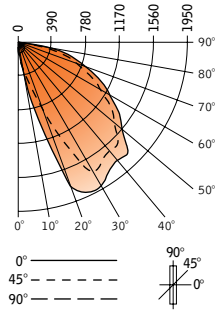
* for more information see Reference section.

avenue® a



Filename: FAVANS1T5H.IES
 Catalog #: FAVA-NS-1T5H0-1C-120-S-G-WH-4'
 Efficiency: 57%
 Test #: 12355.0

CANDLEPOWER DISTRIBUTION



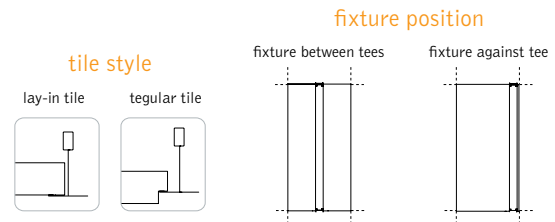
Vertical Angle	Horizontal Angle				Zonal Lumens
	0°	22.5°	45°	67.5°	
0°	108	108	108	108	108
5°	276	256	214	154	101
15°	919	771	499	291	102
25°	1933	1873	1300	415	101
35°	1832	1799	1695	707	96
45°	1806	1775	1647	1296	88
55°	1434	1416	1329	1108	74
65°	1072	1052	962	811	56
75°	655	631	568	458	39
85°	317	294	224	129	14
90°	183	165	112	40	2
95°	0	0	0	0	0
105°	0	0	0	0	0
115°	0	0	0	0	0
125°	0	0	0	0	0
135°	0	0	0	0	0
145°	0	0	0	0	0
155°	0	0	0	0	0
165°	0	0	0	0	0
175°	0	0	0	0	0
180°	0	0	0	0	0

LUMEN SUMMARY

Zone	Lumens	% Lamp	% Fixt	
0°-30°	376	7.5	13.2	
0°-40°	784	15.7	27.4	
0°-60°	1975	39.5	69.0	
0°-90°	2861	57.2	100.0	
Total Luminaire	0°-180°	2861	57.2	100.0

avenue a grid ceiling configurations

Avenue A is configured at our factory to integrate easily with your specified grid type, tile style and fixture position. Please review the below options and choose the mounting code that matches your application.



1 1/2"

15/16"

Standard 15/16"

G1
lay-in tile,
any fixture placement

T1
tegular tile,
fixture between tees

T1T
tegular tile,
fixture against tee

1 1/2"

9/16"

Standard 9/16"

G2
lay-in tile,
any fixture placement

T2
tegular tile,
fixture between tees

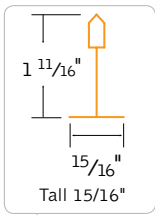
T2T
tegular tile,
fixture against tee

1 3/4" 1 1/2"

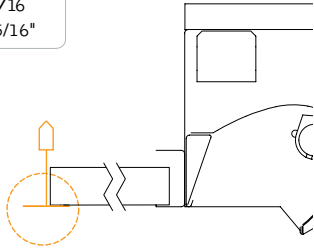
9/16"

Slot Tee 9/16"

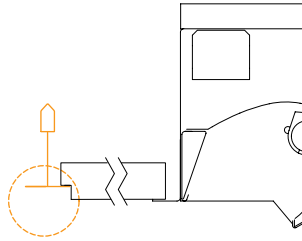
G3
slot-tee tegular tile,
any fixture placement



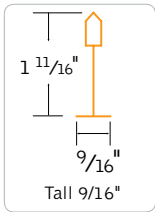
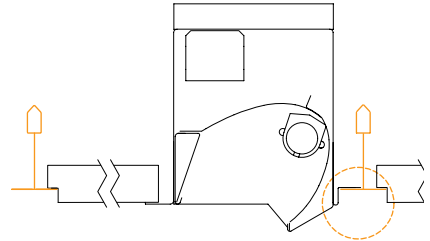
G4
lay-in tile,
any fixture placement



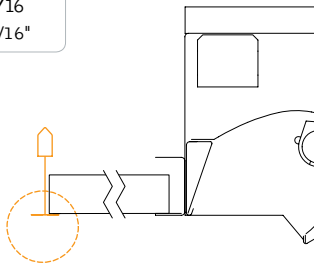
T4
tegular tile,
fixture between tees



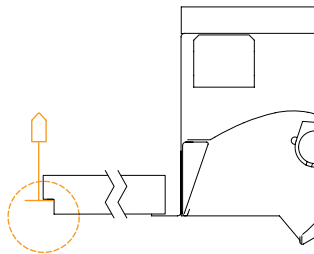
T4T
tegular tile,
fixture against tee



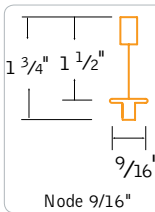
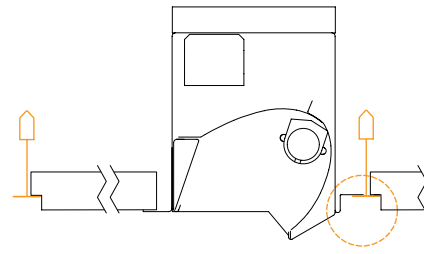
G5
lay-in tile,
any fixture placement



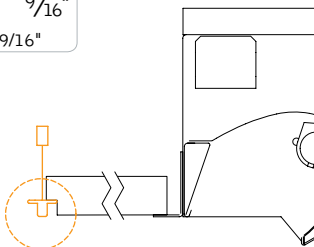
T5
tegular tile,
fixture between tees



T5T
tegular tile,
fixture against tee



T6
tegular tile,
fixture between tees



T6T
tegular tile,
fixture against tee

