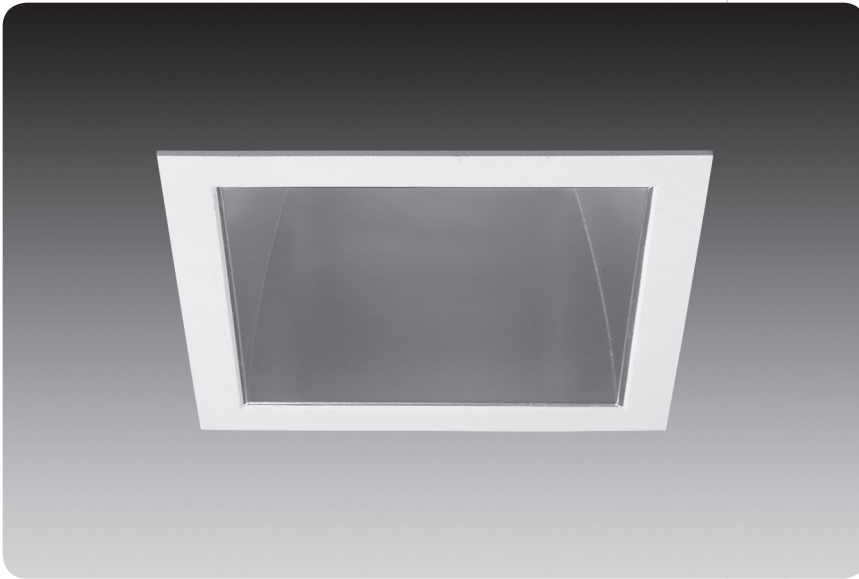


4.5" x 4.5" – downlight

id®



CFL



Patent Pending

### features

Overlap trim features:

- One piece die-cast construction creates seamless integration with reflector eliminating mitered corners.
- Die-cast flange maintains tight fit of reflector corners.
- **SmartLock™** clip allows for quick removal and re-assembly of trim components for field painting.

Flush trim features:

- Minimal .225" thick self flanged trim integrates seamlessly into drywall ceilings.
- Flush flange requires no field painting.

Centered optics achieved with **CenterLock™** die-cast socket cup which locates and locks 18, 26 or 32 watt lamp in center of aperture.

**LampAlign™** allows installation of upper reflector in any direction regardless of housing direction. Lamps are aligned for consistent appearance and light distribution.

Reflector design eliminates tabs in corners for a seamless, no light leaks look.

1" tall housing collar rotates up to 90°.

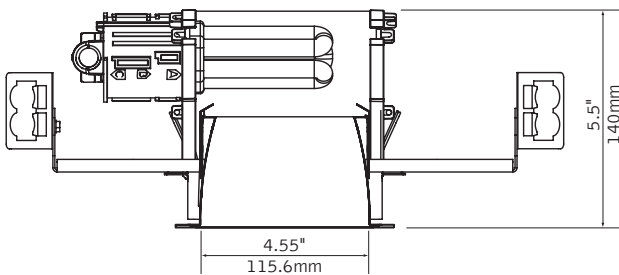
55-degree cut-off to lamp and its image.

### lens option

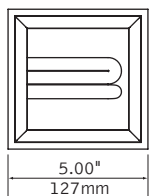


MicroGlow

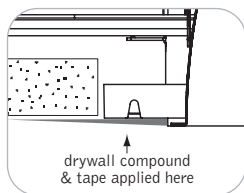
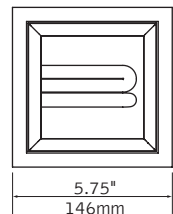
### dimensional data



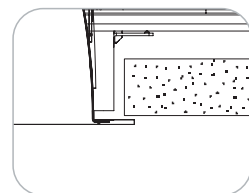
### flush trim



### overlap trim

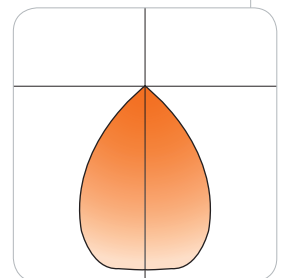


drywall compound & tape applied here



### performance

- 1-Lamp 32W Triple Tube
- Downlight Optic, Clear Diffuse
- 45% Efficiency
- 761 cd @ 10°

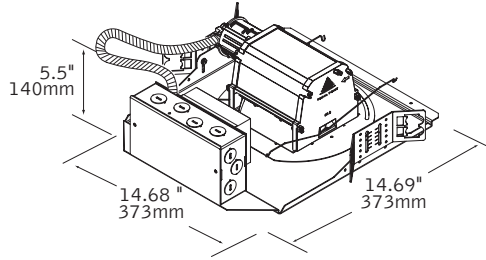


Visit [focalpointlights.com](http://focalpointlights.com) for complete photometric data.

fixture:  
project:

## details

### t-rated housing non-ic



## specifications

### housing

Frame features up to 90-degree locking adjustment of aperture after installation for parallel alignment to walls or adjacent fixtures.

Frame may be installed into ceiling thicknesses up to 1". For thicker ceiling consult factory.

Flex conduit with screw tight fittings mechanically fasten to CenterLock™ socket cup. CenterLock™ provides proper venting for lamps.

Butterfly brackets allow mounting to ½ emt. Order bar hangers as an accessory. Galvanized steel frame includes large Junction box 7" x 3.5" with (10) ½" pry outs. UL listed for through branch wiring, four #12 90°C conductors.

### upper reflector

Multi-faceted steel upper reflector mounts to die cast end caps and is finished in High Reflectance White powder coat. Adjustable socket cup allows 18, 26 and 32W lamps to be centered in the optic to maintain optimal performance.

### trim

Lower reflector provides 55-degree cut off to lamp and lamp image.

Parabolic aluminum fastens to die-cast flange on overlap trim. Flush trim option for drywall installations features a minimal reflector flange.

Trim attaches to upper reflector via torsion springs.

Consult factory for custom reflector finishes.

Upper reflector and lower reflector ship separately from housing frame to avoid construction abuse.

Optional .125" thick MicroGlow™ micro prism lens provides lamp obscuration.

### electrical

Luminaires are pre-wired for single circuit with thermally protected Class "P" program start <10% THD electronic ballast.

Consult factory for dimming specifications and availability.

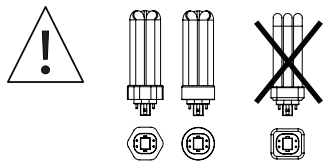
UL Listed.

Integral emergency battery test switch and indicator light in optic.

Rotary lock socket allows for easy lamp removal and reduces lamp breakage.

One lamp triple tube compact fluorescent, 4-pin, 18W-(GX24q-2), 26W/32W-(GX24q-3/4). OSI and GE lamps only.

### finish



Trim flange, end caps and upper reflector finished in polyester powder coat over a 5-stage pre-treatment.

## housing ordering

<b>housing series</b>	<b>FC44</b>
ID CFL Square Housing	FC44
<b>lamp</b> (OSI & GE lamps only)	
18W Triple Tube, GX24q-2	18TT
26W Triple Tube, GX24q-3 (Includes wattage restriction label)	26TT
32W Triple Tube, GX24q-3	32TT
<b>ballast</b>	
Electronic Program Start <10% THD	S
Electronic Dimming Ballast*	D
<b>voltage</b>	
120V	120
277V	277
347V	347
<b>faceplate type</b>	
Square Flush	SF
Square Overlap	SO
<b>housing type</b>	<b>T</b>
Thermally Protected, Non-IC	T
<b>factory options</b>	
Chicago Plenum	CP
Emergency Battery Pack*	EM
HLR/GLR Fuse	FU
Include 3000K Lamp	L830
Include 3500K Lamp	L835
Include 4100K Lamp	L841

## trim ordering

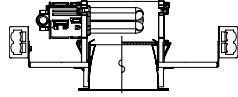
<b>trim aperture</b>	<b>D44</b>
4.5" Square Aperture	D44
<b>faceplate type</b>	
Square Flush	SF
Square Overlap	SO
<b>optic</b>	
Downlight	DN
Regress MicroGlow Lens	RLMG
<b>color</b>	
Clear Specular	CS
Clear Diffuse	CD
Warm Diffuse	WD
Silver Talc Diffuse	TD
<b>flange finish</b> (for SO option only)	
White	WH
Black	BK
Titanium Silver	TS
Aluminum Raw	AL

a complete unit consists of two line items, housing and trim  
example: FC44-32TT-S-120-SO-T  
D44-SO-DN-CD-WH

\* for more information see Reference section.

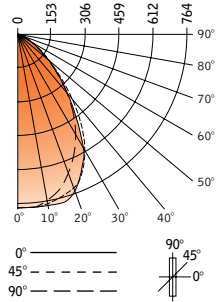
# 4.5"x4.5" – downlight

id®



Filename: D44DNCS32TT.IES  
 Catalog #: FC44-32TT-U-SO-T, D44-SO-DN-CS-WH  
 Efficiency: 45%  
 Photometric Report #: 13971.0

## CANDLEPOWER DISTRIBUTION



Vertical Angle	Horizontal Angle				Zonal Lumens
	0°	22.5°	45°	67.5°	
0°	760	760	760	760	760
5°	761	760	763	764	763
15°	699	711	735	759	761
25°	569	604	660	647	646
35°	403	456	463	422	410
45°	224	233	217	236	231
55°	52	69	62	58	49
65°	9	8	9	9	9
75°	3	2	3	2	3
85°	0	0	0	0	0
90°	0	0	0	0	0

Spacing Criteria  
 End: 1.0  
 Cross: 1.1

## LUMEN SUMMARY

Zone	Lumens	% Lamp	% Fixt
0°-30°	572	23.8	52.6
0°-40°	847	35.3	77.8
0°-60°	1077	44.9	99
0°-90°	1089	45.4	100
<b>Total Luminaire</b>	<b>0°-180° 1089</b>	<b>45.4</b>	<b>100</b>

## LUMINANCE DATA (CD/M<sup>2</sup>)

Vertical Angle	Horizontal Angle		
	0°	45°	90°
45°	24062	23310	24814
55°	6886	8210	6489
65°	1618	1618	1618
75°	880	880	880
85°	0	0	0

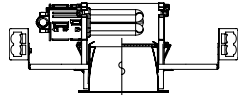
## CO-EFFICIENTS OF UTILIZATION

Floor	80			70			50			30			10			00		
Ceiling	70	50	30	10	70	50	30	10	50	10	50	10	50	10	00	70	50	30
Wall	54	54	54	54	53	53	53	50	50	48	48	46	46	45	45	44	44	43
RCR	0	54	54	54	54	53	53	50	50	48	48	46	46	45	45	44	44	43
1	51	50	49	48	50	49	47	47	45	45	44	44	43	42	42	41	41	39
2	49	46	44	43	48	45	42	44	41	43	40	41	39	39	39	37	37	35
3	46	43	40	38	45	42	38	41	37	40	37	39	36	35	35	34	34	32
4	43	39	37	34	42	39	34	38	34	37	33	36	33	32	32	31	31	29
5	40	36	33	31	40	36	31	35	31	34	30	33	30	29	29	28	28	27
6	38	34	31	28	37	33	28	32	28	32	28	31	28	27	27	26	26	25
7	36	31	28	26	35	31	26	30	26	29	25	29	25	25	25	24	24	23
8	33	28	25	23	33	28	23	28	23	27	23	27	23	22	22	21	21	20
9	31	26	23	21	30	26	21	25	21	25	21	24	20	20	20	19	19	18
10	29	24	21	19	28	24	19	23	19	23	19	22	19	18	18	17	17	16

Go to [www.focalpointlights.com](http://www.focalpointlights.com) for additional photometric data.

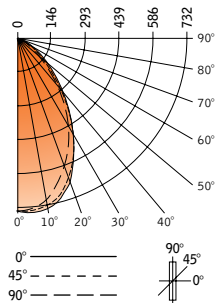
# 4.5"x4.5" – downlight

id®



Filename: D44DNCD32TT.IES  
 Catalog #: FC44-32TT-S-SO-T, D44-SO-DN-CD-WH  
 Efficiency: 42%  
 Photometric Report #: 14182.0

## CANDLEPOWER DISTRIBUTION



Vertical Angle	Horizontal Angle				Zonal Lumens
	0°	22.5°	45°	67.5°	
0°	727	727	727	727	727
5°	717	722	726	729	732
15°	633	656	679	390	693
25°	497	523	549	552	544
35°	344	363	353	357	365
45°	203	192	181	207	221
55°	97	78	75	90	107
65°	44	33	28	38	48
75°	15	12	10	14	20
85°	4	3	2	3	5
90°	0	0	0	0	0

Spacing Criteria  
 End: 0.9  
 Cross: 1.0

## LUMEN SUMMARY

Zone	Lumens	% Lamp	% Fixt
0°-30°	508	21.2	50
0°-40°	732	30.5	72
0°-60°	936	40.1	94.7
0°-90°	1016	42.3	100
<b>Total Luminaire</b>	<b>0°-180° 1016</b>	<b>42.3</b>	<b>100</b>

## LUMINANCE DATA (CD/M<sup>2</sup>)

Vertical Angle	Horizontal Angle		
	0°	45°	90°
45°	21806	19443	23740
55°	12845	9932	14170
65°	7908	5032	8627
75°	4402	2935	5869
85°	3486	1743	4357

## CO-EFFICIENTS OF UTILIZATION

Floor	80			70			50			30			10			00		
Ceiling	70	50	30	10	70	50	30	10	50	10	50	10	50	10	00	70	50	30
Wall	50	50	50	50	49	49	49	47	47	45	45	43	43	42 <td>42</td> <td>41</td> <td>41</td> <td>39</td>	42	41	41	39
RCR	0	50	50	50	50	49	49	47	47	45	45	43	43	42 <td>42</td> <td>41</td> <td>41</td> <td>39</td>	42	41	41	39
1	48	46	45	44	47	45	46	44	42	42	41	41	39	39	39	37	37	35
2	45	42	40	39	44	42	38	40	37	39	37	38	36	35	35	34	34	32
3	43	39	36	35	47	38	34	37	34	36	33	35	33	32	32	31	31	29
4	39	36	33	31	39	35	31	34	30	33	30	33	30	29	29	28	28	27
5	37	33	30	28	36	32	28	31	27	31	27	30	27	26	26	25	25	24
6	35	30	27	25	34	30	25	29	25	29	25	28	25	24	24	23	23	22
7	32	28	25	23	32	28	23	27	23	26	22	26	22	22	22	21	21	20
8	30	25	26	21	30	25	20	25	20	24	20	24	20	19	19	18	18	17
9	28	23	20	18	28	23	18	23	18	22	18	22	18	17	17	16	16	15
10	26	21	19	17	26	21	17	21	17	21	17	20	16	16	16	15	15	14

Go to [www.focalpointlights.com](http://www.focalpointlights.com) for additional photometric data.