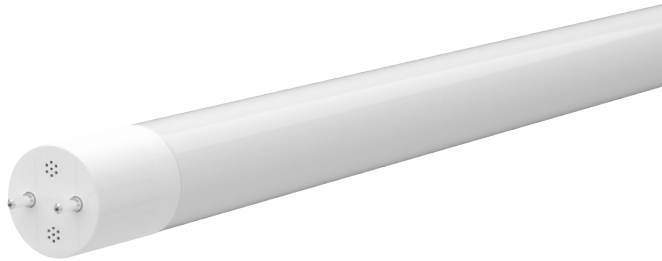


# Linear T8 Bypass Series



ProLED® Linear T8 Bypass LED retrofit tubes are the most reliable and efficient way to retrofit Fluorescent T8 fixtures. There are no ballasts involved, so there is less worry about failure of the lamps. With simple rewiring of any 4 foot T8 fixture, the lamp uses 53% less energy than a standard Fluorescent T8 and lasts up-to 66% longer.<sup>1</sup> This translates to lower maintenance costs over time. The frosted finish maintains the familiar look and feel of Fluorescent and can be used in a wider range of temperature applications.

<sup>1</sup>Energy savings based on \$0.11 kWh over 50,000 hour life

## Performance Specifications

<b>CRI</b> _____	82+	<b>Min. Start Temp.</b> _____	-4°F(-20°C)
<b>Rated Life</b> _____	50,000 hour life	<b>Max. Operating Temp.</b> _____	122°F(50°C)
<b>Watt</b> _____	15W	<b>Power Factor</b> _____	0.97
<b>Lumens</b> _____	1800	<b>THD</b> _____	<20%
<b>Lumens per Watt (LPW)</b> _____	120	<b>Warranty</b> _____	5-Year Limited
<b>Input Line Voltage</b> _____	120-277VAC	<b>Control</b> _____	Non-dimmable
		<b>Weight</b> _____	0.96 lbs.

## Energy Savings

Linear Fluorescent	Replacement LED	Wattage	Energy Savings
Standard 32W T8	T8FR15/8XX/BYP/LED	15W	53%

## Construction

- Ideal for cold temperature applications
- Glass tube design provides uniform light distribution
- UL Classified for damp locations
- P.E.T. Shatterproof coated to conform to NSF/ANSI standard 2 - food equipment
- Acceptable for use in enclosed luminaires
- Lightweight 0.96 lbs. construction
- Mercury free

## Installation

- Simple removal of ballast and rewiring of lamp holders
- Single-end powered, requires non-shunted sockets
- UL 1598C classification allows original fixture to maintain UL compliance

## Electrical

- Non-dimmable
- THD <20%
- 120V-277V input range
- Power Factor 0.97

## Ordering Information

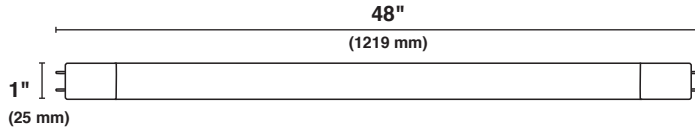


Watt	Base	Product #	Product Code	Volts	Color Temp.	CRI	Lumen Output	Useful Life*	Pkg. Qty.	Beam Spread	DLC® Qualified	Equivalent Wattage
15 Watt	G13	80883	T8FR15/835/BYP/LED	120-277V	3500K	82	1800	50,000	1/25	270°	Yes	32W
15 Watt	G13	80884	T8FR15/840/BYP/LED	120-277V	4000K	82	1800	50,000	1/25	270°	Yes	32W
15 Watt	G13	80885	T8FR15/850/BYP/LED	120-277V	5000K	82	1800	50,000	1/25	270°	Yes	32W

\* Useful Life is defined as the point in time at which the lamp will maintain at least 70% of its initial lumens. The lamp will continue to operate past this point at decreased light levels.

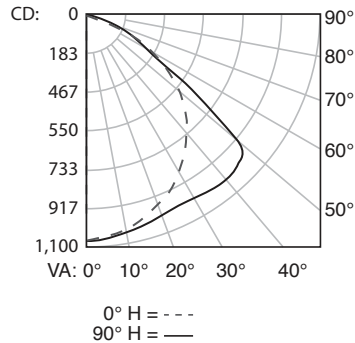
\*\* Check the latest update at [www.DesignLights.org](http://www.DesignLights.org) for listed product catalog numbers. Not all versions are listed.

## Dimensions



## Photometrics

### (2) T8FR15/8XX/BYP//LED INSTALLED IN 2x4 RECESSED TROFFER



### Coefficients of Utilization

Effective Floor Cavity Reflectance 0.20

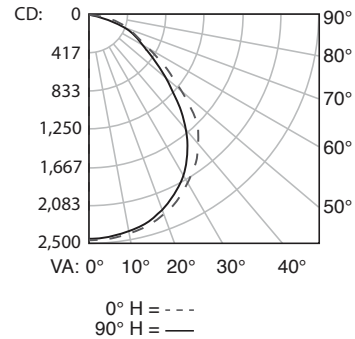
RC	80			70			50		
RW	70	50	30	70	50	30	50	30	20
0	119	119	119	116	116	116	111	111	111
1	110	106	102	108	104	101	100	97	94
2	101	94	88	99	92	86	88	84	80
3	93	83	75	90	81	74	78	72	68
4	85	74	65	83	72	65	70	63	58
5	78	66	57	76	65	57	63	56	50
6	72	59	51	70	58	50	57	49	44
7	67	54	45	65	53	45	51	44	39
8	62	49	41	61	48	40	47	40	35
9	58	45	37	57	44	37	43	36	31
10	54	41	34	53	41	33	40	33	28

### Zonal Lumen Summary

Zone	Lumens	% Lamp	% Fixt
0-30	820.1	28.9	28.9
0-40	1,369.1	48.2	48.2
0-60	2,507.8	88.3	88.4
60-90	330.5	11.6	11.6
70-100	79.0	2.8	2.8
90-120	0.0	0	0
0-90	2,838.2	100	100
90-180	0.0	0	0
0-180	2,838.3	100	100

**Total Luminaire Efficiency = 100.00%**

### (4) T8FR15/8XX/BYP//LED INSTALLED IN 2x4 RECESSED TROFFER



### Coefficients of Utilization

Effective Floor Cavity Reflectance 0.20

RC	80			70			50		
RW	70	50	30	70	30	10	50	30	20
0	119	119	119	116	116	116	111	111	111
1	109	105	101	107	103	99	98	95	93
2	100	93	86	98	91	85	87	82	78
3	92	82	74	90	80	73	78	71	66
4	85	73	65	82	72	64	69	63	57
5	78	66	57	76	65	57	63	56	50
6	72	60	51	70	59	50	57	50	44
7	67	54	46	65	53	45	52	45	39
8	63	50	41	61	49	41	48	40	35
9	59	46	38	57	45	37	44	37	32
10	55	42	34	54	42	34	41	34	29

### Zonal Lumen Summary

Zone	Lumens	% Lamp	% Fixt
0-30	1,909.5	31.2	31.2
0-40	3,111.32	50.9	50.9
0-60	5,159.8	84.4	84.4
60-90	950.2	15.5	15.5
70-100	427.9	7	7
90-120	3.5	0.1	0.1
0-90	6,110.0	99.9	99.9
90-180	6.1	0.1	0.1
0-180	6,110.0	100	100

**Total Luminaire Efficiency = 100.00%**