

## DESCRIPTION

Tapered Glass Cylinder is a downlight trim with the option of frost and blue decorative glass. The trim features die-cast aluminum construction for high-quality fit and finish. The glass cylinder is available in Matte White or Satin Chrome trim finishes to match interior decor. Each model (white and satin chrome) includes both Frost Glass and Blue Glass tapered cylinders allowing customer choice in decorative glass. The glass cylinders are designed to simply drop-into place with removal of the trim's back plate. Glass Cylinder uses MR16 low voltage or GU10 line voltage lamps ideal for accent and task lighting. Trim offers 360° orientation within housing.

## DESIGN FEATURES

Tapered Glass Cylinders are available in Matte White and Satin Chrome trim rings with Frost Glass and Blue Glass Cylinders included. Three pressure springs ensure positive retention in housing.

Trim includes cover glass lens which may be replaced with a variety of media. (Lamps that have integral glass lens do not require use of the cover glass supplied with this trim.)

3014 is designed for use with the following Halo H3 small aperture housings:

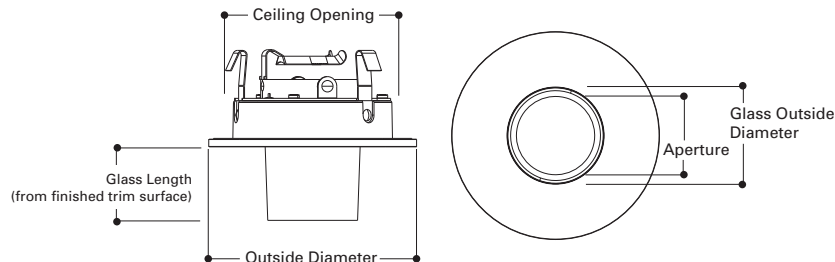
- Line Voltage Housing (for 120V GU10 lamps). For 2 x 6 Construction.
 

|         |     |                                 |
|---------|-----|---------------------------------|
| H36ICAT | 50W | IC Air-Tite Housing             |
| H36TAT  | 50W | Non-IC Air-Tite Housing         |
| H36RTAT | 50W | Non-IC Air-Tite Remodel Housing |
- Low Voltage Housing (for 12V MR16 lamps). For 2 x 6 Construction.
 

|              |     |   |
|--------------|-----|---|
| H36LVICAT    | 50W | IC Air-Tite Housing                       |
| H36LVTAT     | 50W | Non-IC Air-Tite Housing                   |
| H36LVRTAT    | 50W | Non-IC Air-Tite Remodel Housing           |
| H36LVTAT277  | 50W | Non-IC Air-Tite Housing, 120/277V         |
| H36LVRTAT277 | 50W | Non-IC Air-Tite Remodel Housing, 120/277V |
- Line Voltage Housing (for 120V GU10 lamps). For 2 x 8 Construction.
 

|         |     |                     |
|---------|-----|---------------------|
| H38ICAT | 50W | IC Air-Tite Housing |
|---------|-----|---------------------|
- Low Voltage Housing (for 12V MR16 lamps). For 2 x 8 Construction.
 

|           |     |                     |
|-----------|-----|---------------------|
| H38LVICAT | 37W | IC Air-Tite Housing |
|-----------|-----|---------------------|



|  |                |
|--|----------------|
| Aperture                                   | 2" [76mm]      |
| Glass Outside Diameter:                    | 2-3/4" [70mm]  |
| Ceiling Opening:                           | 3-3/4" [95mm]  |
| Outside Diameter:                          | 4-1/4" [108mm] |
| Glass Length (from finished trim surface): | 1-1/2" [38mm]  |

## ORDERING INFORMATION

**SAMPLE NUMBER: 3014FBWH**

Order housing and trims separately.

| Trim   | Finish  |
|--|---|
| <b>3014</b>  |   |
| 3014= 3" Frost & Blue Glass Cylinder with White or Satin Chrome Trim | FBWH=Frost & Blue Glass Cylinder with Matte White Trim*<br>FBSC=Frost & Blue Glass Cylinder with Satin Chrome Trim* |

\* Both Frost & Blue Glass Cylinders included. Glass cylinders are designed to drop into place with removal of three screws securing the trim's back plate.

| Catalog #   |  | Type |
|-------------|--|------|
| Project     |  |      |
| Comments    |  | Date |
| Prepared by |  |      |



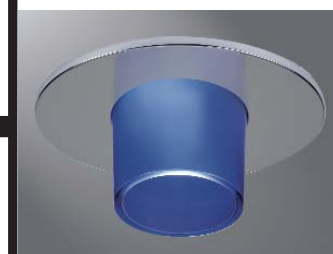
**3014FBWH**  
White Trim w/Frost Glass



**3014FBWH**  
White Trim w/Blue Glass



**3014FBSC**  
Satin Chrome Trim w/Frost Glass



**3014FBSC**  
Satin Chrome Trim w/Blue Glass

**3014**

**3" Glass Cylinder  
Decorative Trim**

**3" TRIM**