

ATHENS 860 Pole Mounted Luminaire

Project Name

Address

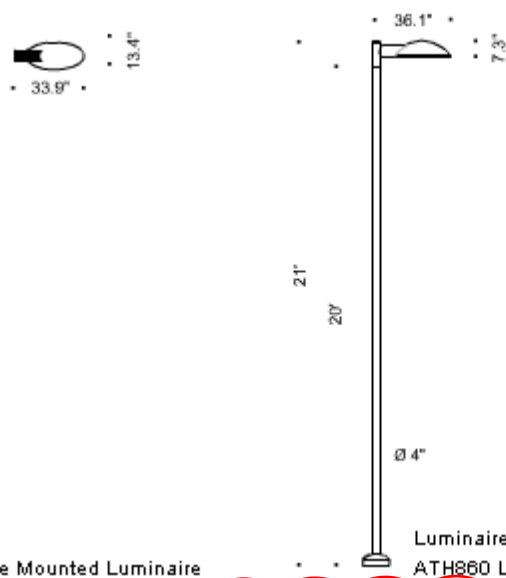
City

State

ZIP



Dimensions



Luminaire EPA = 1.4 sq ft
ATH860 Luminaire = 40 lbs

www.hessamerica.com

Type	Model	Watt	Lamp	Volt	Mounting	Pole	Pole	Finish	Option
	ATH860	150 250	M - Metal Halide	2 - 120 7 - 277	A - Single Mount B - Twin Mount	20RS - 20' Round Straight	S - Steel A - Aluminum	SG - Silver Grey GG - Graphite Grey CC - Custom Color	N - None

Ordering Information


<input type="text"/>	<input type="text" value="ATH860"/>	<input type="text"/>	<input type="text" value="M"/>	<input type="text"/>	<input type="text"/>	<input type="text" value="20RS"/>	<input type="text"/>	<input type="text"/>	<input type="text" value="N"/>
Comment <input type="text"/>									

Specifications are subject to change without notification

HessAmerica . P.O. Box 28 . Gaffney,SC 29342 . Phone: 864-487-3535 . Fax: 864-487-3175 . www.hessamerica.com

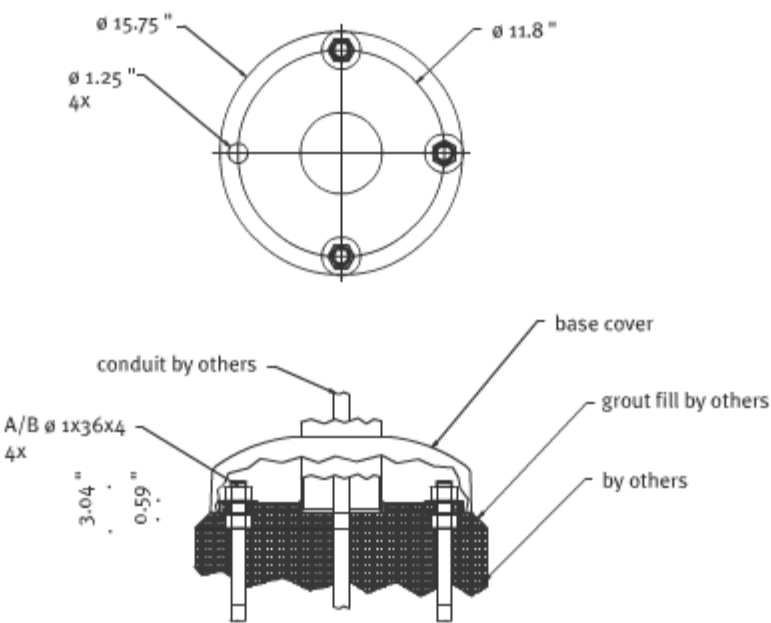
.hess

Specifications

HOUSING	One-piece domed oval housing is die-cast aluminum. Tempered glass lens with cast aluminum lens frame is sealed to the housing with one-piece closed cell silicone gasketing. Hinged lens frame with quarter-turn fastener allows tool-less access for easy relamping. Electrical components are tray mounted. Cast aluminum fitter allows luminaire side mounts to 3" OD mounting arm. All hardware is stainless steel.																
MOUNTING	Luminaire fitter side mounts to 2.375" OD arm with maximum insertion depth of 3.9" and is secured with single recessed stainless steel setscrew.																
OPTICS	Lens is clear tempered glass. Horizontal lamp is positioned within the formed specular aluminum reflector providing an asymmetric distribution pattern.																
ELECTRICAL	Core and coil ballast with class "H" (180°C) insulation system shall have a minimum high power factor rating of 90% and nominal ballast factor of 1.0. Ballast shall be capable of reliable starting to -20°F (-30°C) at nominal line voltage of ±10%. Ballast, capacitor, and starter (where applicable) are UL and CSA recognized. Medium base porcelain socket is 660w-600v, 4kV pulse rated. Mogul base porcelain socket is 1500w-600v, 4kV pulse rated.																
LAMPING	<table><tr><td>Wattage</td><td>150</td><td>250</td></tr><tr><td>Source</td><td>Ceramic Metal Halide</td><td>Ceramic Metal Halide</td></tr><tr><td>Lamp</td><td>MHC150/U/M</td><td>CMH250/U/830/R</td></tr><tr><td>Bulb</td><td>ED-17</td><td>T15</td></tr><tr><td>Base</td><td>Medium</td><td>Mogul</td></tr></table>	Wattage	150	250	Source	Ceramic Metal Halide	Ceramic Metal Halide	Lamp	MHC150/U/M	CMH250/U/830/R	Bulb	ED-17	T15	Base	Medium	Mogul	
Wattage	150	250															
Source	Ceramic Metal Halide	Ceramic Metal Halide															
Lamp	MHC150/U/M	CMH250/U/830/R															
Bulb	ED-17	T15															
Base	Medium	Mogul															
	Lamp is included.																
POLE	Fabricated aluminum bracket assembly is comprised of 2.375" pipe welded to the slipfitter. The 4" OD slipfitter is secured to pole top with two rows of four recessed stainless steel setscrews.																
	Straight round steel pole is manufactured from cold drawn over mandrel, electric-weld, mechanical round steel tubing with nominal wall thickness of 0.177". Flush mounted handhole cover is plasma cut with kerf not to exceed 1/8" and includes triangular tamper-resistant locking device. Tenon is machined and inserted into the pole shaft then plug welded, showing no visible weld at the transition. Pole is hot-dip galvanized with coating inside and out, then lightly sanded prior to painting. Base cover is one-piece 0.080" spun aluminum and finished to match the pole. Nominal pole height is 20'.																
	Contact factory for round straight aluminum pole.																
FINISH	Housing is ultrasonically cleaned prior to painting. Standard finish is finely textured matte silver grey metallic or graphite grey. Special colors available on request.																
WARRANTY	Limited product warranty period is three years. Lamp and ballast shall carry the respective manufacturer's limited warranty.																
CERTIFICATION	 Certified for Wet Locations																

Specifications are subject to change without notification

Specifications



Specifications are subject to change without notification

HessAmerica . P.O. Box 28 . Gaffney,SC 29342. Phone: 864-487-3535 . Fax: 864-487-3175 . www.hessamerica.com

.hess