



# SERIES 605P1

TYPE: \_\_\_\_\_  
 CATALOGUE #: \_\_\_\_\_  
 NOTES: \_\_\_\_\_



## Decorative Style Equipment —6 Volt Maintenance-Free Lead Calcium Battery

*Black Gimbal Available*



**Application:** Classic high-hat style unit with gimbal mounted lamp, fully recesses into ceiling with only the lens and trim visible. Ideal for low ceilings and blends inconspicuously with existing recessed lighting schemes.

### Features

- **CONSTRUCTION:** All components are contained in drawn steel box. Standard finish of trim is white plastic.
- **MOUNTING:** Recess mounts into ceiling. Comes standard with slide out chassis. Series 605P1 is UL Listed for use in insulated ceilings.
- **ELECTRONICS:**
  - Automatic, temperature compensated, pulse type charger
  - High capacity, automatic, dust tight instantaneous transfer relay
  - Low voltage disconnect prevents overdischarge of battery. Automatic brownout protection is provided
  - Labor saving AC line latch prevents battery discharge during installation to a non-energized circuit.
- **CONTROLS:**
  - Red charge monitor LED indicates state of charge of the battery.
  - Momentary test switch allows for quick operational check of entire system.
- **POWER REQUIREMENTS:**  
120/277 Vac, 60Hz, 0.1/0.05 Amp.

### Battery

6 volt, long life, maintenance-free sealed Lead Calcium, long life Lead Calcium or Nickel-Cadmium.

### Lamp

Furnished with an 8 watt high intensity halogen lamp with a horizontal rotation of 358° and vertical angle adjustable to 42°. For isofootcandle distribution curves refer to the isofootcandle diagrams in the charts & diagrams section.

### Accessories

Remote Test Switch . . . . .-PSW

### Options

(Add Suffix to Model No.)      Suffix  
 Black Housing and Gimbal . . . . .-B  
 NYC approved version . . . . .-M\*  
 \*Includes metal trim and gimbal assembly.

Note: Certain option combinations may affect the UL listing. Please contact the factory for specifics.

## Unit Selection Chart

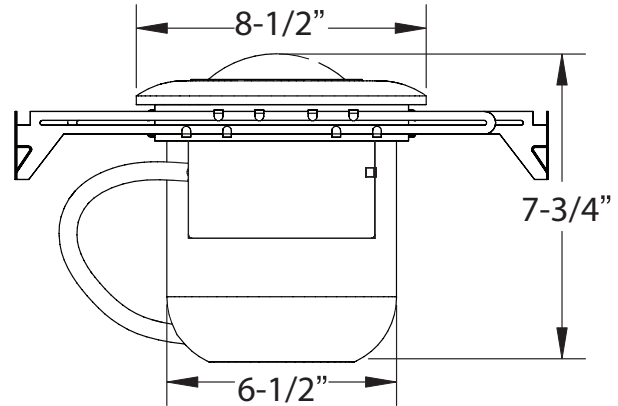
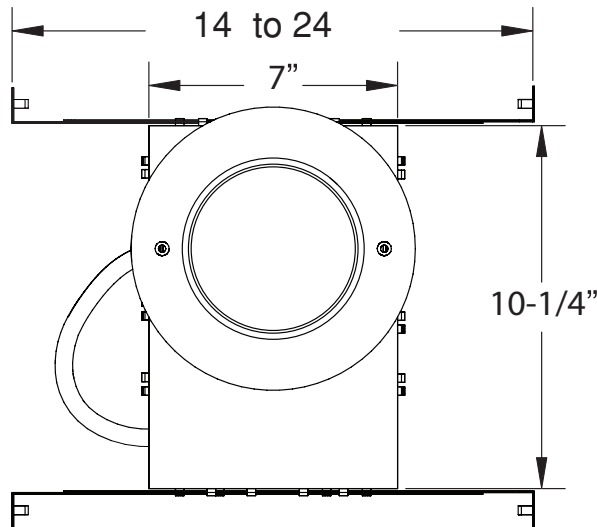
#### NO REMOTE CAPABILITY

Volts	Model No. (Unit/Lamp Suffix)	Battery Type	Capacity in Watts to 87 1/2 % of Nominal Battery Voltage				Standard Lamps		
			1 1/2 Hrs.	2 Hrs.	3 Hrs.	4 Hrs.	Watts/ Heads	Type	Lamp Rplc. No.
6	LS605P1-HB	Lead Calcium	9	—	—	—	8	Halogen	580.0013
6	605E1/LH5-R	Long-life Lead	9	—	—	—	8	Halogen	580.0013

#### WITH REMOTE CAPABILITY

6	605C1/LH5-R	Nickel Calcium	18	12	9	—	8	Halogen	580.0013
6	605E2/LH5-R	Long-life Lead	18	11	8	—	8	Halogen	580.0013

# Specifications For Series 605P1



**GENERAL:** The contractor will furnish and install 6 volt emergency lighting units, as indicated on all plans. Units shall be designed for recessed ceiling installation. Input power shall be 120/277 volt 60 Hz.

**HOUSING:** The upper side of the recessed steel housing shall contain the battery and charger. The lower portion of the housing will contain an 8 watt halogen lamp with a horizontal rotation of 358° and vertical angle adjustable to 42°.

**BATTERY:** Unit shall contain a choice of 6 volt sealed, non-refillable, maintenance-free, Lead Calcium battery, Long-Life Lead Calcium or Nickel-Cadmium.

**TRANSFER:** A heavy duty dust-tight transfer relay shall automatically and instantaneously connect the lamp load to the battery upon failure of the AC supply, and shall disconnect the lamps when normal power is restored.

**CHARGER ASSEMBLY:** An automatic, temperature compensated, pulse type charger shall be provided. The charger shall be reverse polarity protected, short-circuit proof and capable of recharging the battery in accordance with UL924.

**A low voltage disconnect** shall be provided to shut off the lamp load and circuitry when battery reaches 87½% discharge to protect battery from possible damage due to deep discharge. **Brownout circuit** shall be provided which activates emergency mode when AC power dips below 80-85% of nominal voltage. **AC line latch** circuit shall be provided which prevents battery discharge during installation to a non-energized circuit.

**CONTROLS:** **Charger monitor LED** shall be provided to indicate state of charge of the battery. **Momentary test switch** shall be provided to allow for periodic testing of the entire system.

**WARRANTY:** Entire unit (less lamps & fuses) shall carry a 3 year full warranty against defects in parts or workmanship under normal and proper use. The sealed Lead Calcium battery shall carry an additional 3 year pro-rata warranty.

**MANUFACTURER:**

Unit shall be Lightalarms Model \_\_\_\_\_ .

## Ordering Information

Example: LS605P1-HB-R-M

Series	Battery Type Capacity	Lamp	Mounting	Options
LS605= series	P1= see chart	-HB=	-R= recessed	-M= voltmeter

## Unit Rating Chart

NO REMOTE CAPABILITY						
Volts	Model # (Unit/Lamp Suffix)	Battery Type	*Watts to 87-1/2% of Rated Battery Voltage			
			1-1/2 Hrs.	2 Hrs.	3 Hrs.	4 Hrs.
6	LS605P1-HB	Lead-Calcium	9	—	—	—
6	605E1/LH5-R	Long-Life Lead	9	—	—	—
WITH REMOTE CAPABILITY						
6	605C1/LH5-R	Nickel-Calcium	18	12	9	—
6	605E2/LH5-R	Long-Life Lead	18	11	8	—

\* National Electrical Code Specification



**Thomas & Betts**