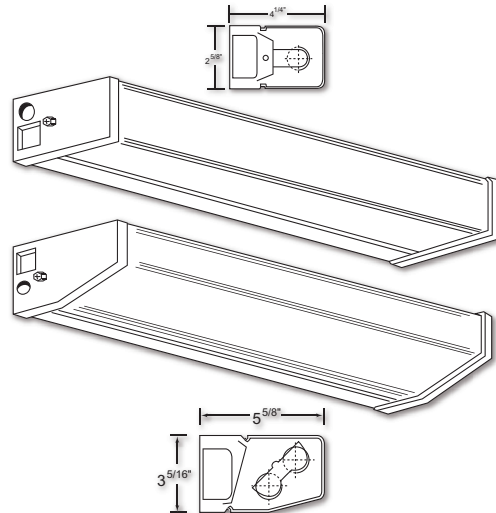


**D**  
**SERIES**  
**S Q U A R E**  
**C O R N E R**  
**DECORATIVE**  
**L U M I N A I R E**

Job Name	
Catalog Number	
Notes	Type



***application***

- An attractive square corner task light, excellent for bathrooms, dressing rooms or appliances
- Available in two complimenting designs to accommodate almost every application
- May be surface mounted, horizontally or vertically, individually or in continuous rows for a contemporary linear look
- Available in 1 and 2 lamp units 18 to 48 inches in length with numerous lamp/ballast combinations

***finish***

- Prior to painting, all metal parts are treated with a multi-stage phosphate bonding process to ensure adhesion and inhibit rusting
- Painted with a lighting grade baked white enamel, having a reflectance factor exceeding 87% for premium quality and durability

***construction***

- The D series is a decorative and versatile surface mounted luminaire specifically designed for long-term installations
- Features durable steel bodies, quality paint finishes and superior electrical components
- Die formed from cold rolled steel for strength and uniformity
- Ends are die formed for added strength and fastened securely to the housing by 2 standard acorn nuts, allowing for easy cleaning and servicing
- The ends retain the diffuser with positive engagement reducing vibration hazards
- Wireway covers are die formed for durability and attach easily and securely with two screws; tamper proofing is available
- Ample knockouts are provided on back for convenient installation
- Available in standard Chrome or optional White
- All fixtures are U.L. listed and IBEW union made

***electrical***

- All electrical components are U.L. listed
- Ballasts are class P, thermally protected
- 120V normal power factor is standard on all units 3ft. and smaller
- 120V high power factor, energy saving ballasts comply with Federal Energy Efficiency Standards and are standard on all 4 ft. units
- Numerous options are available: T8 electronic, dimming, switching; see ordering information on back

***diffuser***

- One-piece extruded white, light stabilized acrylic is standard
- Features a linear refractive pattern for even illumination
- Grooved formation on the edges allow for a tight, no light leak attachment to the body

**LaMar**  
**Lighting**  
Company, Inc.

**D**  
**SERIES**  
**SQUARE CORNER**  
**DECORATIVE**  
**LUMINAIRE**

**ordering guide**

NOTE: SOME ORDERING OPTIONS APPEAR ON PRODUCT LINE. FOR OTHER OPTIONS, SEE LIST AT RIGHT.

SAMPLE ORDER NUMBER



SERIES COLOR NO. LAMPS WATTAGE TANDEM BALLAST TYPE VOLTAGE OPTIONS DIMENSIONS LAMP TYPE

T-12 ORDERING GUIDE										
D	W, C	1	15			M2, MP	1, 7		4 1/4" x 18"	F15T12
D	W, C	1	20			M2, MP	1, 7		4 1/4" x 24"	F20T12
D	W, C	1	30			R2, M2	1, 7		4 1/4" x 36"	F30T12
D	W, C	1	40			R2, M2	1, 7		4 1/4" x 48"	F40T12
D	W, C	1	30	T		M2	1, 7	2B	4 1/4" x 72 1/2"	F30T12
D	W, C	1	40	T		M2	1, 7	2B	4 1/4" x 96 1/2"	F40T12
D	W, C	1, 2	15			M2, MP	1, 7		5 5/8" x 18"	F15T12
D	W, C	1, 2	20			M2, MP	1, 7		5 5/8" x 24"	F20T12
D	W, C	1, 2	30			R2, M2	1, 7		5 5/8" x 36"	F30T12
D	W, C	1, 2	40			R2, M2	1, 7		5 5/8" x 48"	F40T12
D	W, C	1, 2	30	T		M2	1, 7	2B	5 5/8" x 72 1/2"	F30T12
D	W, C	1, 2	40	T		M2	1, 7	2B	5 5/8" x 96 1/2"	F40T12

T-8 ORDERING GUIDE										
D	W, C	1	15			E8, P8	1, 7		4 1/4" x 18"	F15T8
D	W, C	1	17			E8	1, 7		4 1/4" x 24"	F17T8
D	W, C	1	25			E8	1, 7		4 1/4" x 36"	F25T8
D	W, C	1	32			E8	1, 7		4 1/4" x 48"	F32T8
D	W, C	1	25	T		E8	1, 7	2B	4 1/4" x 72 1/2"	F25T8
D	W, C	1	32	T		E8	1, 7	2B	4 1/4" x 96 1/2"	F32T8
D	W, C	1, 2	15			E8, P8	1, 7		5 5/8" x 18"	F15T8
D	W, C	1, 2	17			E8	1, 7		5 5/8" x 24"	F17T8
D	W, C	1, 2	25			E8	1, 7		5 5/8" x 36"	F25T8
D	W, C	1, 2	32			E8	1, 7		5 5/8" x 48"	F32T8
D	W, C	1, 2	25	T		E8	1, 7	2B	5 5/8" x 72 1/2"	F25T8
D	W, C	1, 2	32	T		E8	1, 7	2B	5 5/8" x 96 1/2"	F32T8

Note: Tandem units contain double the amount of lamps shown

**options**

OPTIONS: INSERT APPROPRIATE CODE FOR CUSTOMIZED ORDERING

**BALLAST**

- M2 Magnetic T12
- MP Magnetic HPF
- R2 Residential T12
- E8 Electronic T8
- EDX Electronic Dimming Advance MX
- P8 Pre-heat T8

NOTE: In order to achieve rated lamp life, fixtures controlled by motion sensors should be ordered with programmed start ballasts when available and minimum time delay should be set to 15 minutes - Consult Factory

**VOLTAGE**

- 1 120V
- 7 277V
- U Universal 120 - 277V

**COLOR**

- C Chrome
- W White

**GENERAL OPTIONS**

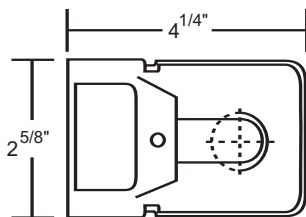
- EM Emergency pack, 1 lamp 90 min. up to 500 lu.
- 2C 2 Circuit
- LT Low temperature ballast
- PS Push switch
- PC Pull chain
- TS Turn switch
- 2B 2 Bodies
- CO Grounded convenience outlet
- TP Tamperproof

Multiple cord options are available.

**dimensional data**

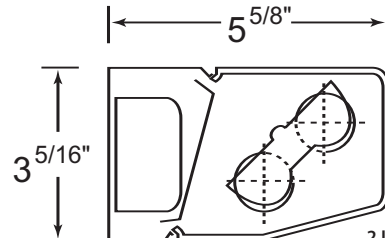
NOTE: SPECIFICATIONS AND DIMENSIONAL DATA ARE SUBJECT TO CHANGE WITHOUT NOTICE.

**cross sections**



1 LAMP BODY TYPE

**switch and convenience outlet locations**



2 LAMP BODY TYPE

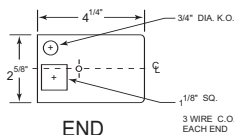
NOTE: Two-lamp body type is available with single lamp. Consult factory for details.

**accessories**

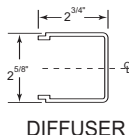
**LAMP OPTIONS**

- 12 T8 741K
- 15 T8 735K
- 10 T8 730K
- 13 T8 841K
- 16 T8 835K
- 11 T8 830K

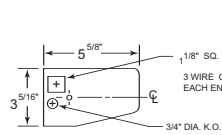
**back knockout plans and lengths**



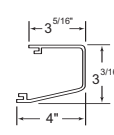
END



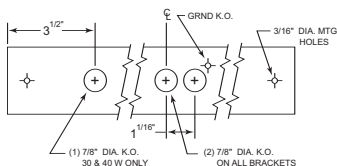
DIFFUSER



END

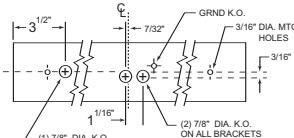


DIFFUSER



BACK

SIZE	LENGTH
4 W	9 1/8"
6 W	12 1/8"
8 W	15 1/8"
14 W	15 1/8"
15 W	18 1/8"
20 W	24 1/8"
30 W	36 1/8"
40 W	48 1/8"



BACK

SIZE	LENGTH
15 W	18 1/4"
20 W	24 1/4"
30 W	36 1/4"
40 W	48 1/4"

Revised 10/08

**LAMAR LIGHTING** 485 Smith Street, Farmingdale, NY 11735 • Tel (631) 777-7700  
 Fax (631) 777-7705 • Outside NY (800) 724-7743 • www.lamarlighting.com

