

VTS SERIES

**E N C L O S E D
V A P O R - P R O O F
L U M I N A I R E**

Job Name	
Catalog Number	
Notes	Type



application

- Versatile moisture, vapor and dust proof enclosed luminaire
- An excellent choice for food processing areas, car washes, cool storage areas and locations subject to the elements
- Vandal resistant options are available
- Available in 1, 2 or 3 light, two, four or eight foot lengths and numerous lamp/ballast combinations
- May be individually mounted or row mounted with a continuous feed

finish

- Fiberglass housing and latches are permanently finished in an off-white color
- Prior to painting, all metal parts are treated with a multi-stage phosphate bonding process to ensure adhesion and inhibit rusting
- All steel components are painted with a lighting grade baked white enamel, having a reflectance factor exceeding 87% for premium quality and durability

construction

- The VTS series is a high quality fluorescent enclosed luminaire specifically designed for long-term, element prone installations
- Features internal steel geartray enclosed in durable fiberglass, quality paint finishes and superior electrical components
- Housing is molded of one-piece impact resistant fiberglass reinforced polyester; self extinguishing, flame resistant and unaffected by many industrial chemicals
- Gasketing is poured in place forming a continuous tight seal with the diffuser
- Celcon cam action retaining latches clamp the diffuser tightly to the housing; tamper proofing and stainless latches are available
- Interior geartray is constructed of heavy gauge steel where all electrical components are mounted for ease of service
- Ample knockouts are provided for convenient installation
- Die cast bushings; end and back mounting brackets are available consult factory
- All fixtures are U.L. listed, IBEW union made and IP65 rated

electrical

- All electrical components are U.L. listed
- Ballasts are class P, thermally protected
- Numerous options are available; see ordering information on back

diffuser

- One piece thermally formed clear acrylic with 15% DR added for greater strength
- Features an internal crepe pattern for a smooth, easy cleaning exterior

**Lamar
Lighting**
Company, Inc.

VTS SERIES

ENCLOSED VAPOR-PROOF
LUMINAIRE

ordering guide

NOTE: SOME ORDERING OPTIONS APPEAR ON PRODUCT LINE.
FOR OTHER OPTIONS, SEE LIST AT RIGHT.

SAMPLE ORDER NUMBER



SERIES NO. WATTAGE TANDEM BALLAST VOLTAGE DIFFUSER OPTIONS DIMENSIONS LAMP TYPE
LAMPS TYPE 1 2

T-12 ORDERING GUIDE										
VTS	1, 2	40		E2	1, 7	SA			7 ³ / ₈ " x 49 ³ / ₈ "	F40T12
VTS	1, 2	40	T	E2	1, 7	SA			7 ³ / ₈ " x 97 ³ / ₄ "	F40T12
VTS	1, 2	48		E2, EH	1, 7	SA			7 ³ / ₈ " x 51 ⁷ / ₈ "	F48T12/F48T12HO
VTS	1, 2	96		E2, EH	1, 7	SA			7 ³ / ₈ " x 97 ³ / ₄ "	F96T12/F96T12HO
T-8 ORDERING GUIDE										
VTS	1, 2, 3	17		E8	1, U	SA			7 ³ / ₈ " x 25 ³ / ₈ "	F17T8
VTS	1, 2, 3	32		E8	1, U	SA			7 ³ / ₈ " x 49 ³ / ₈ "	F32T8
VTS	1, 2, 3	32	T	E8	1, U	SA			7 ³ / ₈ " x 97 ³ / ₄ "	F32T8
VTS	1, 2, 3	96		E8, H8	1, U	SA			7 ³ / ₈ " x 97 ³ / ₄ "	F96T8/F96T8HO
T-5 ORDERING GUIDE										
VTS	1, 2, 3	28, 54		E5, H5	1, U	SA			7 ³ / ₈ " x 49 ³ / ₈ "	F28T5/F54T5HO
VTS	1, 2, 3	28, 54	T	E5, H5	1, U	SA			7 ³ / ₈ " x 97 ³ / ₄ "	F28T5/F54T5HO

Note: Tandem units contain double the amount of lamps shown

options

OPTIONS: INSERT APPROPRIATE CODE FOR
CUSTOMIZED ORDERING

BALLAST

- E2 Electronic T12
- E8 Electronic T8
- E5 Electronic T5
- EH Electronic High Output T12*
- H5 Electronic T5 HO
- H8 Electronic T8 HO
- ED Electronic Dimming
- * Suitable for year-round cool temperature use only
Not recommended for use above 50°F

NOTE: In order to achieve rated lamp life, fixtures controlled by motion sensors should be ordered with programmed start ballasts when available and minimum time delay should be set to 15 minutes - Consult Factory

VOLTAGE

- 1 120V
- 7 277V
- U Universal 120 - 277V

GENERAL OPTIONS

- EM Emergency pack, 1 lamp
90 min. up to 500 lu.
- 2C 2 Circuit

DIFFUSER OPTIONS

- SA Standard crepe acrylic

UL APPROVED FOR WET LOCATIONS

accessories

- TP Polycarbonate tamper-proof latches/screws
- TS Tamper-proof stainless steel latches
- MB Mounting brackets (pair)

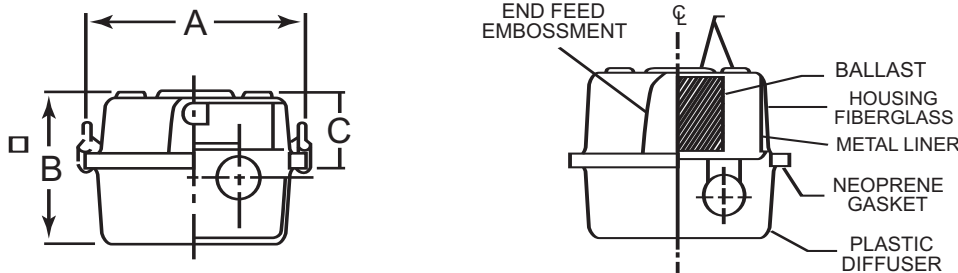
LAMP OPTIONS

- 12 T8 741K
- 15 T8 735K
- 10 T8 730K
- 13 T5/T8 841K
- 16 T5/T8 835K
- 11 T5/T8 830K

dimensional data

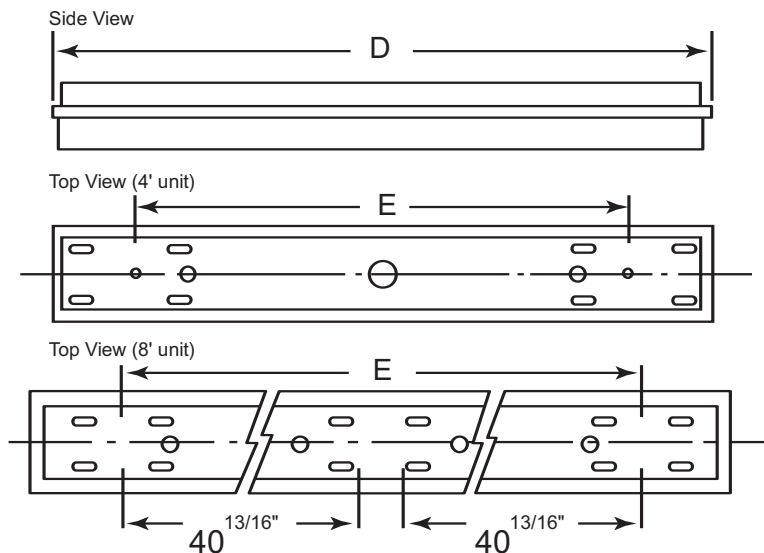
NOTE: SPECIFICATIONS AND DIMENSIONAL DATA ARE SUBJECT
TO CHANGE WITHOUT NOTICE.

cross sections



Cat. No.	A	B	C	D	E
VT 4' BiPin	7.625"	5.625"	3.625"	50"	38.75"
VT 8' ALL UNITS	7.625"	5.625"	3.625"	98"	86.675"

back knockout plans and lengths



Revised
10/08

LAMAR LIGHTING 485 Smith Street, Farmingdale, NY 11735 • Tel (631) 777-7700
Fax (631) 777-7705 • Outside NY (800) 724-7743 • www.lamarlighting.com