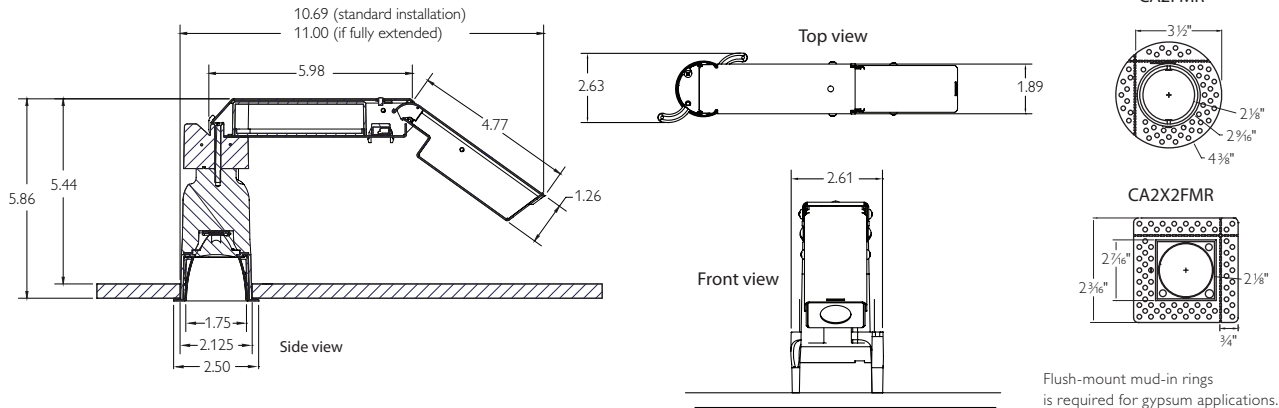


Calculite 1.75" Aperture, 400 Lumen LED

Catalog number:

Notes:

Type:



Ordering Guide: Frame-in Kits

Frame-in Kit Series	Lumen Package (nominal)	Style	Color Temp	Beam Spread	Installation Style ²	Input Voltage
C2L	04 (400 Lumens)	DL (Downlight flanged) DLFT (Downlight flush-mount) ¹	30K (3000K) 27K (2700K)	12 (12 degrees) 17 (17 degrees) 25 (25 degrees) 38 (38 degrees) 47 (47 degrees)	R (install-from-below)	1 (120V) UZ10V (universal with 0-10V dimming)

¹requires "FT" series reflectors and mud ring (ordered separately)

Ordering Guide: Reflectors

Reflector Series	Style	Finish	Flange
C2L (Round)	DL (Downlight-50° cutoff) DLLS (Downlight with linear spread lens-75° cutoff) LW (Lensed Wall Washer) ^{3,4}	BK (Black) CCD (Comfort Clear Diffuse) CCZ (Champagne Bronze) WH (Painted White)	P (aperture-matching) FT (Flush mount)*
C2X2L (Square)	DL (Downlight-50° cutoff) LW (Lensed Wall Washer) ³	BK (Black) WH (Painted White)	P (Aperture-matching) FT (Flush-mount)*
	³ 17° beam spread recommended ⁴ 18" max installation from vertical surface recommended		*requires "FT" series frame-in kit

Calculite 1.75" Aperture, 400 Lumen LED

Features

Aperture: 1.75" (44 mm) I.D., 2.50" (63mm) O.D.

Input Wattage: 11W max. (C2L04)

Fixture Output: Aluminum. Provides 50° cutoff to source & source image. Self-flanged.

Beam Spread options:

Beam Spread	Spacing Criterion	Delivered Lumens	Efficacy	CBCP
12°	0.2	328 lm	29.8 lm/w	5099
17°	0.3	412 lm	37.3 lm/w	3282
25°	0.4	382 lm	36.0 lm/w	1995
38°	0.6	377 lm	34.9 lm/w	936
47°	0.7	331 lm	30.0 lm/w	544

Reflector Cone: Aluminum. Provides 50° cutoff to source & source image. Twist & lock installation within frame-in kit ensures snug fit to ceiling.

Reflector Flange: Thickness: 0.09" (2.4 mm). Width (flanged) 0.37" (9.5 mm). Width "flush-mount) 0.19" (4.8 mm)

Required Depth: 5.91" (150 mm). 5.5" plenum depth required for Non-IC installation. see above for fixture dimensions

Ceiling Cutout: 2.125" (54mm)

Installation: Hinged design allows fixture to be installed from below ceiling. Two screws actuate pivoting installation arms.

Vertical installation only (as shown in above drawings).

Thick Ceiling Capability: 3/8" - 2".

Optical Accessories: One (1) accessory as defined in "Accessories-Optical" below. Accessories install securely to top of reflector housing. Proper positioning ensured via offset die cut.

Field Accessibility: LED array, beam spreads (optics) and driver are field interchangeable/replaceable

Fixture Weight: 1.8 Lbs.

Electrical

Power connection: Integral connection between driver and LED array

Junction Box: UL listed for 6 No 12 AWG, 90°C through branch circuit connectors. Allows inspection from below. Compatible with 2-1 conduit connector for daisy chaining.

Minimum Starting Temperature: -20°C

Maximum Operating Temperature: 60°C

Input Voltage: 120V

Input Frequency: 60Hz

Input Current: .09A

LED Drive Current: 670mA

Input Power: 11W

LED Power: 9.1W

THD: <20%

Power Factor: >0.9

FCC Rating: Part 15 / Class B driver

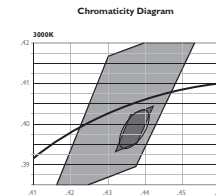
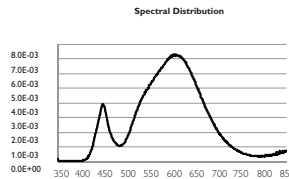
Technology

Array: 4-chip LED array featuring 2-step SDCM binning control

Photometric Performance: Tested in accordance to IESNA LM-79-2008

Color Consistency: 2 SDCM (max.)

Spectral Power Distribution:



Ra	R1	R2	R3	R4	R5	R6	R7	R8	R9
81.0	80.2	87.1	91.0	78.9	78.3	81.0	85.6	66.2	21.3
R10	R11	R12	R13	R14					
67.7	74.9	62.1	81.4	94.2					

Dimming Capability: ELV dims to nominal 10% lumen output.

See LED-DIM specification sheet for dimming system compatibility.

Emergency Capability (Inverter): Yes.

See LED-LMI specification sheet

Rated Life

LED Array: 50,000 hours at 70% lumen maintenance (L70, B50).

Based on IESNA LM-80-2008.

Driver: 50,000 hours

Labels

UL, cUL, I.B.E.W, AirSeal

17°, 25° & 38° & 47° beams suitable for wet location

12° beam suitable for damp location

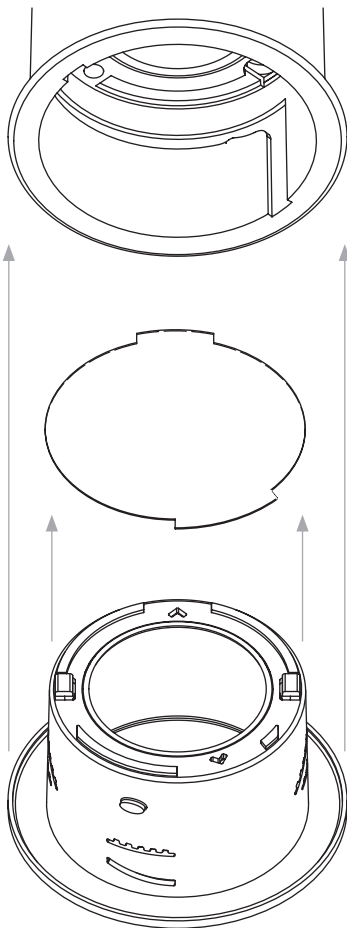
5 year warranty

Calculite 1.75" Aperture, 400 Lumen LED

Ordering Guide: Accessories

Accessories-Optical	Lumen Package (nominal)*
CA2DF2	2 degree clear diffusion film
CA2DF85	85 degree frosted diffusion film
CA2OPF	Opal 2700K warming / frosted diffusion film
* Actual diffusion depends on selected beam spread	

To minimize accessory thickness and thus maximize optical performance, microstructure lenses are utilized in lieu of traditional glass lenses.



Reflector can be rotated 90° to ensure proper alignment. Friction-fit design maintains installation integrity.

For wall washer & linear spread options, lenses are factory-assembled into specified reflector.

Accessories are keyed to ensure proper installation.

Fixtures accept one accessory, which can be field-installed in any reflector assembly.

Durability

Calculite LED 1.75" fixtures operating temperatures are well below the recommended thermal limit of each optical accessory, eliminating lens degradation and ensuring maximum optical stability.

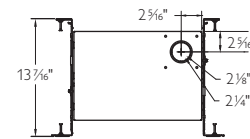
Ordering Guide: Installation Accessories

Accessories-Installation	Lumen Package (nominal)*
C2LIC	IC frame (new construction)
C2LMP	New construction mounting pan
CA2FMR	Round aperture flush-mount mud-in ring
CA2X2FMR	Square aperture flush-mount mud-in ring
* Recommended for specific applications.	

Optional Installation Accessories

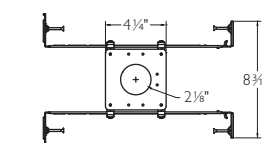
The standard C2L product offering is Non-IC, wet location listed* with no additional "frame-in kit" required. Listed below are additional frame options.

C2LIC



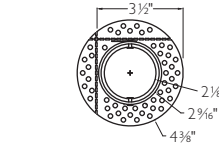
IC frame (new construction). Certified for use in Chicago Plenum applications. Includes bar hangers with preset screws which accommodate 12"-24" joist spacing. Bars also attach to T-bar ceilings. Width (min): 13 7/16", Length: 14 9/16", Depth: 9 5/16".

C2LMP



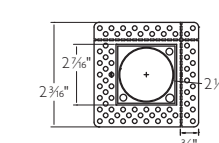
New construction mounting pan provides ability to prelocate wiring for easy below-ceiling access. Includes bar hangers with preset screws which accommodate 12"-24" joist spacing. Bars also attach to T-bar ceilings. Width: 5.5", Length (min): 13.12"

CA2FMR



Round aperture flush-mount mud-in ring. Recommended for gypsum applications. Perforated flange allows installation only 1.4" from vertical structure, including corners.

CA2X2FMR

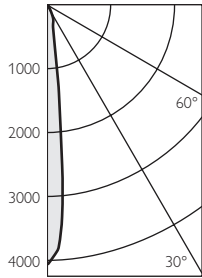


Square aperture flush-mount mud-in ring. Recommended for gypsum applications. Perforated flange allows installation only 1.4" from vertical structure, including corners. Square plate secures magnetically to mud-in ring. Tether included.

Calculite 1.75" Aperture, 400 Lumen LED

Reflector Finish Multipliers: CCD (1.0) WH (0.95) CCZ (0.88 (est.)) BK (tbd) CCD finish is tested. All other finishes calculated.

Candela Plot



Fixture: C2L04DL30K12R1
Reflector: C2LDLCCDP
Accessory: none
Beam Angle: 12°
Spacing Ratio: 0.2
CBCP: 5099
Lumens: 328
Watts: 11
Efficacy (lm/w): 29.8
CCT: 2990
Cutoff: 50°

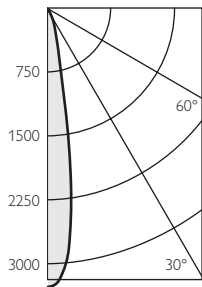
Single Unit Data

Ceiling Height	Initial Footcandles	Beam Diameter
5'	204	1.0'
6'	142	1.2'
7'	104	1.4'
8'	80	1.6'
9'	63	1.8'

Candela Table

Angle	Intensity	Lumens
0	5099	
5	2829	118
15	290	83
25	61	45
35	14	9
45	7	6
55	3	3
65	1	1

Candela Plot



Fixture: C2L04DL30K17R1
Reflector: C2LDLCCDP
Accessory: none
Beam Angle: 17°
Spacing Ratio: 0.3
CBCP: 3282
Lumens: 412
Watts: 11
Efficacy (lm/w): 37.3
CCT: 2979
Cutoff: 50°

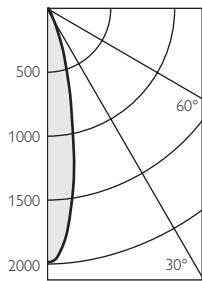
Single Unit Data

Ceiling Height	Initial Footcandles	Beam Diameter
5'	131	1.5'
6'	91	1.8'
7'	67	2.1'
8'	51	2.4'
9'	41	2.7'

Candela Table

Angle	Intensity	Lumens
0	3282	
5	2835	212
15	432	133
25	126	56
35	13	9
45	3	2
55	0	0
65	0	0

Candela Plot



Fixture: C2L04DL30K25R1
Reflector: C2LDLCCDP
Accessory: none
Beam Angle: 25°
Spacing Ratio: 0.4
CBCP: 1995
Lumens: 382
Watts: 10.6
Efficacy (lm/w): 36.0
CCT: 2979
Cutoff: 50°

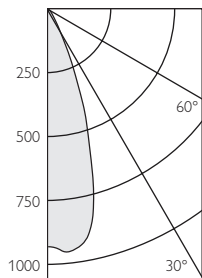
Single Unit Data

Ceiling Height	Initial Footcandles	Beam Diameter
5'	80	2.0'
6'	55	2.4'
7'	41	2.8'
8'	31	3.2'
9'	25	3.6'

Candela Table

Angle	Intensity	Lumens
0	1995	
5	1742	147
15	623	174
25	86	51
35	12	8
45	3	2
55	0	0
65	0	0

Candela Plot



Fixture: C2L04DL30K38R1
Reflector: C2LDLCCDP
Accessory: none
Beam Angle: 38°
Spacing Ratio: 0.6
CBCP: 936
Lumens: 377
Watts: 10.8
Efficacy (lm/w): 34.9
CCT: 2977
Cutoff: 50°

Single Unit Data

Ceiling Height	Initial Footcandles	Beam Diameter
5'	37	3.0'
6'	26	3.6'
7'	19	4.2'
8'	15	4.8'
9'	12	5.4'

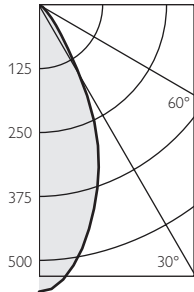
Candela Table

Angle	Intensity	Lumens
0	936	
5	959	90
15	668	180
25	167	84
35	28	19
45	4	4
55	0	0
65	0	0

Calculite 1.75" Aperture, 400 Lumen LED

Reflector Finish Multipliers: CCD (1.0) WH (0.95) CCZ (0.88 (est.)) BK (tbd) CCD finish is tested. All other finishes calculated.

Candela Plot



Fixture: C2L04DL30K47R1
Reflector: C2LDLCCDP
Accessory: none
Beam Angle: 47°
Spacing Ratio: 0.7
CBCP: 544
Lumens: 331
Watts: 11
Efficacy (lm/w): 30.0
CCT: 2970
Cutoff: 50°

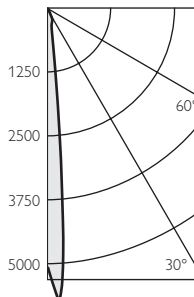
Single Unit Data

Ceiling Height	Initial Footcandles	Beam Diameter
5'	22	3.5'
6'	15	4.2'
7'	11	4.9'
8'	9	5.6'
9'	7	6.3'

Candela Table

Angle	Intensity	Lumens
0	544	
5	523	40
15	401	109
25	247	128
35	73	60
45	10	11
55	2	3
65	1	1

Candela Plot



Fixture: C2L04DL30K12R1
Reflector: C2LDLCCDP
Accessory: CA2DF2 (2° diffusion film)
Beam Angle: 12°
Spacing Ratio: 0.2
CBCP: 4058
Lumens: 325
Watts: 10.7
Efficacy (lm/w): 30.4
CCT: 2990
Cutoff: 50°

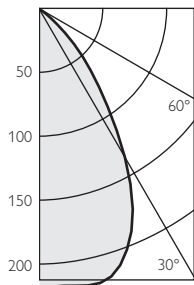
Single Unit Data

Ceiling Height	Initial Footcandles	Beam Diameter
5'	162	1.0'
6'	113	1.2'
7'	83	1.4'
8'	63	1.6'
9'	50	1.8'

Candela Table

Angle	Intensity	Lumens
0	4058	
5	2521	167
15	299	88
25	101	49
35	19	12
45	7	6
55	2	2
65	0	0

Candela Plot



Fixture: C2L04DL30K12R1
Reflector: C2LDLCCDP
Accessory: CA2DF85 (85° diffusion film)
Beam Angle: 66°
Spacing Ratio: 1.0
CBCP: 217
Lumens: 256
Watts: 10.7
Efficacy (lm/w): 23.9
CCT: 2990
Cutoff: 50°

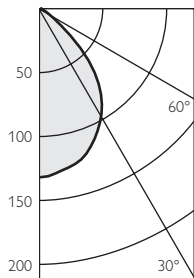
Single Unit Data

Ceiling Height	Initial Footcandles	Beam Diameter
5'	9	5.0'
6'	6	6.0'
7'	4	7.0'
8'	3	8.0'
9'	3	9.0'

Candela Table

Angle	Intensity	Lumens
0	217	
5	217	21
15	216	60
25	172	77
35	93	58
45	38	29
55	7	7
65	2	2

Candela Plot



Fixture: C2L04DL30K12R1
Reflector: C2LDLCCDP
Accessory: CA2OPF
 (Opal warming/diffusion lens)
Beam Angle: 80°
Spacing Ratio: 1.1
CBCP: 133
Lumens: 190
Watts: 10.7
Efficacy (lm/w): 17.8
CCT: 2840
Cutoff: 50°

Single Unit Data

Ceiling Height	Initial Footcandles	Beam Diameter
5'	5	5.5'
6'	4	6.6'
7'	3	7.7'
8'	2	8.8'
9'	2	9.9'

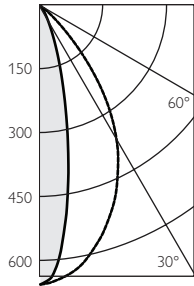
Candela Table

Angle	Intensity	Lumens
0	133	
5	130	13
15	123	34
25	106	49
35	83	51
45	44	33
55	8	9
65	2	2

Calculite 1.75" Aperture, 400 Lumen LED

Reflector Finish Multipliers: CCD (1.0) WH (0.95) CCZ (0.88 (est.)) BK (tbd) CCD finish is tested. All other finishes calculated.

Candela Plot

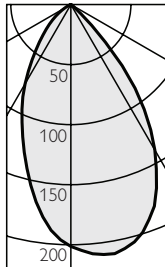


Fixture: C2L04DL30K17R1
Reflector: C2LDLLSCCDP
 (integral linear diffusion lens)
Accessory: none
Beam Angle: 63° x 20°
Spacing Ratio: n/a
CBCP: n/a
Lumens: 314
Watts: 10.7
Efficacy (lm/w): 29.3
CCT: 2979
Cutoff: 75°

Candela Table

Angle	"Intensity (Along)	Intensity (Across)	Lumens
0	660	660	
5	644	574	28
15	562	216	51
25	434	56	42
35	270	14	25
45	83	5	9
55	11	2	2
65	1	1	0

Candela Plot



Fixture: C2L04DL30K17R1
Reflector: C2LLWCCDP
 (integral wall wash lens)
Accessory: none
Beam Angle: 66°
Spacing Ratio: 1.0
CBCP: 217
Lumens: 256
Watts: 10.7
Efficacy (lm/w): 23.9
CCT: 2990
Cutoff: 50°

Candela Table

Angle	"Intensity (Along)	Intensity (Across)	Lumens
0	201	201	
5	189	208	9
15	141	205	21
25	96	169	24
35	56	106	19
45	29	24	11
55	12	2	5
65	3	1	1



Philips Lightolier
 e: lol.webmaster@philips.com
 t: (508) 679-8131
 w: www.lightolier.com

C2L04 July 13, 2012

Specifications are subject to change without notice.
 © Koninklijke Philips Electronics N.V., 2012. All rights reserved.