



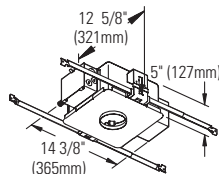
# Calculite® Evolution Open Reflector Downlight **C3MRD**

Page 1 of 2

3" Aperture, MR16 (12V)

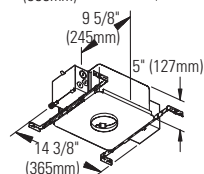
## Non-IC Frame:

**C3LV**  
**C3LVE1**  
**C3LVE2**



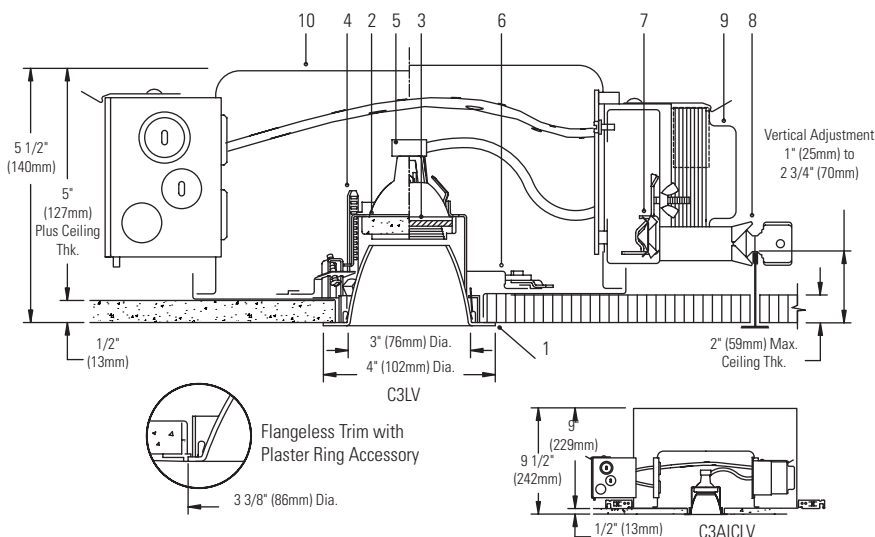
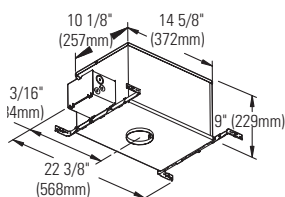
## Non-IC AirSeal Frame:

**C3ALV**  
**C3ALVE1**  
**C3ALVE2**



## IC AirSeal Frame:

**C3AICLV**  
**C3AICLVE1**



**Ceiling Cutout:** 3 1/2" (130mm) Dia.

**For Complete Fixture Order:** Trim Kit + Frame-In Kit. Each Sold Separately.

Trim Kit				Frame-In Kit		Lamp*	
Cone Finish	White Flange	Polished Flange	Flangeless	<b>C3LV</b>	Non-IC	Magnetic 120/277V	42W-65W MR16 (12V)
Clear	<b>C3MRD CLW</b>	<b>C3MRD CLP</b>	<b>C3MRD CLFT</b>	<b>C3LVE1</b>	Non-IC	Electronic 120V	20W-65W MR16 (12V)
Comfort Clear Diffuse	<b>C3MRD CCDW</b>	<b>C3MRD CCDP</b>	<b>C3MRD CCDF</b>	<b>C3LVE2</b>	Non-IC	Electronic 277V	20W-65W MR16 (12V)
Champagne Bronze	<b>C3MRD CCZW</b>	<b>C3MRD CCZP</b>	<b>C3MRD CCZFT</b>	<b>C3ALV</b>	Non-IC AirSeal®	Magnetic 120/277V	42W-65W MR16 (12V)
Gold	<b>C3MRD GDW</b>	<b>C3MRD GDP</b>	<b>C3MRD GDFT</b>	<b>C3ALVE1</b>	Non-IC AirSeal®	Electronic 120V	20W-65W MR16 (12V)
Matte White	<b>C3MRD WHW</b>	N/A	<b>C3MRD WHFT</b>	<b>C3ALVE2</b>	Non-IC AirSeal®	Electronic 277V	20W-65W MR16 (12V)
Specular Black	<b>C3MRD BKW</b>	<b>C3MRD BKP</b>	<b>C3MRD BKFT</b>	<b>C3AICLV</b>	IC AirSeal®	Magnetic 120V	20W-50W MR16 (12V)
				<b>C3AICLVE1</b>	IC AirSeal®	Electronic 120V	20W-50W MR16 (12V)

**Note:** Magnetic not recommended for residential or noise sensitive areas.

## Features

- Trim Kit Aperture Cone:** Low brightness; 0.040" aluminum, anodized; 50° visual cut-off to lamp and lamp image. Hinged, and snaps on for easy tool-less installation. Self-flange in painted white or aperture matching polished flange. Flangeless trim used with Plaster Trim Ring accessory. Interchangeable with other 3" Evolution trims.
- Lamp Support:** Die-form aluminum with knurled surface for easy gripping during relamping. Spring tension clips hold lamp and lens and allow fast snap-in, snap-out relamping. Matte black finish. Accepts up to two 2" diameter accessories.
- Cover Glass:** High temperature, soft focus lens.
- Thick Ceiling Ready Brackets:** Die-form steel, matte black finish. Adjust trim kit vertically to accommodate up to 2" thick ceiling, lockable.
- Lampholder:** Procelain bi-pin socket. Pre-wired with No.18 AWG Teflon leads.
- Horizontal Adjustment Mechanism:** Built-in ready for adjustable trim, matte black finish.
- Frame Vertical Adjustment Mechanism (C3LV):** Accommodates mounting to virtually any ceiling system using pre-installed mounting bars, or 1/2" EMT tubing (by others). Single locking features secures all adjustments. Alignment holes and markings allow fixture to be pre-set prior to installation. Final adjustment can be made from below inside fixture.
- Mounting Bars (C3LV):** Galvanized steel, 0.048"; pre-installed telescoping bars extend from 20" to 30" long and lock securely into position. Built-in locking tabs provide positive attachment to common T-bar systems. Self-centering feature simplified installation in 24" O.C. grid systems. Attaches to steel or wood joists without accessories.
- Transformer:** Replaceable from below. Magnetic: 120V/277V 60 Hz. dual-voltage, core & coil. **Note:** Magnetic not recommended for residential or noise sensitive areas. Electronic: 120V or 277V 50/60 Hz., regulated lamp voltage, HPF, EMI and circuit protections, thermal auto-reset, quiet operation.

**10. Frame-In Kit:** See Frame-In Kit specification sheets for more information.

Non-IC and Non-IC AirSeal - Insulation must be kept 3" away from any parts of the luminaire and must not be placed above luminaire in a manner which will entrap heat. IC AirSeal - Luminaire may be in direct contact with thermal insulation.

## Options and Accessories

**2" dia. Color Filters/Specialty filters:** See ADF2/AF2 specification sheets

**2" Dia. Louver:** AL2HC

**Plaster Trim Ring (use with flangeless trim):** CA3FMR

**Chicago Plenum:** Consult Factory

## Labels

U.L. (Suitable For Damp Locations), I.B.E.W.

\*Lamp wattage restriction for Non-IC: 65W for up to 1" thick ceiling, 50W for ceiling thickness greater than 1" (up to 2").

Job Information	Type:
<b>Job Name:</b>	
<b>Cat. No.:</b>	
<b>Lamp(s):</b>	
<b>Notes:</b>	

**Lightolier** a Genlyte company www.lightolier.com  
631 Airport Road, Fall River, MA 02720 • (508) 679-8131 • Fax (508) 674-4710  
We reserve the right to change details of design, materials and finish.  
© 2011 Genlyte Group LLC • F0711

**LIGHTOLIER**



# Calculite® Evolution Open Reflector Downlight **C3MRD**

Page 2 of 2

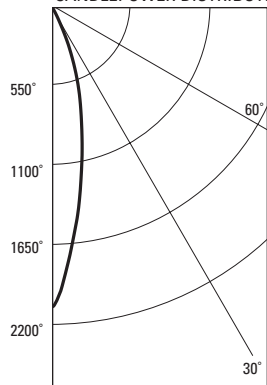
3" Aperture, MR16 (12V)

## 37W MR16 IR - 40° FLOOD

SYLVANIA HALOGEN LAMP, LUMEN RATING = 840 LMS, 120V ELECTRONIC TRANSFORMER

CL  
Reflector  
Finish

### CANDLEPOWER DISTRIBUTION



\*\* EFFICIENCY = 68.7% \*\*  
SC = .4

### ANGLE LUMENS MEAN CP

ANGLE	LUMENS	MEAN CP
0	2084	159
5	1685	
10	1228	
15	839	245
20	543	
25	280	140
30	107	
35	40	31
40	10	
45	0	2
50	0	0
55	0	0
60	0	0
65	0	0
70	0	0
75	0	0
80	0	0
85	0	0
90	0	0

### LUMINANCE SUMMARY CD. / SQ. M.

ANGLE	MEAN CD/SQ M
45	0
55	0
65	0
75	0
85	0

### ZONAL LUMENS AND PERCENTAGES

ZONE	LUMENS	% LAMP	% LUMINAIRE
0-30	543	64.75	94.30
0-40	574	68.44	99.67
0-60	576	68.67	100.00
0-90	576	68.67	100.00
40-90	1	0.23	0.33
60-90	0	0.00	0.00
90-180	0	0.00	0.00
0-180	576	68.67	100.00

### Coefficients of Utilization

CEILING	80%	70%	50%	30%	
WALL	70	50	30	10	0
RCR	Zonal Cavity Method - Effective Floor Cavity Reflectance = 20%				
0	.82	.82	.82	.82	.69
1	.80	.78	.77	.76	.67
2	.77	.75	.74	.72	.66
3	.75	.73	.71	.69	.65
4	.74	.71	.68	.67	.63
5	.72	.68	.66	.64	.62
6	.70	.67	.64	.63	.61
7	.68	.65	.62	.61	.59
8	.67	.63	.61	.59	.58
9	.65	.61	.59	.57	.56
10	.64	.60	.58	.56	.55

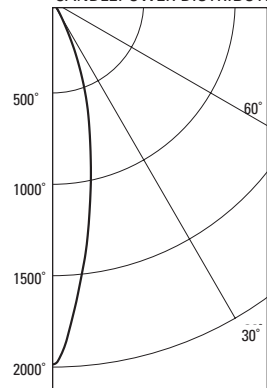
LUMINAIRE INPUT WATTS = 38

## 50W MR16 IR - 40° FLOOD

GE HALOGEN LAMP, LUMEN RATING = 800 LMS, 120V ELECTRONIC TRANSFORMER

CL  
Reflector  
Finish

### CANDLEPOWER DISTRIBUTION



\*\* EFFICIENCY = 68.7% \*\*  
SC = .4

### ANGLE LUMENS MEAN CP

ANGLE	LUMENS	MEAN CP
0	1985	152
5	1605	
10	1170	
15	799	233
20	518	
25	266	133
30	102	
35	38	30
40	9	
45	0	2
50	0	0
55	0	0
60	0	0
65	0	0
70	0	0
75	0	0
80	0	0
85	0	0
90	0	0

### LUMINANCE SUMMARY CD. / SQ. M.

ANGLE	MEAN CD/SQ M
45	0
55	0
65	0
75	0
85	0

### ZONAL LUMENS AND PERCENTAGES

ZONE	LUMENS	% LAMP	% LUMINAIRE
0-30	518	64.75	94.30
0-40	547	68.44	99.67
0-60	549	68.67	100.00
0-90	549	68.67	100.00
40-90	1	0.23	0.33
60-90	0	0.00	0.00
90-180	0	0.00	0.00
0-180	549	68.67	100.00

### Coefficients of Utilization

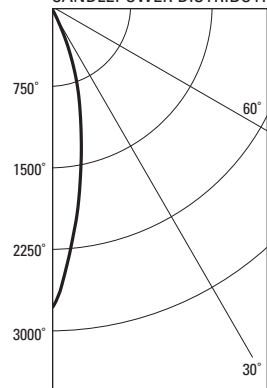
CEILING	80%	70%	50%	30%	
WALL	70	50	30	10	0
RCR	Zonal Cavity Method - Effective Floor Cavity Reflectance = 20%				
0	.82	.82	.82	.82	.69
1	.80	.78	.77	.76	.67
2	.77	.75	.74	.72	.66
3	.75	.73	.71	.69	.65
4	.74	.71	.68	.67	.63
5	.72	.68	.66	.64	.62
6	.70	.67	.64	.63	.61
7	.68	.65	.62	.61	.59
8	.67	.63	.61	.59	.58
9	.65	.61	.59	.57	.56
10	.64	.60	.58	.56	.55

LUMINAIRE INPUT WATTS = 51

## 50W MR16 IR - 40° FLOOD

SYLVANIA HALOGEN LAMP, LUMEN RATING = 1125 LMS, 120V ELECTRONIC TRANSFORMER

### CANDLEPOWER DISTRIBUTION



\*\* EFFICIENCY = 68.8% \*\*  
SC = .4

### ANGLE LUMENS MEAN CP

ANGLE	LUMENS	MEAN CP
0	2792	214
5	2258	
10	1646	
15	1125	328
20	729	
25	375	188
30	144	
35	55	42
40	14	
45	0	3
50	0	0
55	0	0
60	0	0
65	0	0
70	0	0
75	0	0
80	0	0
85	0	0
90	0	0

### LUMINANCE SUMMARY CD. / SQ. M.

ANGLE	MEAN CD/SQ M
45	0
55	0
65	0
75	0
85	0

### ZONAL LUMENS AND PERCENTAGES

ZONE	LUMENS	% LAMP	% LUMINAIRE
0-30	729	64.82	94.21
0-40	771	68.56	99.65
0-60	774	68.80	100.00
0-90	774	68.80	100.00
40-90	2	0.24	0.35
60-90	0	0.00	0.00
90-180	0	0.00	0.00
0-180	774	68.80	100.00

### Coefficients of Utilization

CEILING	80%	70%	50%	30%	
WALL	70	50	30	10	0
RCR	Zonal Cavity Method - Effective Floor Cavity Reflectance = 20%				
0	.82	.82	.82	.82	.69
1	.80	.78	.77	.76	.67
2	.77	.75	.74	.72	.66
3	.75	.73	.71	.69	.65
4	.74	.71	.68	.67	.63
5	.72	.68	.66	.64	.62
6	.70	.67	.64	.63	.61
7	.68	.65	.62	.61	.59
8	.67	.63	.61	.59	.58
9	.65	.61	.59	.57	.56
10	.64	.60	.58	.56	.55

LUMINAIRE INPUT WATTS = 51

## Job Information

## Type:

Lightolier a Genlyte company

www.lightolier.com

631 Airport Road, Fall River, MA 02720 • (508) 679-8131 • Fax (508) 674-4710

We reserve the right to change details of design, materials and finish.

© 2011 Genlyte Group LLC • F0711

**LIGHTOLIER**