



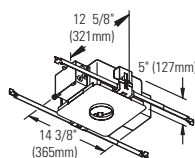
Calculite® Evolution Pinhole Adjustable Accent **C3MRPA**

Non-IC Frame:

C3LV

C3LVE1

C3LVE2

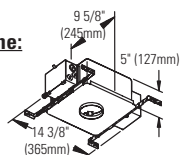


Non-IC AirSeal Frame:

C3ALV

C3ALVE1

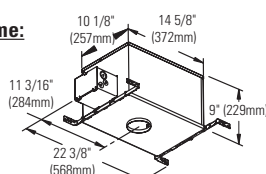
C3ALVE2



IC AirSeal Frame:

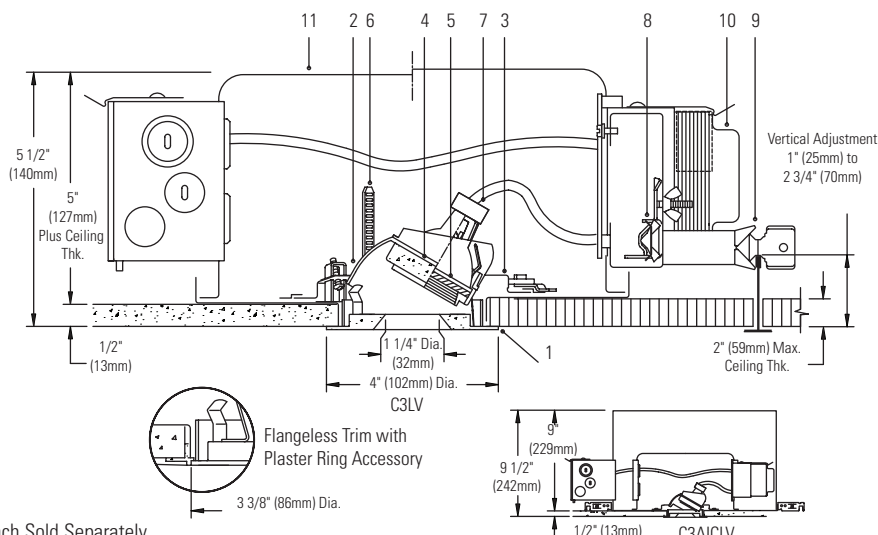
C3AICLV

C3ALCLVE1



Ceiling Cutout: 3 1/2" (130mm) Dia.

For Complete Fixture Order: Trim Kit + Frame-In Kit. Each Sold Separately.



Trim Kit			Frame-In Kit		Lamp*	
Baffle Finish	Painted White	Trim Plate Satin Aluminum	Flangeless	C3LV Non-IC	Magnetic 120/277V	42W-65W MR16 (12V)
Matte White	C3MRPA WH	NA	C3MRPA WHFT	C3LVE1 Non-IC	Electronic 120V	20W-65W MR16 (12V)
Matte Black	C3MRPA BK	NA	C3MRPA BKFT	C3LVE2 Non-IC	Electronic 277V	20W-65W MR16 (12V)
Satin Aluminum	NA	C3MRPA SA	C3MRPA SAFT	C3ALV Non-IC AirSeal®	Magnetic 120/277V	42W-65W MR16 (12V)
				C3ALVE1 Non-IC AirSeal®	Electronic 120V	20W-65W MR16 (12V)
				C3ALVE2 Non-IC AirSeal®	Electronic 277V	20W-65W MR16 (12V)
				C3AICLV IC AirSeal®	Magnetic 120V	20W-50W MR16 (12V)
				C3AICLVE1 IC AirSeal®	Electronic 120V	20W-50W MR16 (12V)t

Note: Magnetic not recommended for residential or noise sensitive areas.

Features

- Trim Kit Baffle/Trim Plate :** One piece machined aluminum, sharp details for clean look. 1 1/4" dia. miniature baffle and built-in aperture shield minimize and blocks view into fixture. Keyed to lamp support assembly for true aiming of lamp to prevent incorrect installation of cone. Hinged, and snaps on for easy tool-less installation. Trim plate in painted white or anodized satin aluminum. Flangeless trim uses Plaster Trim Ring accessory. Interchangeable with other 3" Evolution trims.
- Trim Kit Vertical Adjustment Mechanism:** Die-cast aluminum. Built-in aperture shield blocks view into fixture. Provides 0° - 35° vertical tilt up to 1" thick ceiling, less in thicker ceilings; lockable 25° maximum tilt in ceilings 1.25" - 2" thick. Patented EZ-Aim Helical Drive System provides fast and accurate hot aiming with Philips screwdriver.
- Horizontal Adjustment Mechanism:** Die-form steel ring, matte black finish. Provides 362° horizontal stop, lockable with Philips screwdriver.
- Lamp Support:** Die-form aluminum with knurled surface for easy gripping during relamping. Spring tension clips hold lamp and lens and allow fast snap-in, snap-out relamping. Matte black finish. Accepts one 2" dia. accessory.
- Cover Glass:** High temperature, soft focus lens.
- Thick Ceiling Ready Brackets:** Die-form steel, matte black finish. Adjust trim kit vertically to accommodate up to 2" thick ceiling, lockable.
- Lampholder:** Porcelain bi-pin socket. Pre-wired with No.18 AWG Teflon leads.
- Frame Vertical Adjustment Mechanism (C3LV):** Accommodates mounting to virtually any ceiling system using pre-installed mounting bars, or 1/2" EMT tubing (by others). Single locking features secures all adjustments. Alignment holes and markings allow fixture to be pre-set prior to installation. Final adjustment can be made from below inside fixture.
- Mounting Bars (C3LV):** Galvanized steel, 0.048"; pre-installed telescoping bars extend from 20" to 30" long and lock securely into position. Built-in locking tabs provide positive attachment to common T-bar systems. Self-centering feature simplified installation in 24" O.C. grid systems. Attaches to steel or wood joists without accessories.
- Transformer:** Replaceable from below. Magnetic: 120V/277V 60 Hz. dual-voltage, core & coil. Note: Magnetic not recommended for residential or

noise sensitive areas. Electronic: 120V or 277V 50/60 Hz., regulated lamp voltage, HPF, EMI and circuit protections, thermal auto-reset, quiet operation.

11. Frame-In Kit: See Frame-In Kit specification sheets for more information.

Non-IC and Non-IC AirSeal® - Insulation must be kept 3" away from any parts of the luminaire and must not be placed above luminaire in a manner which will entrap heat.

IC AirSeal® - Luminaire may be in direct contact with thermal insulation.

Labels

U.L. (Suitable For Damp Locations), I.B.E.W.; U.S. & Foreign Patents Pending

* Lamp wattage restriction for Non-IC: 65W for up to 1" thick ceiling, 50W for ceiling thickness greater than 1" (up to 2").

Options and Accessories

2" dia. Color Filters/Specialty filters: See ADF2/AF2 specification sheets

2" dia. Louver: AL2HC

Plaster Trim Ring (use with flangeless trim): CA3FMR

Chicago Plenum: Consult Factory

Job Information

Type:

Job Name:

Cat. No.:

Lamp(s):

Notes:

Lightolier a Genlyte company

631 Airport Road, Fall River, MA 02720 • (508) 679-8131 • Fax (508) 674-4710

We reserve the right to change details of design, materials and finish.

© 2007 Genlyte Group LLC • E1107

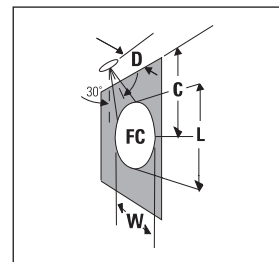
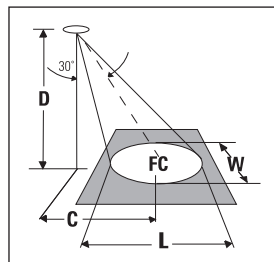
www.lightolier.com

LIGHTOLIER®

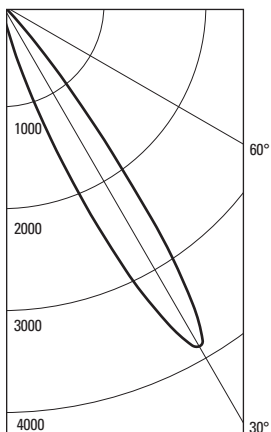


Calculite® Evolution Pinhole Adjustable Accent **C3MRPA**

(FC) is initial footcandles at center of beam. Beam length (L) and beam width (W) are to where the candlepower is reduced to 50% of the center beam candlepower. (C) is the distance to the center of the beam. Footcandles are based on photometry with luminaire, with lamp aimed at 30° from vertical.



CANDLEPOWER DISTRIBUTION



37W MR16 (12V) IR - 10° Spot

ANGLE	WALL	AIMED 30° TOWARD WALL
0	92	
5	113	REFLECTOR TRIM: C3MRPABK
10	150	SYLVANIA HALOGEN LAMP
15	465	120V ELECTRONIC TRANSFORMER
20	1397	LUMEN RATING = 840 LMS
25	2873	CBCP= 3869 cd
30	3869	BEAM ANGLE = 15°
35	2549	
40	796	CERTIFIED TEST REPORT NO. 2740FR
45	150	DATE: Sep 24, 2004
50	40	**TEST-LITE**
55	12	
60	3	
65	0	
70	0	
75	0	
80	0	
85	0	
90	0	

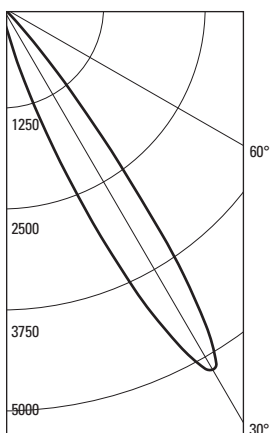
30° Aiming Angle
Horizontal Surface

D	C	FC	L	W
6'	3.5'	70	2.1'	1.8'
8'	4.6'	39	2.8'	2.4'
10'	5.8'	25	3.5'	3.0'
12'	6.9'	17	4.2'	3.6'
15'	8.7'	11	5.3'	4.6'

30° Aiming Angle
Vertical Surface

D	C	FC	L	W
2'	3.5'	146	2.2'	1.1'
3'	5.2'	65	3.3'	1.6'
4'	6.9'	37	4.4'	2.1'
6'	10.4'	16	6.7'	3.2'
8'	13.9'	9	8.9'	4.2'

CANDLEPOWER DISTRIBUTION



50W MR16 (12V) - 10° Spot

ANGLE	WALL	AIMED 30° TOWARD WALL
0	124	
5	152	REFLECTOR TRIM: C3MRPABK
10	202	SYLVANIA HALOGEN LAMP
15	624	120V ELECTRONIC TRANSFORMER
20	1872	LUMEN RATING = 1125 LMS
25	3849	CBCP= 5183 cd
30	5183	BEAM ANGLE = 15°
35	3414	
40	1066	CERTIFIED TEST REPORT NO. 2718FR
45	202	DATE: Sep 2, 2004
50	55	**TEST-LITE**
55	17	
60	5	
65	0	
70	0	
75	0	
80	0	
85	0	
90	0	

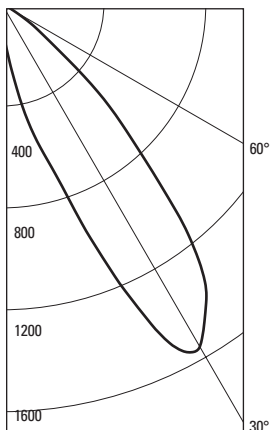
30° Aiming Angle
Horizontal Surface

D	C	FC	L	W
6'	3.5'	94	2.1'	1.8'
8'	4.6'	53	2.8'	2.4'
10'	5.8'	34	3.5'	3.0'
12'	6.9'	23	4.2'	3.6'
15'	8.7'	15	5.3'	4.6'

30° Aiming Angle
Vertical Surface

D	C	FC	L	W
2'	3.5'	195	2.2'	1.1'
3'	5.2'	88	3.3'	1.6'
4'	6.9'	49	4.4'	2.1'
6'	10.4'	22	6.7'	3.2'
8'	13.9'	12	8.9'	4.2'

CANDLEPOWER DISTRIBUTION



50W MR16 (12V) - 25° Narrow Flood

ANGLE	WALL	AIMED 30° TOWARD WALL
0	73	
5	154	REFLECTOR TRIM: C3MRPABK
10	339	SYLVANIA HALOGEN LAMP
15	583	120V ELECTRONIC TRANSFORMER
20	915	LUMEN RATING = 800 LMS
25	1386	CBCP= 1553 cd
30	1553	BEAM ANGLE = 26°
35	1399	
40	1069	CERTIFIED TEST REPORT NO. 2719FR
45	665	DATE: Oct 27, 2004
50	336	**TEST-LITE**
55	160	
60	58	
65	6	
70	0	
75	0	
80	0	
85	0	
90	0	

30° Aiming Angle
Horizontal Surface

D	C	FC	L	W
6'	3.5'	29	3.8'	3.2'
8'	4.6'	17	5.0'	4.3'
10'	5.8'	11	6.3'	5.3'
12'	6.9'	7	7.5'	6.4'
15'	8.7'	5	9.4'	8.0'

30° Aiming Angle
Vertical Surface

D	C	FC	L	W
2'	3.5'	78	4.4'	1.8'
3'	5.2'	35	6.6'	2.8'
4'	6.9'	20	8.8'	3.7'
6'	10.4'	9	13.2'	5.5'
8'	13.9'	5	17.6'	7.4'

Job Information

Type:

Lightolier a Genlyte company

www.lightolier.com

631 Airport Road, Fall River, MA 02720 • (508) 679-8131 • Fax (508) 674-4710

We reserve the right to change details of design, materials and finish.

© 2007 Genlyte Group LLC • E1107

LIGHTOLIER®