

# TZ63

one or two T5 or T5HO lamps

or one or two T8 lamps

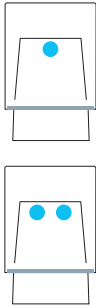
Compatible with  
Armstrong® TechZone™ Ceiling System,  
USG LOGIX™ Ceiling System  
and other similar systems.

Linear Lighting

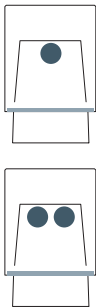


# TZ63

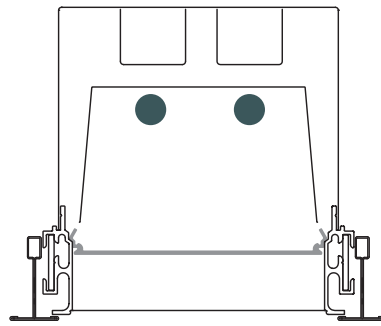
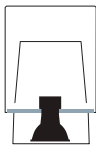
## T5 options



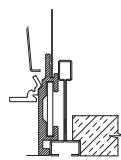
## T8 options



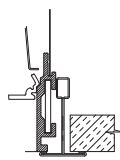
## MR16 options



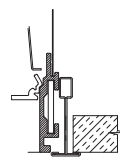
TZ63 grid mount  
5 1/2" H. x 5 1/2" W., 5" aperture



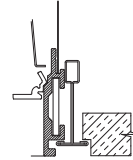
**SS**  
Donn Fineline



**G**  
1" T-bar (4 3/4" H)



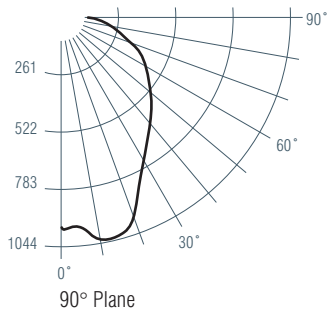
**NFG**  
3/16" T-bar (4 3/4" H)



**TNFG**  
3/16" Tegular Tee

For design use only. Not for construction. See [www.linearltg.com](http://www.linearltg.com) for engineering drawings specific to job.

- Compatible with Armstrong® TechZone™ Ceiling System, USG LOGIX™ Ceiling System and other similar systems.
- 1 1/2" deep regressed lens
- 5" aperture
- 1 or 2 T5/T5HO lamps or 1 or 2 T8 lamps
- Factory pre-wired
- UL/CUL labels
- Fixture weight: 22 lbs. approx.



TZ63-D-2-ET5-SBL

Efficiency: 39.2

Max. candlepower at 15°: 1044

See [www.linearltg.com](http://www.linearltg.com) for complete photometrics.

Catalog No.	Dir.	Lamps	Ballast	Voltage	Shielding	Mounting	Color	Add'l options	Row length
<b>TZ63</b>	<b>D</b>	-	-	-	-	-	<b>BW</b>	-	<b>4</b>
Fixture	Lamps & Electrical Options				Mechanical & Aesthetic Options			Add'l	Feet
	Direction	<b>Direct</b>			Shielding	<b>SBL</b> Sandblasted Acrylic See tab for lens illustrations		<b>NO</b> No Option	Fixture lengths <b>2', 3', 4', 5'</b>
	Fluorescents	<b>1 or 2 T5/T5HO</b> <b>1 or 2 T8</b>			Mounting	<b>G</b> 1" T-bar		<b>CB</b> Checkerboard Circuit A or B	
	MR16s	<b>MR16#</b> (2 per fixture) Available with 120V only.				<b>NFG</b> 3/16" T-bar		<b>EC</b> Checkerboard Circuit "C" Emergency Circuit	
	Ballast	<b>ET5</b> Electronic T5 <b>ET5HO</b> High-Output T5 <b>ET8</b> Electronic T8				<b>SS</b> Donn Fineline		<b>ED</b> Electronic Dimming*	
	Voltage	<b>120 277</b> <b>347</b>			Color	<b>TNFG</b> 3/16" Tegular Tee		<b>EM</b> Emergency Ballast**	
								<b>FU</b> Fusing	
								<b>LO</b> Louver Overlay	
								<b>LS</b> LutronEcoSys Sensor Feed	
								<b>NL</b> Night Light	
								<b>PBPS</b> Premium Ballast Program Start	
								<b>SC</b> Separate Circuits	
								<b>WP</b> 6ft Long Whip	
								<b>PBIS</b> Premium Ballast Instart Start	
								<b>RFI</b> Radio Frequency Interference Suppressor	

\*Dimming ballasts may not be available for all T5/T5HO lamp lengths. Consult factory. † ISB10 and PSB10 available with T8 only. †† Line-voltage 120V MR16 from SLI/Power Lighting Products

\*\* EM packs may not be available for all T5/T5HO lamp lengths. Consult factory. ‡ 2' available without MR16 only

**Linear Lighting Corp.**

31-30 Hunters Point Ave., Long Island City, NY 11101 ©7/08  
718-361-7552 Fax 718-937-2747 Web: [www.linearltg.com](http://www.linearltg.com)