

FEATURES & SPECIFICATIONS

INTENDED USE — Built on the compact, low-profile Z strip channel, this LED strip offers long maintenance-free life, several color temperatures, lumen outputs and lengths. Ideal for new construction and retrofit applications in T8 lengths. Ideal for uplight and downlight in commercial, retail, manufacturing, warehouse, cove and display applications. **Certain airborne contaminants can diminish integrity of acrylic.** [Click here for Acrylic Environmental Compatibility table for suitable uses.](#)

CONSTRUCTION — Compact-design channel and cover are formed from code-gauge cold-rolled steel. Easy to install row aligner included for continuous row mounting.

Finish: Paint options include high-gloss, baked white enamel (WH), galvanized (GALV), matte black (MB) and smoke gray (SKGY). Five-stage iron phosphate pre-treatment ensures superior paint adhesion and rust resistance.

OPTICS — Standard diffuse snap on/snap off lens eliminates pixels, improves uniformity and minimizes glare. L/LENS option available.

ELECTRICAL — Utilizes high-output LEDs integrated on a two-layer circuit board, ensuring cool-running operation. Internal pluggable wiring harness prevents wiring errors. Electronic LED driver is rated for 75 input watts maximum (see Operational Data on page two for actual wattage consumption), **multi-volt input and 0-10V dimming standard.** This fixture is designed to withstand a maximum line surge of 1.5kV at 0.75kA combination wave for indoor locations, for applications requiring higher level of protection additional surge protection must be provided.

LEDs provide 83 CRI at 3000 K, 3500 K, 4000 K or 5000 K.

Lumen output up to 2,000 lumens per foot. In 86°F (30°C) ambient environments, L70 is predicted to be 100,000+ hours, L85 at 65,000 hours. Luminaire should be installed in applications where ambient temperatures do not exceed 86°F (30°C). Ambient temperatures that exceed 86°F (30°C) will result in reduced life and will void warranty.

INSTALLATION — Tool-less channel cover for easy installation.

Fixture may be surface, pendant or stem mounted. Three-point aligner locks in place for easy continuous row mounting.

LISTINGS — UL Listed. CSA certified to US and Canadian safety standards. For use in damp locations between -4°F (-20°C) and 86°F (30°C).

DesignLights Consortium® (DLC) qualified product. Not all versions of this product may be DLC qualified. Please check the DLC Qualified Products List at www.designlights.org to confirm which versions are qualified.

WARRANTY — 5-year limited warranty. Complete warranty terms located at www.acuitybrands.com/CustomerResources/Terms_and_conditions.aspx

Actual performance may differ as a result of end-user environment and application.

Actual wattage may differ by +/- 5% when operating between 120-277V +/- 10%.

Note: Specifications subject to change without notice.

Catalog Number
Notes
Type



LED Striplight

ZL1N

24", 48" and 96" Lengths



ORDERING INFORMATION

Lead times will vary depending on options selected. Consult with your sales representative.

Example: ZL1N L48 3000LM FST MVOLT 40K 80CRI WH

Series	Length	Nominal lumens ¹	Diffuser	Voltage	Color temperature	Color rendering index	Options	Paint finish
ZL1N LED striplight	L24 24"	3000LM 3,000 lumens	FST Snap on frosted, diffuse L/LENS No diffuser	MVOLT 120-277V HVOLT 347-480V ²	40K 4000 K 30K 3000 K 35K 3500 K 50K 5000 K	80CRI 80 CRI	PLR Plug-in wiring ³	WH White
	L46 46"	3000LM 3,000 lumens						GALV Galvanized
	L48 48"	5000LM 5,000 lumens						MB Matte black
		7000LM 7,000 lumens						SKGY Smoke gray
TZL1N LED striplight	L92 92"	6000LM 6,000 lumens						
	L96 96"	10000LM 10,000 lumens						
		14000LM 14,000 lumens						

Accessories: Order as separate catalog number.

HC36	Hanger chain, 36"	ZSPRG	For 15/16" T-grid only
ZACVH	Aircraft cable with hook	WGZ24	24" wireguard, white
LSXR	Sensor Switch® LSXR occupancy sensor ²	WGZ48	48" wireguard, white ⁴

EMERGENCY OPTIONS⁵

Consider EAC ISSM 125 or EAC ISSM 375

Notes

- See Operational Data on page 2 for actual lumens.
- Not available with L24, 24" fixture.
- See ordering information on page 3.
- Order 2 for tandem double length fixtures (TZL1N).
- See ordering information on page 4.

ZL1N LED Striplight

OPERATIONAL DATA								
	Nominal lumen package	Length (inches)	Delivered lumens 3000 K CCT @ 77°F (25°C) ambient temperature	Delivered lumens 3500 K CCT @ 77°F (25°C) ambient temperature	Delivered lumens 4000 K CCT @ 77°F (25°C) ambient temperature	Delivered lumens 5000 K CCT @ 77°F (25°C) ambient temperature	Wattage @ 120V/277V	Comparable light source
Lensed	3,000LM	24	2,805	2,921	3,177	3,400	34W/32W	1-lamp 32W T8, 1-lamp 54W T5HO, 50W HID
	3,000LM	46 or 48	2,532	2,636	2,834	3,068	32W/31W	1-lamp 32W T8, 1-lamp 54W T5HO, 50W HID
	5,000LM	46 or 48	3,923	4,085	4,391	4,754	42W/41W	2-lamp 32W T8, 1-lamp 54W T5HO, 70W HID
	7,000LM	46 or 48	5,914	6,158	6,619	7,231	72W/70W	3-lamp 32W T8, 2-lamp 54W T5HO, 100W HID
	6,000LM	92 to 96	5,064	5,273	5,668	6,136	64W/62W	3-lamp 32W T8, 2-lamp 54W T5HO, 100W HID
	10,000LM	92 to 96	7,846	8,170	8,782	9,508	84W/82W	4-lamp 32W T8, 2-lamp 54W T5HO, 100W HID
	14,000LM	92 to 96	11,828	12,316	13,239	14,462	144W/140W	4-lamp 32W T8, 3-lamp 54W T5HO, 150W HID
Unlensed	3,000LM	24	3,165	3,295	3,582	3,835	34W/32W	1-lamp 32W T8, 1-lamp 54W T5HO, 50W HID
	3,000LM	46 or 48	2,865	2,983	3,207	3,472	32W/31W	1-lamp 32W T8, 1-lamp 54W T5HO, 50W HID
	5,000LM	46 or 48	4,439	4,622	4,968	5,379	42W/41W	2-lamp 32W T8, 1-lamp 54W T5HO, 70W HID
	7,000LM	46 or 48	6,737	7,015	7,541	8,164	72W/70W	3-lamp 32W T8, 2-lamp 54W T5HO, 100W HID
	6,000LM	92 to 96	5,730	5,966	6,413	6,944	64W/62W	3-lamp 32W T8, 2-lamp 54W T5HO, 100W HID
	10,000LM	92 to 96	8,878	9,244	9,937	10,759	84W/82W	4-lamp 32W T8, 2-lamp 54W T5HO, 100W HID
	14,000LM	92 to 96	13,474	14,031	15,082	16,329	144W/140W	4-lamp 32W T8, 3-lamp 54W T5HO, 150W HID

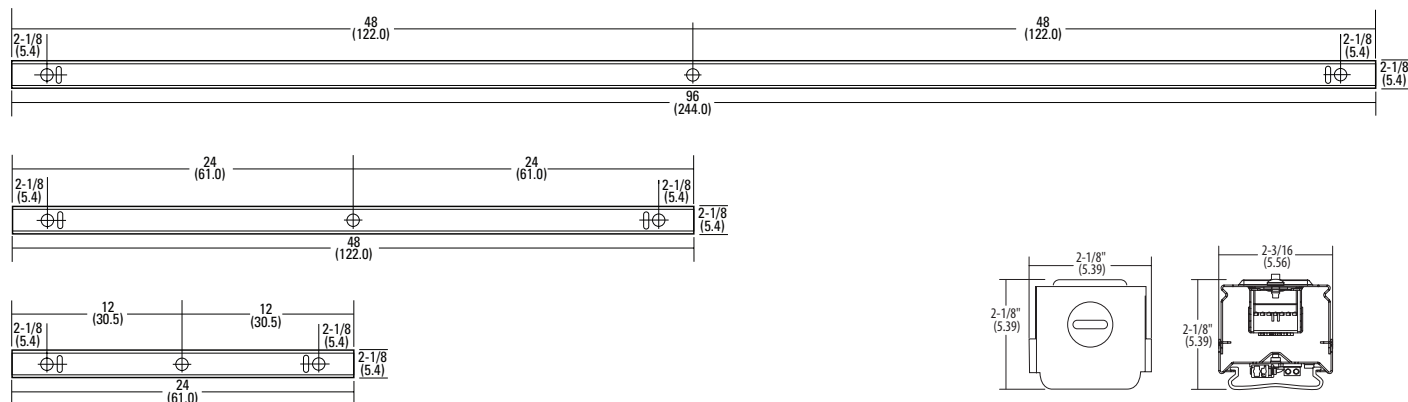
PROJECTED LUMEN MAINTENANCE								
Operating hours	0	10,000	20,000	30,000	40,000	50,000	60,000	100,000
Lumen maintenance factor	1	0.9678	0.9454	0.9235	0.9021	0.8812	0.8605	0.7839

Based on incomplete LM-80 data. Update expected Q1 2014.

DIMENSIONS

All dimensions are shown in inches (centimeters) unless otherwise noted.

Specifications subject to change without notice.



PHOTOMETRICS

Please see www.lithonia.com.

PRODUCT INFORMATION

Advanced plug-in system with three-circuit capability. Available on industrial and strip products and a variety of architectural products mounted in continuous rows. 1, 2, 3 and 4-lamp fixtures. PLR22 (2-circuit) and PLR33 (3-circuit) crossover harness switches hot circuit serving next fixture in row. Reduces fixture types on job for alternating circuit applications (see example below.)

Easy one-step installation, saves up to 35% on labor costs. Expanded switching flexibility helps save energy.

Rows can be 50% longer with two-circuit systems. Polarized, lock-together nylon connectors prevent miswiring in the field. #12 THHN conductor, rated 600V, 90°C. White neutral wire included. Grounding accomplished by fixture in-row connectors.

CSA certified systems available with up to 2 circuits. G ground required.

Note: Specifications subject to change without notice.



PLR

Advanced 3-Circuit Plug-In

ORDERING INFORMATION

Lead times will vary depending on options selected. Consult with your sales representative.

Series	Number of hot wires	Branch circuits	Ground
PLR	(blank) Not required for 22 or 33	<u>Circuits to which ballast is connected</u> B Red wire	(blank) No ground in PLR
PLR22	1 Black	(blank) Not required for 22 or 33 C Blue wire	G Ground. Maximum 2 circuits
PLR33	2 Black and red	A Black wire	
	3 Black, red and blue		

Typical Applications

- Multiple-circuit and single-circuit for longer continuous rows
- Multiple-circuit with alternating fixtures on separate circuits, 2-circuit (PLR 22) and 3-circuit (PLR 33)
- Multiple circuit with night-lights located along row as desired

TYPICAL APPLICATIONS										
PLR 3 C	PLR 3 C	PLR 3 C	PLR 3 C	PLR 2 B	PLR 2 B	PLR 2 B	PLR 2 B	PLR 1	PLR 1	PLR 1
(All PLR22)										
Circuit A	Circuit B	Circuit A	Circuit B	Circuit A	Circuit B	Circuit A	Circuit B	Circuit A	Circuit B	Circuit A
(All PLR33)										
Circuit A	Circuit B	Circuit C	Circuit A	Circuit B	Circuit C	Circuit A	Circuit B	Circuit C	Circuit A	Circuit B
PLR 3 A	PLR 3 A	PLR 3 A	PLR 3 C	PLR 3 B	PLR 3 B	PLR 3 B	PLR 3 C	PLR 3 A	PLR 3 A	PLR 3 A

PRODUCT INFORMATION

A standard occupancy time delay is also present to ensure lights turn off (once minimum on timer has also elapsed) if no occupancy is detected.

This timer is factory set at 10 minutes to promote energy savings, but is adjustable between 30 seconds and 30 minutes. These adjustments may be done through the unit's push-button.

FEATURES

- Four interchangeable lenses - high mount 360°, low mount 360°, high mount aisleway, and small motion 360°.
- Integrated mounting bracket drops lens down 3" from chase nipple - no bracket accessory required.
- 100% digital PIR detection - provides excellent RF immunity

Note: Specifications subject to change without notice.



LSXR

Single Relay

sensorswitch

ORDERING INFORMATION

Lead times will vary depending on options selected. Consult with your sales representative.

Example: LSXR 10 ADC HVOLT 30M

LSXR		Lens option				Dimming/photocell	
Series	Passive Infrared Indoor Occupancy Sensor	(blank)	No lens	610	High and low mount 360°	(blank)	None
		6	High mount, 360°	650	High mount 360° and aisleway	HL	High/low occupancy operation
		10	Low mount, 360°	3PK	High and low mount 360° and aisleway	P	Switching photocell (on/off)
		50	High mount aisleway	4PK	All lenses	ADC	Dimming and switching photocell
		9	Small motion, 360°			ANL	Dimming and switching photocell with high/low occupancy operation

Voltage	Max dim level	Min dim level	Lead length	Temp humidity	Default time delay
(blank) 120-277 VAC (MVOLT)	(blank) 10 VDC	(blank) Minimum dimming level of ballast	(blank) 14"	(blank) None	(blank) 10 minutes (with minimum 15 minutes on time)
HVOLT 347-480 VAC	9H 9 VDC	1V 1 VDC	42L 42"	LT Low temperature	5M 5 minutes (LED only)
	8H 8 VDC	2V 2 VDC			15M 15 minutes
	7H 7 VDC	3V 3 VDC			20M 20 minutes
		4V 4 VDC			30M 30 minutes
		5V 5 VDC			
		6V 6 VDC			

For additional information see www.lithonia.com

FEATURES & SPECIFICATIONS

INTENDED USE — Automatic standby AC power system for LED, incandescent and fluorescent emergency lighting systems, including fixtures with line dimmable fluorescent ballast.

CONSTRUCTION — NEMA Type 1 cabinet 16-gauge steel housing.

Status indicator: Three LED indicators display utility present, charger and inverter running.

Cooling: 375W model features forced air during emergency mode.

ELECTRICAL — Dual input and output, 120V or 277V.

Units rated for 125W or 375W provide emergency lighting power for 90 minutes of operation.

Battery: 12V Valve-regulated Lead Acid (VRLA) battery.

INSTALLATION — Line voltage allows for remote mounting of up to 1000 feet.

125W: Available with surface or recess ceiling mounting.

375W: Surface mounting only.

LISTINGS — UL Listed. Meets UL924, NFPA 101 (current life safety code), NEC, OSHA.

WARRANTY — 3-year limited warranty. Complete warranty terms located at www.acuitybrands.com/CustomerResources/Terms_and_conditions.aspx

Note: Specifications subject to change without notice.

EAC ISSM

Compact Interruptible AC Power System



ORDERING INFORMATION

Lead times will vary depending on options selected. Consult with your sales representative.

Example: EAC ISSM 375 120/277 SM

EAC	ISSM		120/277	
Series	System	VA rating	Voltage	Mounting
EAC Emergency AC power system	ISSM Interruptible	125 375 ¹	120/277 Dual input and output 120V or 277V	SM Surface RGM Recess grid ceiling

For additional information see www.lithonia.com

Notes

1 Available surface mount only.

OPTIONS AND ACCESSORIES

The Z Series fixture offers numerous options for almost every electrical and optical component, including a long list of field-installable accessories.

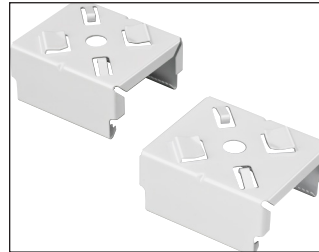


HANGER CHAIN

36" chain with Y hanger.

Order as:

HC36



Z SPRING HANGER

Snap 'n' lock design requires no fasteners and can be used on T-grid ceiling or universal mounting systems.

Order as:

ZSPRG