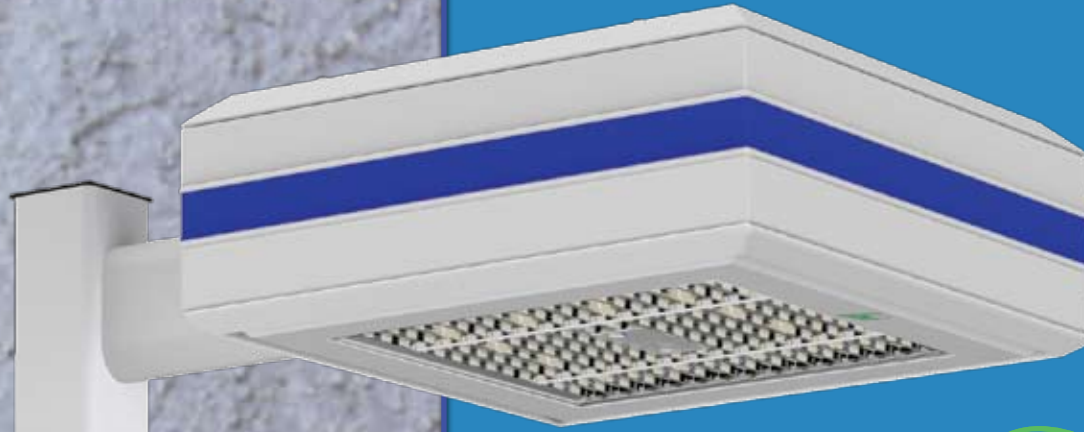


XGB3 LED Area Lighting



Crossover®
GENERATION 3

Marketing Positioning Statement

XGB3 LED Area Lighting couples industry leading LED Crossover technology with the conventional Greenbriar form. Incorporating top access for easy installation and driver access, the XGB3 128 LED replaces up to 400W HID with 180W LED, and the XGB3 176 LED replaces up to 750W HID with 260W LED. Exceptional high-brightness LEDs result in both higher light levels and significant energy savings.

Leading Selling Features

- ▣ SmartTec™ Control Technology – “Industry First”
- ▣ Low Total Cost of Ownership - Quick Payback
- ▣ Outstanding Uniformity & Visual Comfort
- ▣ Leading Selection of Light Output Options
- ▣ Unparalleled Speed & Ease of Installation
- ▣ Exceptional Reliability in an LED Area Light
- ▣ Provides Conventional Styling for any Site



A Company with a *Smart Vision*

SmartTec Control Technology - “Industry First”

Thermal Management

LSI proprietary SmartTec heat dissipation system
Fixture temperature lowered automatically when needed in imperceptible 5% increments until safe operating temperature is reached
Sensors in both the optical unit and driver initiate temperature correction
Finless heat sink design to more effectively dissipate heat over time

Annual Energy & Maintenance Savings

Low Total Cost of Ownership – Quick Payback

\$1,926 savings for (20) XGB3 128 LED 350mA fixtures replacing (20) 250W MH fixtures

\$2,960 savings for (20) XGB3 128 LED 450mA fixtures replacing (20) 400W MH fixtures

\$4,210 savings for (20) XGB3 176 LED 350mA fixtures replacing (20) 575W MH fixtures

\$5,412 savings for (20) XGB3 176 LED 450mA fixtures replacing (20) 750W MH fixtures

Payback Analysis

ROI of 3.96 years for XGB3 176 LED 350mA example above
ROI of 3.10 years for XGB3 176 LED 450mA example above

Clear Flat Optical Grade Tempered Glass Lens

Outstanding Uniformity & Visual Comfort

Superior performance & value through sealed lens, precision reflectors and industry's best LEDs
5 times more impact resistant than standard glass.
Won't discolor, craze or cloud up like acrylic lenses
Cleans easily

Lumen Output

Wide range of lumen outputs available by varying the reflector types, LED quantities and drive currents
Wide lumen range of 10450 to 24920 available, providing a choice of lumen outputs for the customer's specific requirements
Creates a brighter environment at lower light levels

LIGHT OUTPUT - XGB3 128					
# of LEDs		Lumens (Nominal)			Watts
		Type 5	Type FT	Type FTA	
350 mA	128	10490	12710	12730	137
	128	12630	15350	15600	180

LIGHT OUTPUT - XGB3 - 176					
		Lumens (Nominal)			Watts
		Type 3	Type 5	Type FTA	
350 mA	128	14820*	16620	18260	195
	128	20670	20020	21610	260

*Preliminary data

Multitude of Distribution Patterns

Leading Selection of Light Output Options

XGB3 128 LED:

Choice of type 5, FT, FT-L, FT-R, FTA, FTA-L and FTA-R
FTA-L and FTA-R allows for 180° mounting configurations with factory set optics

XGB3 176 LED:

Choice of type 3, 5, FT, FTA
The 176 LED optical unit can be field rotated in 90° increments

By increasing drive currents from 350mA to 450mA, light distribution patterns are enhanced with greater lumen output
Exceptional uniformity with full cutoff creates bright environment at lower light levels
Improved backlight cutoff minimizes light trespass
House side shield available for even more backlight cutoff
Application staff available to determine best distribution pattern
LM79 & LM80 reports available

128 LED Array

137 or 180 watt choice
137W (350mA) is ideal replacement for 250W MH
180W (450mA) is ideal replacement for 400W MH

176 LED Array

195 or 260 watt choice
195W (350mA) is ideal replacement for 575W MH
260W (450mA) is ideal replacement for 750W MH

Color Rendering Index

CRI of 70 facilitates recognition of specific colors of various objects to meet industry standards

Color Temperature

Cool white - 5300K provides bright and pleasing area lighting at reduced foot candle levels

Temperature Range

-40°C to +50°C (-40°F to 122°F)
Suitable for use in a wide range of ambient temperatures
Life expectation based on rated maximum, not on nighttime average

Two Drive Currents

350mA and 450mA available
Expands available solutions for customer specific applications
350mA is the most energy efficient, while higher drive current can be utilized to drive for greater lumen output

Input Voltage

Universal voltage 120V thru 277V (50/60hz input): 347V-480V also available



Unparalleled Speed & Ease of Installation

Mounting

Tethered top-access cover provides ease of installation and allows for easy driver access
Four captive stainless-steel fasteners secure the top-access cover to the housing
Use with standard 5" 2-hole pattern steel round, square and round tapered poles (order round pole plates separately)

Maintenance-Free

Once installed, the XGB3 is virtually maintenance free

Exceptional Reliability in an LED Area Light

American Made

All products designed and manufactured in the U.S.

Environmentally Responsible

With exceptional "green" technology, XGB3 is RoHS compliant
Greater than 80% recyclable by weight



Housing	Superior durability in a die-formed aluminum square housing Excellent surface finishing and dimensional consistency
Weather-tight	Fully enclosed weather tight wet-location housing contains prewired IP68 driver field connections Optical unit rated IP67
Gasketing	Luminaire optical assembly permanently sealed with robotically applied polyurethane All external seals for fasteners, options, etc. are EPDM or silicone rubber for robustness to pressure and temperature changes and environmental, aging and UV resistance Redundant fail-safe seals used in most areas for additional luminaire protection
Finish	LSI's DuraGrip [®] polyester powder coat - resists corrosion and is scratch and ding resistant Withstands extreme weather changes without cracking or peeling. Exhibits excellent durability and resistance to ultraviolet rays
Long-Life	Up to 100,000 hours of expected life equates to 11.4 years burning 24/7 5X the lamp life expectancy of HID Once installed, virtually maintenance free
Protection	IP67 on sealed optical assembly provides total dust ingress protection, temporary liquid submersion protection IP68 on driver provides total dust ingress protection, providing long periods of liquid submersion protection - the highest IP rating available in the industry
Surge Protector	Two-stage surge protection including separate surge protection built into electronic driver Meets IEEE C62.41.2-2002, Scenario 1, Location Category C Prevents damage to fixture due to unexpected "surge" or "swell" in AC Line Voltage
Pressure Stabilizing Vent/Breather	Equalizes pressure in fixture optical unit preventing pressure buildup due to ambient temperature changes, protecting gaskets and seals over the life of the fixture
Warranty	Limited 5-year warranty
Options/Accessories	Button-Type Photocell House side shield Round pole and wall mount plate Terminal block for ease of wiring Decorative radius arm and upsweep bracket

Provides Conventional Styling for any Site

Attractive/clean styling

Performance, energy efficiency and maintenance benefits of LED in a conventional housing design



A Company with a Smart Vision

(513)793-3200

www.lsi-industries.com