

MARK® ARCHITECTURAL LIGHTING



The Slot 6 Series

Slot 6, the most versatile member of the Slot family, offers endless creative possibilities. It also boasts higher efficiencies and lamping flexibility, and it's a perfect fit for Armstrong TechZone™ ceiling systems.

Featuring an optional halogen or metal halide MR16 downlight component, Slot 6 offers not only the ability to integrate point-source lighting with general illumination, but also the ability to utilize the sleek, clean Slot profile for point-source-only illumination. Slot 6 is available with a frosted clear acrylic lens or parabolic baffle.

Type:

Project:

Catalog Number:

DO NOT TYPE HERE. Autopopulated field.

Specification Features

Housing

Nominal 6" x 2', 3', 4', 5', 6' or 8' units fabricated from 20-gauge, cold-rolled steel. Ceiling trim is extruded aluminum. Downlight component (where applicable) is die-cast aluminum.

Finish

Matte white. MR16 trim is matte black (standard) or white.

Reflector

Precision-formed steel; white.

Shielding

Nominal 1/4"-thick frosted clear acrylic with rabbeted ends to prevent light leaks against downlight components. Optional semi-diffuse parabolic baffle, 3/4" high x 2" on center.

Lamps

(1) or (2) T5, T5HO or T8 lamps. (2) MR16 (max. 50W) or MH MR16 (max.

39W) lamps for optional downlight component. All lamps provided by others.

Ballast

Fluorescent and metal halide: Thermally protected Class P energy-saving electronic ballast. MR16: Electronic 12-volt, 120 or 277 as specified.

Mounting

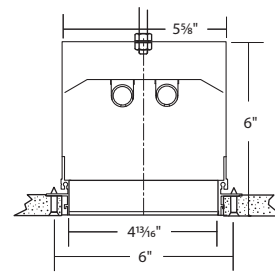
Recessed. Available for sheetrock, 9/16" slot grid or 15/16" inverted tee ceilings, or 9/16" inverted tee. Slot 6 units are compatible with Armstrong TechZone™ ceilings. Consult factory for other ceiling types.

Certification

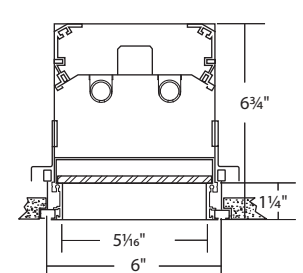
UL Listed, IBEW (Local 3) Union-made in the USA.

Technical Drawings

2T5 GB



STAGGERED W/DF TRIM



Ordering

Example: SL6F 4 DF 2T5 EBIS 120 FA

Series	Length	Downlights ¹	Ceiling type	No. of lamps/Lamp type	Ballast	Voltage	Shielding	Options								
SL6R	Slot 6	2	2'	M	50W MR16	DF	9/16" slot grid or 15/16" inverted tee	Number of lamps	Lamp type	EBPR	Program rapid start (standard)	120	FA	1/4" thick clear frosted acrylic	EMPK	Emergency battery pack
	Regressed	3	3'	MH20 ²	20W MH MR16	DF	9/16" inverted tee	1	T5	EBIS	Instant start	277	FA	1/4" thick clear frosted acrylic	EMPK	Emergency battery pack
SL6F	Slot 6 Flush	4	4'	MH39 ³	39W MH MR 16	TG	9/16" inverted tee grid with tegular files	2	T5HO	EDB	Dimming (specify)	347 ⁵	PB	Semi-diffuse parabolic baffle	WHD	White MR16 trim
		5	5'	(blank)	Fluorescent only	GB	Trimless (sheetrock)	NFL ³	T8	EDHL	Lutron Hi-Lume® dimming			CP	Chicago plenum	
		6	6'			FL	5/8" flange (sheetrock)		T5S ^{2,4,5}	EDE10	Lutron Eco-10® dimming					
		8	8'						T5HOS ^{2,4,5}	EDES	Lutron Eco System®					
	_ ft.		Specify continuous run length (in whole feet)													

Notes

- MR16 modules are supplied at each end of individual unit.
- Fixture depth increases to 6 3/4" for these options.
- No fluorescent lamp; metal plate with downlights spaced 2' on center (minimum).
- S = Staggered lamping.
- Fluorescent only. Consult factory for lamp and ballast compatibility.