



MM-C, MM-P SERIES

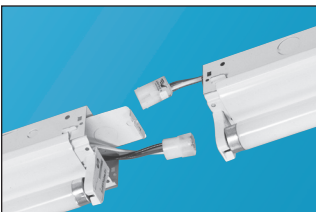
Linear T5 1- or 2-Lamp Fluorescent Narrow Strip Luminaire

Fixture Type: _____

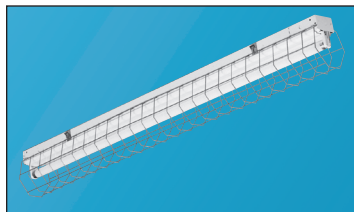
Job Information: _____

SPECIFICATIONS:

- General-purpose 2.75" narrow linear T5 fluorescent open lamp strip. Multiple lamping and ballast choices. Directional reflectors, wire guards, and mounting accessories. Module lengths; 2Ft., 3Ft., 4Ft., 5Ft., 6Ft., and 8Ft.
- Applications: Use for all commercial, industrial, retail, and residential general area lighting applications. Also specified for direct and indirect cove and valence lighting in combination with all types of architectural details.
- Lamps: Utilizes all linear T5 and HO-T5 fluorescent lamps. One or two-lamp cross sections.
- Lengths/Lamps: 2Ft/14W-T5 or 24W-HO-T5; 3Ft/21W-T5 or 39W-HO-T5; 4Ft/28W-T5 or 54W-HO-T5; 5Ft/35W-T5 or 80W-HO-T5; 6Ft/21W-T5 or 39W-HO-T5 tandem lamps; 8Ft/28W-T5 or 54W-HO-T5 tandem lamps. Other T5 lamps as specified.
- Ballasts T5 and HO-T5: Electronic programmed start, normal light output, high power factor. THD less than 10% most ballast/lamp combinations. End-of-life safety shut down feature. Up to 2-lamps per ballast is standard. Exceptions; up to 4-lamps per 54W-HO-T5, up to 1-lamp per 80W-HO-T5. Multi-volt operates a range from 120V-277V, 50HZ-60HZ. Lutron or Advance dimming ballasts as specified.
- Optional wiring: Two ballasts for dual circuitry. Tandem-in-line wiring. Master-slave wiring. Single or dual circuit quick connect plug through wiring harnesses.
- Emergency battery back up: Integrated pack ranges from 500-lumen output up to 1300 lumens. Varies with lamp type.
- Housing: Die formed from code gauge cold rolled steel. End plates quickly convert to snap-in continuous row joiners for uninterrupted wireway. Easy install socket plates have snap-in action. Wireway covers snap on or off for easy installations and maintenance. Optional screw-down covers for tight coves or added security. NYC code 20GA housing has ends and socket plates securely riveted into place. Sufficient knockouts are provided on the back and ends for all electrical connections. Baked white enamel finish provides a minimum reflectivity of 87%.
- Sockets: Miniature T5 quarter-turn bi-pin rotary locking type.
- Installations: Suitable for individual or continuous row mounting. May be surface mounted or suspended on stems, cables, or rods.
- Optional reflectors: For shielding and directional light patterns; Asymmetric, symmetric, direct-light designs. White enamel steel finish or Miro-4 or equal enhanced specular aluminum with a 95% reflectivity. Custom shapes available.
- Optional accessories: Ship separately; Wire guards, V hangers, stem sets, cable sets. Wired-in; GLR or GMF fusing, 120V 18/3-SJT cord and plug set, 120V 16/3-SJT cord and NEMA L5-15P twist-lock plug set, 277V 16/3-SJT cord and NEMA L7-15P twist-lock plug set, various occupancy sensors.
- UL and CUL listed 1598 and bears their label. Suitable for dry locations or optional damp locations with UL Damp Label. Union made and labeled.



P1 or P2 Plug Thru
Quick Connect Feature.
(Shown with end plate
as joiner)



Wire Guard



MM-C, MM-P SERIES Linear T5 1- or 2-Lamp Fluorescent Narrow Strip Luminaire

Fixture Type:

Job Information:

ORDERING DATA: Fill in boxes below with corresponding bold options.

Example: MM-154-HO-T5/8T-C-ELB-UNI-EMP/1320

Series	No. of Lamps Cross	Lamp Wattage/Ea./ Fixture Length	Lamp Type	Tandem Housing/ Fixture Length	Housing End Type	Ballast Type	Voltage	Misc.
MM 2.75" Narrow Housing.	1 Lamp	T5 LAMPS 14 14W-T5-24"L. 21 21W-T5-36"L. 28 28W-T5-48"L. 35 35W-T5-60"L.	T5 Linear T5 HO-T5 Linear HO-T5	Leave Blank for All 2Ft., 3Ft., 4Ft., 5Ft. /6T 72" Housing, 3Ft. Lamps in Tandem. /8T 96" Housing, 4Ft. Lamps in Tandem.	C Combination End/Joiner. 1-Lamp Cross Sections. C-2.75 Combination End/Joiner. 2.75" Wide. All 2-Lamp Cross Sections. P Riveted Ends. 20GA Housing. NYC Code. 1-Lamp Cross Sections. P-2.75 Riveted Ends. 20GA Housing. NYC Code. 2.75" Wide. All 2-Lamp Cross Sections.	ELB T5 Electronic Programmed Start. Up to 2-Lamps/ T5 Ballast. ELB HO-T5 Electronic Programmed Start. Up to 2-Lamps/ HO-T5 Ballast. Except: Up to 4-Lamps/54W-HO-T5 Ballast. Up to 1-Lamp/ 80W-HO-T5 Ballast. ELBD T5 or HO-T5 Electronic Dimming. Lutron or Advance as Specified. Up to 2-Lamps/ Ballast. ELB- T5 or HO-T5 Electronic As Specified.	UNI T5 or HO-T5 Universal Voltage. Multi-Volt 120V-277V, 50HZ-60HZ. 120V T5 or HO-T5 Dedicated Voltage 120V-60HZ. 277V T5 or HO-T5 Dedicated Voltage 277V-60HZ.	EMP/ISL28 ISL-28 or Equal 500 Lumens. One T5 Lamp. EMP/ISL54 ISL-54 or Equal 825 Lumens. One T5 or HO-T5 Lamp. EMP/ISL540 ISL-540 or Equal 1300 Lumens. One T5 or HO-T5 Lamp. EMP/132 I-32 or Equal 500 Lumens. One 28W-T5 Lamp. EMP/1320 I-320 or Equal 1150 Lumens. One T5 or HO-T5 Lamp. 2B Two Ballasts For Dual Circuits. P1 Single Circuit Plug Thru. Specify Voltage. P2 Dual Circuit Plug Thru. Specify Voltage. TILW Tandem-in-Line Wiring. OS Leviton OSFHU or Equal Occupancy Sensor. 360 Degree Lens Installed. Aisle Way Pattern Included. Others as Specified. 18/3CP 120V 18/3 SJT Cord & Plug Set/Others on Request. 16/3CTP 120V 16/3 SJT Cord & NEMA L5-15P Twist-Lock Plug Set/Others on Request. 277-16/3CTP 277V 16/3 SJT Cord & NEMA L7-15P Twist-Lock Plug Set/Others on Request. GLR/_A Fast Action Fusing. _A Amperage TBD. GMF/_A Slow Action Fusing. _A Amperage TBD. DL UL Lamp Label. SDC Screw-Down Cover.
	2 Lamps. *Must Use C-2.75 or P-2.75 Housing End Type.	HO-T5 LAMPS 24 24W-HO-T5-24"L. 39 39W-HO-T5-36"L. 54 54W-HO-T5-48"L. 80 80W-HO-T5-60"L. As Specified, Other T5 Lamps.						

REFLECTORS & WIRE GUARDS: (Order Separately)

Example: MMR-132-A
Use 2 Each for 6ft. & 8ft. Fixtures

Series	No. of Lamps Cross	Lamp Wattage/Ea. Fixture Length	Shape (Reflector Only)
MMR White Steel MRC-MM Enhanced Spec Alum 95% Reflectivity WG-MM Wire Guard	1 2.75" Wide Hsg	17 24"L. 25 36"L. 32 48"L.	A Asymmetric S Symmetric D Direct-Light C Custom

PHOTOMETRICS:

Reports available upon request.

DIMENSIONAL DATA/CROSS SECTION:

