



MP1 SERIES

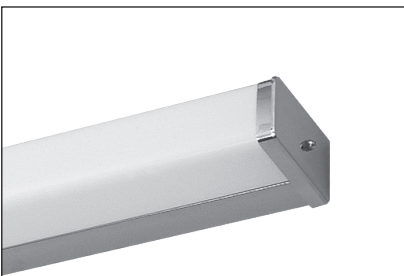
Bath and Utility Luminaire Linear T8 Fluorescent

Fixture Type: _____

Job Information: _____

SPECIFICATIONS:

- Linear T8 fluorescent wall or ceiling luminaire designed for bath and vanity lighting and general-purpose utility lighting demands. A contemporary designed smooth white diffuser surrounds the light source with a soft attractive appearance while providing smooth glare free illumination. The highly polished chrome finish expresses a sense of luxury and cleanliness, important elements for baths and vanities. The white enamel finish may be best suited for utility lighting needs.
- Applications: Residential baths and vanities, multi-family housing, public restrooms, stairwells, and utility rooms and closets.
- Lamping: One-lamp cross section, linear T8 fluorescent. Linear T12 available upon request for residential installations only.
- Length/Lamps: 2FT/17W-T8; 3FT/25W-T8; 4FT/32W-T8. On request, 1.5FT/15W-T8 or T12.
- Housings: Die formed from code grade cold rolled steel with galvanized steel ends riveted into place. An internal white enamel ballast cover/reflector is easily removed for wiring access. One-piece end caps secure the diffuser while closing off the entire fixture. Back knockout cluster for direct attachment to a recessed junction box. Finished with a highly polished chrome or white enamel paint. Optional finishes on request.
- Diffusers: A one-piece smooth white diffuser is extruded from 100% virgin acrylic material for high performance, durability, and long lasting service. Permits maximum light transmission while offering total lamp obscurity.
- Ballasts: Electronic instant start, normal light output, high power factor, THD less than 10% most ballast/lamp combinations. Optional T8 performances: rapid start circuit, high light output, low-watt. Multi-volt operates a range from 120V-277V, 50HZ-60HZ.
- Switching & electrical options: All options 120V only. Pull chain switch, rotary switch, and grounded 3-wire outlet.
- Emergency battery back-up: Integrated pack for 500-lumen output. May vary with lamp type.
- Installations: Suitable for wall or ceiling mounting. May be mounted continuously with available joiner band. Please contact factory with row information for proper field set up.
- UL and CUL listed 1598 and bears their label. Suitable for dry locations or optional damp locations with UL Damp Label. Union made and labeled.



Detail



MP1 SERIES Bath and Utility Luminaire Linear T8 Fluorescent

Fixture Type: _____

Job Information: _____

ORDERING DATA: Fill in boxes below with corresponding bold options.

Example: MP1-132-OCT-A-WHT-PS-ELB-120V

Series	No. of Lamps Cross	Lamp Wattage/Ea./Nom. Fixture Length	Lamp Type	Diffuser Type	Optional Finish	Optional Electrical Accessory	Ballast Type	Voltage	Misc
MP1	1 Lamp	17 17W-T8-2FT. 25 25W-T8/3FT. 32 32W-T8/4FT.	OCT Linear T8	A Acrylic Smooth White Diffuser.	Leave blank for Polished Chrome. WHT White	Leave blank for No Option. PC Single Circuit Pull Chain Switch. 120V Only. PS Rotary Switch. 120V Only. UG Grounded Outlet. 120V Only.	ELB T8 Electronic Instant Start. ELBL T8 Electronic Instant Start, Low Watt. ELBH T8 Electronic Instant Start, High Light Output. ELBS T8 Electronic Rapid Start. ELBD Electronic Dimming, Lutron or Advance as Specified. ELB- Electronic As Specified	UNI Universal Volatage, Multi-Volt 120V-277V, 50HZ-60HZ. 120V 120V-60HZ. 277V 277V-60HZ.	EMPK/I32 I-32 or Equal 500 Lumens. One 25W-T8 or 32W-T8 Lamp Only. DL UL Damp Label.

ACCESSORIES: (Order Separately)

CAT#	Description
JB1C	Joiner Band/Chrome/MP1 Must contact factory with row information for proper field set up.
JB1W	Joiner Band/White/MP1 Must contact factory with row information for proper field set up.
APC	5-1/4" Round Adapter Plate-Chrome
APW	5-1/4" Round Adapter Plate-White

PHOTOMETRICS:

Other reports available upon request.

DIMENSIONAL DATA/CROSS SECTION:

