

MP65 SERIES

Linear T8 Fluorescent Ceiling or Wall Compact Wrap Luminaire

Fixture Type: _____

Job Information: _____

SPECIFICATIONS:

- Linear T8 fluorescent multi-use luminaire designed for ceiling or wall lighting applications. High performing luminaire features a full wrap-around style acrylic diffuser on a compact architecturally pleasing 4.5-inch square profile. New style hardware-free end caps provide the crisp and clean look designers want. Baffle options are available for directional light control.
- Ceiling lighting: Applications include hallways, corridors, and stairwells. Use in small to medium size rooms for general illumination.
- Wall lighting: Applications include hallways, corridors, and stairwells. Use over vanities, in public restrooms, or over workstations and desks. Add one of three optional baffles for directional light control. Front baffle shields and splits the light equally up and down the wall, producing direct down lighting and indirect uplighting. A 2/3 baffle shields both the top and front, producing all down lighting. A 1/3 baffle shields only the top.
- One or two-lamp cross sections, T8 linear fluorescent.
- Length/Lamps: 2FT/17W-T8; 3FT/25W-T8; 4FT/32W-T8. On request; 8FT/32W-T8 tandem lamps; 1.5FT/15W-T8 or T12.
- Housings: Die formed from code grade cold rolled steel with galvanized steel ends riveted into place. An internal ballast cover/reflector is easily removed for wiring access. One-piece hardware-free end caps are drawn with a 5/8" flange on three sides to overlap and secure the diffuser. End caps slide-on and lock into place without unsightly screws or other hardware. Optional tamperproof screws are available. Back knockout cluster for direct attachment to a recessed junction box. Finished with a high quality white enamel paint offering an 87% reflectivity. Optional finishes on request.
- Diffusers: A one-piece clear diffuser is extruded from 100% virgin acrylic material with an evenly spaced pattern of conical prisms on the bottom panel and inside linear prisms along the sides. Provides superior performance, light control, and long lasting service.
- Optional diffusers: A contemporary looking acrylic smooth white diffuser provides a soft and clean appearance with total lamp obscurity.
- Optional unbreakable diffuser: A clear extruded diffuser from unbreakable polycarbonate material has conical and linear prisms. For use in areas subject to vandalism and abuse.
- Ballasts: Electronic instant start, normal light output, high power factor, THD less than 20%. Optional T8 performances: rapid start circuit, high light output, low-watt, THD less than 10%. Lutron or Advance dimming ballasts as specified. Dedicated voltages; 120V-60HZ or 277V-60HZ. Optional multi-volt operates a range from 120V-277V, 50HZ-60HZ, and is less than 10% THD.
- Switching & electrical options: All options 120V only. Pull chain switch, rotary switch, and grounded 3-wire outlet.
- Emergency battery back up: Applications such as hallways and stairwells require emergency lighting systems. Integrated pack ranges from 500-lumens output up to 1400 lumens.
- Installations: Suitable for surface mounting on ceilings and walls. May be run in continuous rows with available joiner bands. For surface mounted conduit, a special notched end is available.
- UL and CUL listed 1598 and bears their label. Suitable for dry locations or optional damp locations with UL Damp Label. Union made and labeled.



MP65 SERIES Linear T8 Fluorescent Ceiling or Wall Compact Wrap Luminaire

Fixture Type:

Job Information:

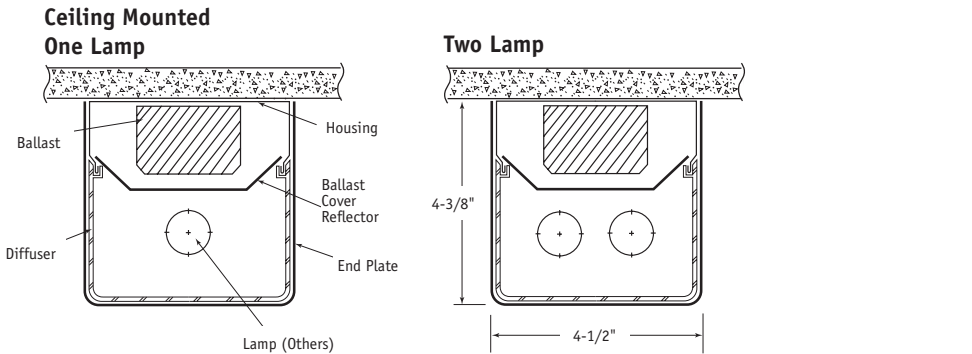
ORDERING DATA: Fill in boxes below with corresponding bold options.

Example: MP65-232-OCT-A-PC-FB-ELB-120V

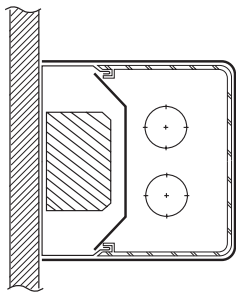
Series	Number of Lamps Cross	Lamp Wattage/Ea./ Nom. Fixture Length	Lamp Type	Diffuser Type	Optional Electrical Accessory	Optional Baffle	Ballast Type	Voltage	Misc.
MP65 Linear T8 Fluorescent Ceiling or Wall Compact Wrap Luminaire	1 Lamp 2 Lamps	17 17W-T8/2FT 25 25W-T8/3FT 32 32W-T8/4FT	OCT Linear T8	A Acrylic Prismatic Clear Diffuser. ASW Acrylic Smooth White Diffuser. PPC Polycarbonate (Lexan) Prismatic Clear Diffuser.	Leave Blank for No Option. PC Single Circuit Pull Chain Switch. 120V Only. PS Rotary Switch. 120V Only. UG Grounded Outlet. 120V Only.	Leave Blank for No Option. FB Front Baffle. 2/3B 2/3 Baffle, Top and Front. 1/3B 1/3 Baffle, Top Only.	ELB T8 Electronic Instant Start. Up to 2-Lamps/ Ballast. ELBL T8 Electronic Instant Start Low Watt. Up to 2-Lamps/ Ballast. ELBH T8 Electronic Instant Start High Light Output. Up to 2-Lamps/ Ballast. ELBS T8 Electronic Rapid Start <10%THD. Up to 2-Lamps/ Ballast. ELBD Electronic Dimming, Lutron or Advance as Specified. Up to 2-Lamps/ Ballast. ELB- Electronic As Specified.	UNI Universal Voltage, Multi-Volt 120V-277V, 50HZ-60HZ, <10%THD. 120V 120V-60HZ 277V 277V-60HZ	EMPK/I32 I-32 or Equal 500 Lumens, One T8 Lamp. EMPK/I48 I-48 or Equal 700 Lumens, One or Two T8 Lamps. EMPK/I320 I-320 or Equal 1350 Lumens, One or Two T8 Lamps. EMPK/I232 I-232 or Equal 1400 Lumens, Two T8 Lamps. TP Tamperproof Screws/1-Screw per End Cap. 2B 2-Ballasts/Dual Circuits. DL UL Damp Label.

Order Separately	
Catalog#	Description
JB65	Joiner Band/White/MP65
NOTE: On request: 8Ft and 1.5Ft Units	

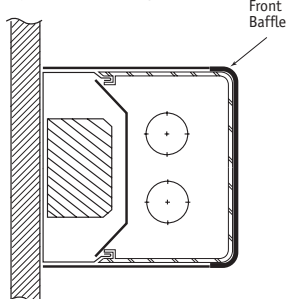
CROSS SECTIONS:



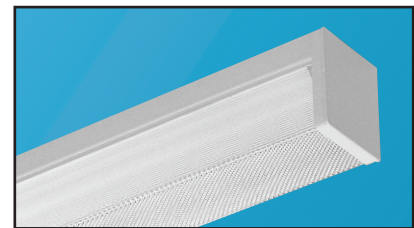
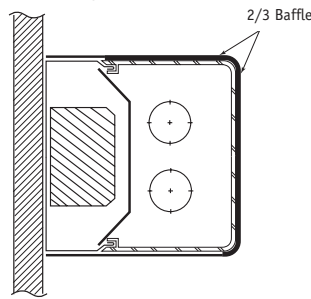
Wall Mounted No Baffle



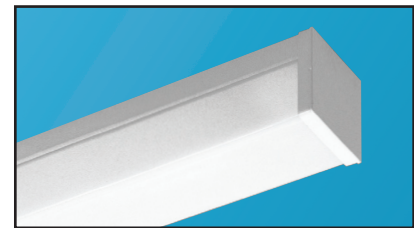
Front Baffle Up & Down Light



2/3 Baffle Down Light



Acrylic Prismatic Clear Diffuser



Optional Acrylic Smooth White Diffuser

