



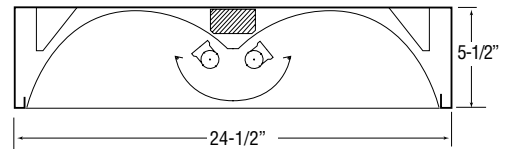
Zenith M Series

ZBM/ 2X4 Center Light Shield/Surface Module

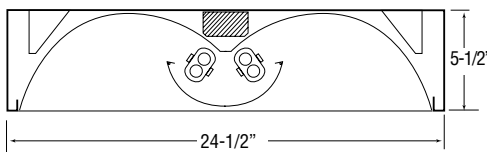
Fixture Type:

Job Name:

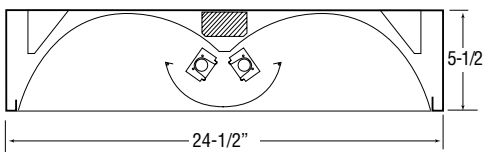
Two Lamp Linear T8



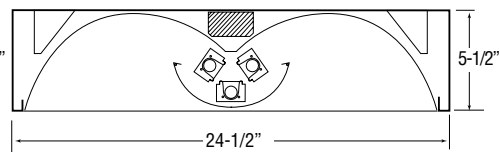
Four Lamp 2Ft. Twin Tube Compact TTS



Two Lamp 4Ft. Linear T5, T8



Three Lamp 4Ft. Linear T5



SPECIFICATIONS:

- Surface mounted 2X4 fluorescent luminaire featuring a computer designed precision optical system that provides indirect/direct illumination. An optically correct double arched reflector enables precise indirect light distribution, while a center located perforated light shield provides the soft direct illumination.
- Optional hybrid light shield has perforated sides with a straight cross blade louver down the center.
- The system delivers uniform illumination with high visual comfort and superior brightness control. Broad angle illumination lights walls and vertical surfaces creating a more open and comfortable space.
- Luminaire is 5-1/2" deep.
- Housing is die formed from 20GA cold rolled steel and fabricated in a computer-controlled operation. Spot-welded together for strength and unity with mitered corners.
- The indirect reflector, CAD designed to the optimum contour, is a two-piece system. One side is securely screwed into the housing with hidden hardware. The other side is held in place with quarter turn cam locks for easy ballast access.
- The center light shield is die formed and fabricated from heavy gauge perforated steel and integrated with an internal white Mylar panel. Light shield is capable of swinging down for lamp access.
- A custom formulated non-glare white powder coating is applied to the reflector, light shield, and the housing after fabrication. Provides a reflectivity of at least 90%.
- Lamping options: Four 2ft. twin tube compact fluorescents, 40W-TT5, 50W-TT5, or 55W-TT5. Two sets of two each of these lamps are end-on-end down the center. Two or three 4ft. linear fluorescents, 28W-T5 or 54W-HO-T5, or two 4ft. 32W-T8.
- Ballasts are full electronic type, high power factor, THD of less than 20%. Special ballast performances are available as specified. Three lamp linear units available with 2-ballasts for dual switching option. Dimming ballasts, emergency battery packs as specified. Standard voltages are 120V-60HZ and 277V-60HZ or as specified. Multi-volt 120V-277V/50-60HZ is optional
- Knockouts are located on the top of the housing. Optional side knockouts for surface conduit entry as specified. Factory installed lamps as specified.
- Designed for surface mounting directly to most ceiling types. May be suspended by auxiliary hanging hardware.
- UL listed 1598 with CUL approval and bears the label. Union made and labeled.

Ordering Data

Fixture Type:

Job Name:

| Series | Module Size | No. of Lamps/ Wattage Ea. Lamp | Lamp Type | Ballast Type | Voltage | Misc. |
|---|--|-----------------------------------|---|---------------------------------------|---|---|
| ZB Zenith M Center Shield | -24M 2 X 4 Surface Module | -440 4-40W-TT5 | -BIAX Twin Tube Compact TT5 | -ELB Electronic TT5, T5, T8 | -120V 120 Volt | -EMPK Emergency Pack I-24, B-100 |
| ZBL Zenith M Center Shield With Cross Blade Louver | | -450 4-50W-TT5 | -T5 Linear T5 | - As Specified | -277V 277 Volt | -EMPKS Emergency Pack As Specified |
| | | -455 4-55W-TT5 | -HO-T5 Linear High Output T5 | | -UNI Multi-Volt 120V-277V 50HZ-60HZ | -2B 2-Ballasts |
| | | -228 2-28W-T5 | -OCT Linear T8 | | - Other Voltages | -LP Factory Lamps Installed Specify Color, ie: LP835 |
| | | -254 2-54W-HO-T5 | | | | - As Specified |
| | | -328 3-28W-T5 | | | | |
| | | -354 3-54W-HO-T5 | | | | |
| | | -232 2-32W-T8 | | | | |
| | | -332 3-32W-T8 | | | | |
| | | - As Specified | | | | |

Photometrics

ZB-24M-440-BIAX-ELB-120V

| LTL # 05817 | | ZONAL CAVITY COEFFICIENTS OF UTILIZATION EFFECTIVE FLOOR CAVITY REFLECTANCE=0.20 | | | | | | | | | | | | CANDLEPOWER DISTRIBUTION | | | | | | | | | | | |
|---------------------|--|---|-----|-----|-----|-------|-----|-----|-----|-------|-----|-----|-----|-----------------------------------|-----|-----|-----|-----------------------------------|-----|-----|-----|-----|-----|-----|--|
| CEILING | | 80 | | | | 70 | | | | 50 | | | | 30 | | | | 10 | | | | 0 | | | |
| WALL | | .70 | .50 | .30 | .10 | .70 | .50 | .30 | .10 | .50 | .30 | .10 | .50 | .30 | .10 | .50 | .30 | .10 | .50 | .30 | .10 | .50 | .30 | .10 | |
| RCR | | | | | | | | | | | | | | | | | | | | | | | | | |
| 0 | | .78 | .78 | .78 | .78 | .76 | .76 | .76 | .76 | .73 | .73 | .73 | .69 | .69 | .69 | .67 | .67 | .67 | .65 | .65 | .65 | | | | |
| 1 | | .71 | .68 | .66 | .63 | .70 | .67 | .64 | .62 | .64 | .62 | .60 | .62 | .60 | .58 | .59 | .58 | .57 | .55 | .55 | .55 | | | | |
| 2 | | .65 | .60 | .55 | .52 | .63 | .58 | .54 | .51 | .56 | .53 | .50 | .54 | .51 | .49 | .52 | .50 | .48 | .46 | .46 | .46 | | | | |
| 3 | | .59 | .53 | .47 | .43 | .58 | .52 | .47 | .43 | .50 | .46 | .42 | .48 | .44 | .41 | .46 | .43 | .41 | .39 | .39 | .39 | | | | |
| 4 | | .54 | .47 | .41 | .37 | .53 | .46 | .40 | .36 | .44 | .39 | .36 | .43 | .39 | .35 | .41 | .38 | .35 | .33 | .33 | .33 | | | | |
| 5 | | .49 | .41 | .35 | .31 | .48 | .40 | .35 | .30 | .39 | .34 | .30 | .37 | .33 | .30 | .36 | .32 | .29 | .28 | .28 | .28 | | | | |
| 6 | | .45 | .37 | .31 | .26 | .44 | .36 | .30 | .26 | .35 | .30 | .26 | .34 | .29 | .26 | .33 | .29 | .25 | .24 | .24 | .24 | | | | |
| 7 | | .42 | .33 | .27 | .23 | .41 | .32 | .27 | .23 | .31 | .26 | .22 | .30 | .26 | .22 | .29 | .25 | .22 | .21 | .21 | .21 | | | | |
| 8 | | .38 | .29 | .24 | .20 | .37 | .29 | .23 | .20 | .28 | .23 | .19 | .27 | .23 | .19 | .26 | .22 | .19 | .18 | .18 | .18 | | | | |
| 9 | | .35 | .26 | .21 | .17 | .34 | .26 | .20 | .17 | .25 | .20 | .17 | .24 | .20 | .17 | .24 | .19 | .16 | .15 | .15 | .15 | | | | |
| 10 | | .33 | .24 | .18 | .15 | .32 | .23 | .18 | .15 | .23 | .18 | .15 | .22 | .18 | .15 | .21 | .17 | .15 | .13 | .13 | .13 | | | | |
| ZONAL LUMEN SUMMARY | | LUMENS | | | | %LAMP | | | | %FIXT | | | | TOTAL LUMINAIRE EFFICIENCY: 65.3% | | | | TOTAL REFLECTANCE OF PAINT: 91.7% | | | | | | | |
| 0-30 | | 2067 | | | | 16.4 | | | | 25.1 | | | | CIE TYPE: DIRECT | | | | SPACING CRITERIA: 1.2 1.4 | | | | | | | |
| 0-40 | | 3431 | | | | 27.2 | | | | 41.7 | | | | PLANE: 0-DEG 90-DEG | | | | LUMINOUS LENGTH: 47.000 22.375 | | | | | | | |
| 0-60 | | 6297 | | | | 50.0 | | | | 76.5 | | | | | | | | | | | | | | | |
| 0-90 | | 8229 | | | | 65.3 | | | | 100.0 | | | | | | | | | | | | | | | |
| 90-180 | | 0 | | | | 0.0 | | | | 0.0 | | | | | | | | | | | | | | | |
| 0-180 | | 8229 | | | | 65.3 | | | | 100.0 | | | | | | | | | | | | | | | |

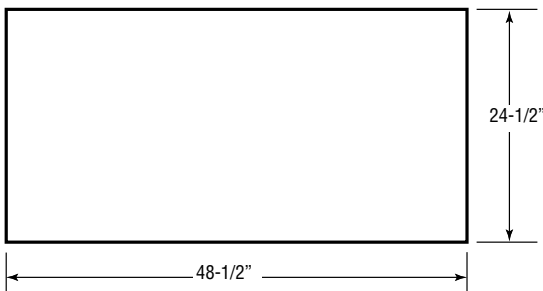


Shown: ZBL with Cross Blade Louver

Full Report Available Upon Request.

All dimensional data subject to change, consult factory when critical.

Back Plan



Back Plan Per Job Specs,
Available On Request.

