

# MP5 SERIES

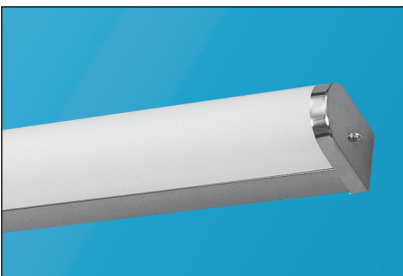
## Bath and Utility Luminaire Linear T8 Fluorescent

Fixture Type: \_\_\_\_\_

Job Information: \_\_\_\_\_  
 \_\_\_\_\_  
 \_\_\_\_\_

### SPECIFICATIONS:

- Linear T8 fluorescent wall or ceiling luminaire designed for bath and vanity lighting and general-purpose utility lighting demands. A traditional-looking rounded ribbed white diffuser surrounds the light source with a soft attractive appearance while providing glare free illumination. The highly polished chrome finish expresses a sense of luxury and cleanliness, important elements for baths and vanities. The white enamel finish may be best suited for utility lighting needs.
- Applications: Residential baths and vanities, multi-family housing, public restrooms, stairwells, and utility rooms and closets.
- Lamping: One-lamp cross section, linear T8 fluorescent. Linear T12 available upon request for residential installations only.
- Length/Lamps: 2FT/17W-T8; 3FT/25W-T8; 4FT/32W-T8. On request, 1.5FT/15W-T8 or T12.
- Housings: Die formed from code grade cold rolled steel with galvanized steel ends riveted into place. An internal white enamel ballast cover/reflector is easily removed for wiring access. One-piece end caps secure the diffuser while closing off the entire fixture. Back knockout cluster for direct attachment to a recessed junction box. Finished with a highly polished chrome or white enamel paint. Optional finishes on request.
- Diffusers: A one-piece ribbed white diffuser is extruded from 100% virgin acrylic material for high performance, durability, and long lasting service. Permits maximum light transmission while offering total lamp obscurity.
- Ballasts: Electronic instant start, normal light output, high power factor, THD less than 10% most ballast/lamp combinations. Optional T8 performances: rapid start circuit, high light output, low-watt. Multi-volt operates a range from 120V-277V, 50HZ-60HZ.
- Switching & electrical options: All options 120V only. Pull chain switch, rotary switch, and grounded 3-wire outlet.
- Emergency battery back-up: Integrated pack for 500-lumen output. May vary with lamp type.
- Installations: Suitable for wall or ceiling mounting. May be mounted continuously with available joiner band. Please contact factory with row information for proper field set up.
- UL and CUL listed 1598 and bears their label. Suitable for dry locations or optional damp locations with UL Damp Label. Union made and labeled.



Detail



# MP5 SERIES Linear T8 Fluorescent Bath and Utility Luminaire

Fixture Type: \_\_\_\_\_

Job Information: \_\_\_\_\_

**ORDERING DATA:** Fill in boxes below with corresponding bold options.

Example: MP5-132-OCT-A-WHT-PS-ELB-120V

Series	Number of Lamps Cross	Lamp Wattage/Ea./Nom. Fixture Length	Lamp Type	Diffuser Type	Optional Finish	Optional Electrical Accessory	Ballast Type	Voltage	Misc
MP5	1 Lamp	17 17W-T8-2FT. 25 25W-T8/3FT. 32 32W-T8/4FT.	OCT Linear T8	A Acrylic Ribbed White Diffuser.	Leave blank for Polished Chrome. <b>WHT</b> White	Leave blank for No Option. <b>PC</b> Single Circuit Pull Chain Switch. 120V Only. <b>PS</b> Rotary Switch. 120V Only. <b>UG</b> Grounded Outlet. 120V Only.	<b>ELB</b> T8 Electronic Instant Start. <b>ELBL</b> T8 Electronic Instant Start Low Watt. <b>ELBH</b> T8 Electronic Instant Start High Light Output. <b>ELBS</b> T8 Electronic Rapid Start. <b>ELBD</b> Electronic Dimming, Lutron or Advance as Specified. <b>ELB-__</b> Electronic As Specified	<b>UNI</b> Universal Voltage, Multi-Volt 120V-277V, 50HZ-60HZ. <b>120V</b> 120V-60HZ. <b>277V</b> 277V-60HZ.	<b>EMPK/132</b> I-32 or Equal 500 Lumens. One 25W-T8 or 32W-T8 Lamp Only. <b>DL</b> UL Damp Label.

**ACCESSORIES: (Order Separately)**

CAT#	Description
JB5C	Joiner Band/Chrome/MP5 Must contact factory with row information for proper field set up.
JB5W	Joiner Band/White/MP5 Must contact factory with row information for proper field set up.
APC	5-1/4" Round Adapter Plate-Chrome
APW	5-1/4" Round Adapter Plate-White

**PHOTOMETRICS:**

Other reports available upon request.

**DIMENSIONAL DATA/CROSS SECTION:**

