

# COOPER LIGHTING - METALUX®

## DESCRIPTION

The energy efficient BE Series features decorative non-luminous end caps for more direct task lighting. The BE with an acrylic prismatic refractor provides an attractive ambience without increasing brightness. BE luminaires offer up, down or combination lighting. The BE Series features wall washing uplight, multi-level switching and convenience outlets as available options.

The BE Series features efficiency in a low profile wall bracket. The Series is an excellent choice for dressing rooms, lavatories, hospital and nursing homes, stairways and task lighting.

## SPECIFICATION FEATURES

### A ... Construction

Housing die formed code gauge prime cold rolled steel. Channel cover secured by quarter-turn fasteners for easy wiring access. Up, down or combination lighting with 3 or 4 foot fixtures. Decorative opaque injection molded end plates.

### B ... Electrical

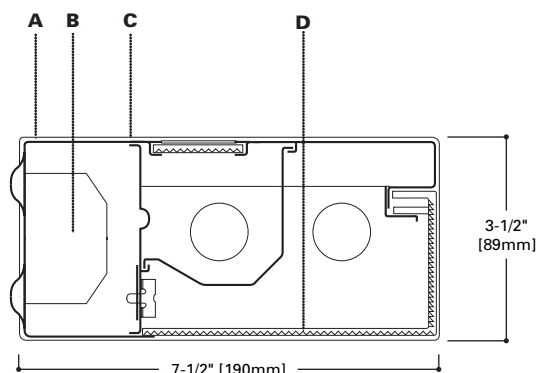
Ballast are CBM/ETL Class "P" and positively secured by mounting bolts. Pressure lock lampholders. UL/CUL listed. Suitable for damp locations.

### C ... Finish

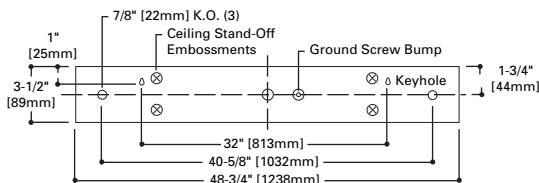
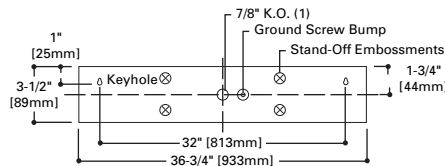
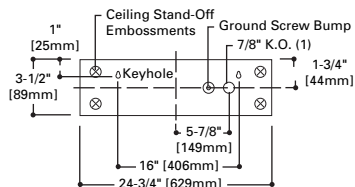
Painted after fabrication. Electrostatically applied baked white polyester powder enamel finish. Multistage cleaning cycle, iron phosphate coating with rust inhibitor. Conveyorized application and baking timing accurately controlled at an elevated temperature.

### D ... Frame/Shielding

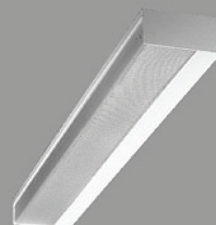
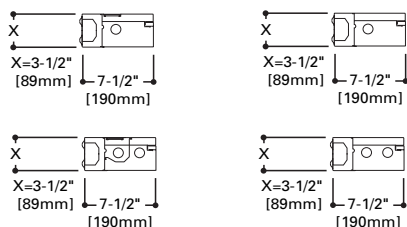
100% virgin acrylic prismatic diffuser. Front of diffuser has inside linear prisms and bottom has pyramidal prisms for low brightness control. Diffuser slides forward for easy installation and maintenance. Uplight diffuser prismatic acrylic.



## MOUNTING DATA



## LAMP CONFIGURATIONS



## BE, BEU

120  
117  
130  
125  
140  
132  
220  
217  
230  
225  
240  
232

## COMMERCIAL WALL BRACKET 2' Wall Bracket

1 or 2 Lamp LTS or HTS  
3' or 4' Wall Bracket

## ENERGY DATA 1 or 2 Lamp

Input Watts:

### EB Ballast & STD Lamps

117 (20), 130 (31), 125 (28), 140 (38)  
132 (30), 217 (36), 230 (60), 225 (47)  
240 (72), 232 (61)

### ES Ballast & STD Lamps

120 (32), 117 (23), 130 (46), 125 (33)  
140 (38), 132 (30), 220 (58), 217 (45)  
230 (74), 225 (65), 240 (86), 232 (71)  
Luminaire Efficacy Rating

LER = FL-67

Catalog Number: BE-232A

Yearly Cost of 1000 lumens,  
3000 hrs at .08 KWH = \$3.58

LAMPS CONTAIN MERCURY. DISPOSE ACCORDING  
TO LOCAL, STATE OR FEDERAL LAWS

LINEAR DISCONNECT

Safe and convenient means of  
disconnecting power



ADF020688

12/13/2010 2:45:35 PM

Energy Saving Ballast, F32T8/35K lamps rated at 2850 lumens.  
Spacing Criterion: (H)1.6 x mounting height, (L)1.3 x mounting height.

Light Loss Factor .70. For complete photometric report request report BE232.IES

**BE-232A**

Lamps (2) F32T8/35K

Lumens 3150 Each

**Conditions**

Room Size 6' Width x

12' Length

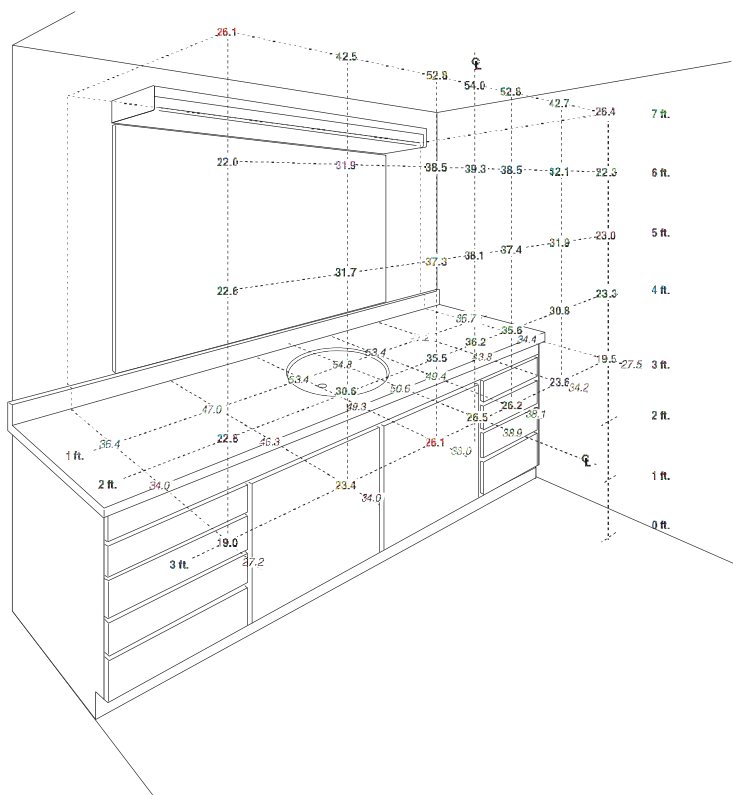
Ceiling Height 9'-0"

**Reflectance**

Ceiling 80%

Walls 50%

Floor 20%



Bold Number denote Vertical Point by Point.

Scale is Exaggerated on Fixture Application and Mounting

**ORDERING INFORMATION**

Sample Number: BE-232-120V-EB81-U

<b>Series</b> <b>BE</b> =Steel Wall Bracket Downlight only <b>BEU</b> =Steel Wall Bracket (Up and Down Light)		<b>Ballast Start Type</b> <b>LTS</b> =Low Trigger Start (20W only) (120V only) <b>HTS</b> =High Trigger Start (20W only)		<b>Ballast Type</b> <sup>1</sup> <b>Blank</b> =Standard Magnetic T12 Ballast <b>EB</b> =Electronic Instant Start <b>ER</b> =T8 Electronic Program Rapid Start. Total Harmonic Distortion < 10%		<b>Options</b> <b>PLUS</b> =Higher Ballast Factor > 1.13. Total Harmonic Distortion < 20% <b>RLS</b> =Rotor Lock Socket (T8 Lamp only) <b>2/1LB</b> =(2) One-Lamp Ballasts (When RS4 or PS4 option is used) <b>PL5PL7</b> =Fluorescent Night Light (5 or 7 Watt) only available in fixtures without a baffle <b>BH</b> =Matte Black Finish (Lens Housing) <b>CO</b> =Convenience Outlet (120V only) <b>RS1</b> =Rotary Switch (1 Circuit, 120V only) <b>PS1</b> =Pull Switch (1 Circuit) <b>RS1D</b> =Rotary Switch wired to Downlight Circuit on a two circuit fixture (120V only) <b>PS1D</b> =Pull Switch, wired to Downlight Circuit on a two circuit fixture (120V only) <b>RS4</b> = Four-way rotary switch, for two circuit, <sup>1</sup> two lamp fixture (120V only) <b>PS4</b> = Four-way pull switch, for two circuit 2 lamp fixture (120V only)		<b>Packaging</b> <b>U</b> =Unit Pack	
<b>Number of Lamps</b> 1 Lamp (Not Included) 2 Lamps (Not Included)		<b>Voltage</b> <sup>1</sup> <b>120V</b> =120 Volt <b>277V</b> =277 Volt <b>347V</b> =347 Volt <b>UNV</b> =Universal Voltage <sup>2</sup> 120-277		<b>Lamp Size</b> <b>2</b> =T12 <b>8</b> =T8		<b>Number of Ballasts</b> <b>1</b> =1 Ballast <b>2</b> =2 Ballast			
<b>Wattage</b> <b>20</b> =20W T12 (24") <b>17</b> =17W T8 (24") <b>25</b> =25W T8 (36") <b>30</b> =30W T12 (36") <b>32</b> =32W T8 (48") <b>40</b> =40W T12 (48")		<b>Options</b> <b>GL</b> =Single Element Fuse <b>GM</b> =Double Element Fuse <b>EL</b> = Emergency Installed							

**Notes:** <sup>1</sup> Products also available in non-US voltage and frequencies for international markets  
<sup>2</sup> Not Available when specifying emergencies, voltage must be specific

**SHIPPING INFORMATION**

Catalog No.	Wt.
BE-117	8 lbs.
BE-125	11 lbs.
BE-132	14 lbs.
BEU-117	8 lbs.
BEU-125	11 lbs.
BEU-132	14 lbs.
BE-217	8 lbs.
BE-225	11 lbs.
BE-232	14 lbs.
BEU-217	8 lbs.
BEU-225	11 lbs.
BEU-232	14 lbs.