

COOPER LIGHTING - METALUX®

DESCRIPTION

The New *Cruze* Retrofit Kit is an effective "Energy Savings Alternative" for today's environmentally conscious marketplace. This retrofit kit system provides customers the opportunity to upgrade their dated louver or lens to a more contemporary center basket lens shielding that is highly efficient, quick to install and fully NEC compliant. The architectural retrofit kit is designed for installation into a 2' x 2' parabolic or troffer.

In a marketplace where aesthetics are still critical elements used to convey style, appearance and performance, the *Cruze* Retrofit Kit is the smart solution for any office, government, educational and retail retrofit kit application whose goal involves energy awareness and conservation without the added renovation and disposal costs.

SPECIFICATION FEATURES

Construction

The retrofit kit assembly consists of four components and fits into most parabolics and troffers. Universal brackets are made from code gauge steel and come pre-wired to ballast and sockets. Kits are pre-assembled and ready for quick, easy install right out of the box. A one-piece high reflectance white reflector installs without any hardware, while a die formed doorframe and architectural lens shielding provides the last component of this retrofit system.

Minimum housing depth = 3-1/2"

Ready-Set

Pre-installed self-tapping screws easily penetrates existing fixture body and ends. Leveling flange aligns, supports, and holds hardware in place, letting you hold the

brackets with one hand while driving in screws. No parts bag or extra hardware needed.

Electrical

Standard Class "P" electronic ballast with captive hardware for ease of install. Push-in lampholders. UL/cUL Listed. Suitable for damp locations. No junction box required.

Door Finish

Cold rolled steel w/multistage iron phosphate pre-treatment for maximum bonding. Highly reflective matte white finish on all reflective surfaces for increased efficiency.

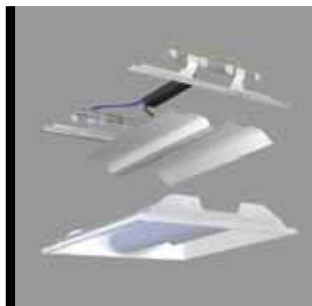
Hinge/Latch

Positive spring loaded, self locking, steel latching allows for easy opening and closing of louver or other shielding media. Hinging and latching can be done from either side of the retrofit kit for increased installation flexibility and ease of maintenance.

Optics

Die formed doorframe and architectural center position lens shielding provides a modern architectural appearance similar to the Metalux Ovation. Overall optical efficiency is above 84%. Optional 97% reflective White Optics material is available to help further maximize kit efficiency, distribution, energy savings and payback.

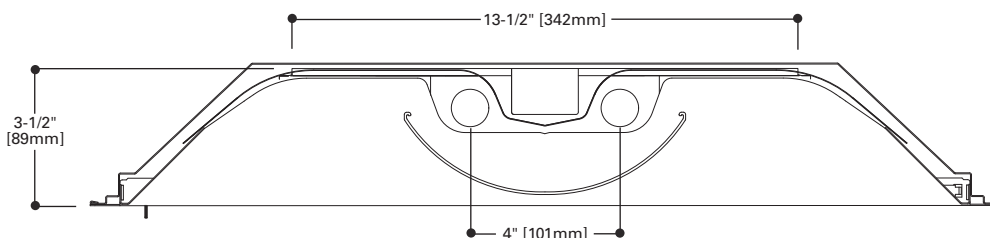
Catalog #		Type
Project		
Comments		Date
Prepared by		



**Cruze
Retrofit 2x2**
217
214T5
224T5

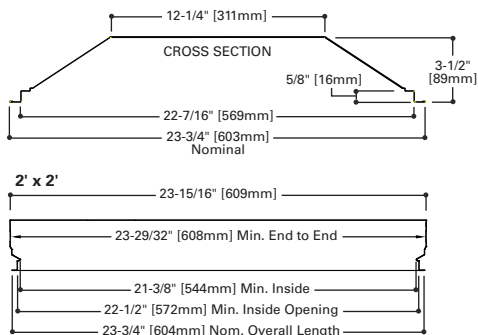
2 LAMP TROFFER AND PARABOLIC
ARCHITECTURAL RETROFIT KIT

Patent Pending



RETROFIT COMPATIBILITY

The *Cruze* retrofit kit was designed to upgrade troffer or parabolic fixtures from all major manufacturers that have the following minimum dimensions:



Before ordering refer to these dimensions as a reference or contact your local representative for a trial install prior to ordering large job quantities.



LAMPS CONTAIN MERCURY. DISPOSE ACCORDING TO
LOCAL, STATE OR FEDERAL LAWS

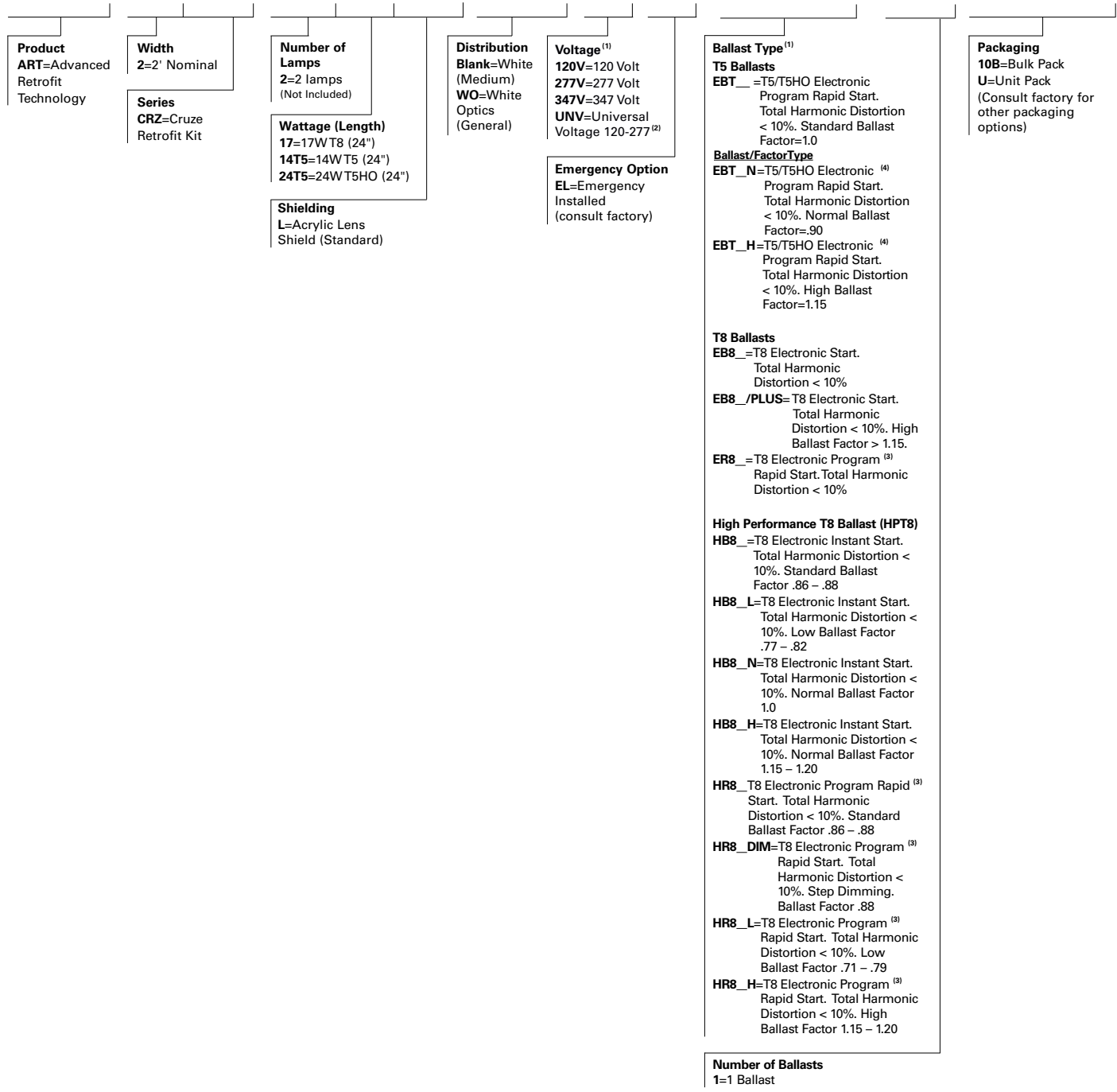
ENERGY DATA

Input Watts:
EB Ballast & STD Lamps
217=32

T5 Ballast & STD Lamps
214T5=34
224T5=52

ORDERING INFORMATION

SAMPLE NUMBER: ART-2CRZ-217L-UNV-EB81-10B



NOTES: ⁽¹⁾Products also available in non-US voltages and frequencies for international markets. ⁽²⁾Not available when specifying emergencies, voltage must be specific. ⁽³⁾Recommended when using retrofits together with motion sensor, daylight harvesting or similar controls. ⁽⁴⁾.90 and 1.15 ballast factor available for 2 or 3 14W T5 or 28W T5 lamps only. For complete product data, go to www.metalux-lighting.com. Specifications & dimensions subject to change without notice. Consult your Cooper Lighting Representative for availability and ordering information.