

## DESCRIPTION

A graceful arched housing with elegantly contoured perforated lamp diffusers. Available in (2'x2') or (2'x4') configurations, these luminaires have no visible lamps, fasteners, hardware, or glaring reflectors, just soft, diffused, and comfortable lighting. "The Fenestra" features totally soft light diffusion. The precisely crafted components of the 202/204R Series provide for high-tech appearance and a low tolerance fit. Combined, these elements make the Neo-Ray Fenestra Series 202/204R an appropriate luminaire for executive offices, private offices, conference rooms, corridors, open office spaces, VDT workspaces, reception areas and dining spaces.

Catalog #		Type
Project		
Comments		Date
Prepared by		

## SPECIFICATION FEATURES

### A ... Construction

20-gauge steel housing. (2'x2' or 2'x4')

### B ... Shielding

Perforated metal panels backed by a white acrylic diffuser.

### C ... Electrical

120, 277, 347 or Universal Voltage electronic ballast. Fixtures and electrical components certified to UL and CUL standards.

### D ... Finish

Durable, low gloss white, powder coated acrylic finish.

### Mounting

Recessed. Specify:  
 (ETG) 15/16" Flat Exposed T-grid,  
 (STG) 9/16" Screw Slot T-grid,  
 (SR) Sheet Rock (Flanged),  
 (FTG) 9/16" Flat Exposed T-grid.



## Fenestra

202

204

2T8

2T5

2T5HO

Long Twin Tube

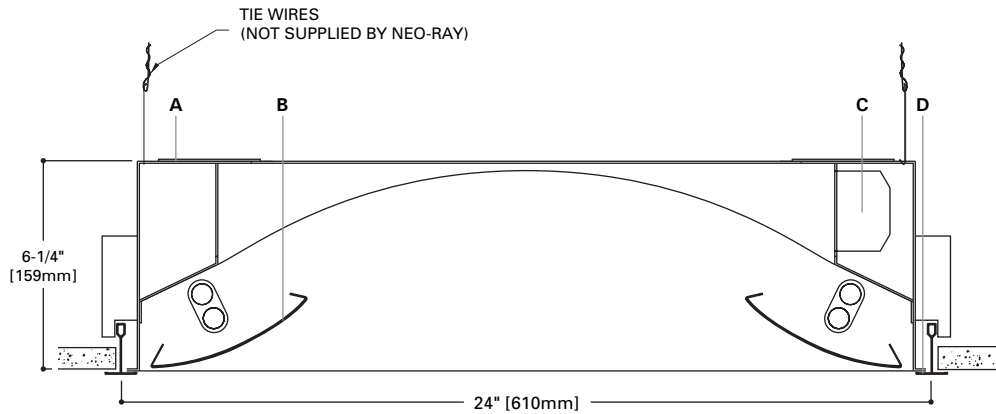
Recessed

Direct-Indirect

Light Distribution:

Indirect - 0.0%

Direct - 100.0%

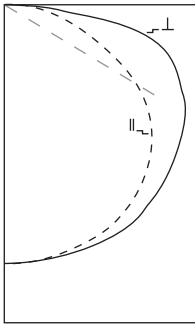


## ORDERING INFORMATION

<b>Series</b> 202: 2' x 2' 204: 2' x 4'	<b>Options</b> <sup>1</sup> C= Chicago Plenum A= Air Return <sup>2</sup> T= Tannenbaum Reflector	<b>Mounting</b> R= Recessed  <b>Number of Lamps</b> 2: 2 Lamps (Not included)	<b>Lamp Type</b> T8 <sup>3</sup> T5 T5HO BX40W BX50W	<b>Ceiling Type</b> ETG: 15/16" Exposed T-Grid STG: Slot T-Grid SR: Sheet Rock (Flanged) FTG: 9/16" Exposed T-Grid	<b>Voltage</b> <sup>4</sup> 1: 120V 2: 277V 3: 347V	<b>Ballast</b> EB= Electronic Ballast DB= Dimming Ballast  <b>Switching Options</b> SI= Single Switching DU= Double Switching	<b>Emergency</b> EM= Emergency Pack
---	---	---	---	--	--	---	--

- Notes: 1 Can be left blank or more than one option may be available, consult factory.  
 2 Air Return not available for Slot T-Grid  
 3 Available in 2'x4' only.  
 4 Not all options available. Please consult your Cooper Lighting Representative for availability.

PHOTOMETRICS



**202-BX40W**  
(2) PF-L40W/35RS  
3150 Lumens

Efficiency 61.0%

Test Report

#NVLAP 168P138

(Consult factory for I.E.S. data not included within this report.)

**Coefficients of Utilization**

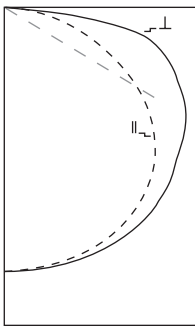
rc	Effective floor cavity reflectance																			
	80%				70%				20%				0%							
	rw	70	50	30	10	70	50	30	10	50	30	10	50	30	10	50	30	10	0	
<b>RCR</b>																				
0	73	73	73	73	71	71	71	71	68	68	68	65	65	65	62	62	62	61		
1	66	64	61	59	65	62	60	58	60	58	56	57	56	54	55	54	53	51		
2	60	55	51	48	59	54	50	47	52	49	46	50	47	45	48	46	44	43		
3	55	49	44	40	54	48	43	39	46	42	39	44	41	38	43	40	37	36		
4	50	43	38	34	49	42	37	33	41	36	33	39	35	32	38	35	32	31		
5	46	38	32	28	45	37	32	28	36	31	28	35	31	27	34	30	27	26		
6	42	34	28	24	41	33	28	24	32	27	24	31	27	24	30	26	24	22		
7	39	30	25	21	38	30	25	21	29	24	21	28	24	21	27	23	20	19		
8	36	27	22	18	35	27	22	18	26	21	18	25	21	18	24	21	18	17		
9	33	24	19	16	32	24	19	16	23	19	16	23	18	15	22	18	15	14		
10	31	22	17	14	30	22	17	14	21	17	14	21	17	14	20	16	14	12		

**Zonal Lumen Summary**

Zone	Lumens	%Lamp	%Fixture
0-30	971	15.4	25.2
0-40	1593	25.3	41.4
0-60	2868	45.5	74.6
0-90	3846	61.0	100.0
90-180	0	0.0	0.0
0-180	3846	61.0	100.0
Total Luminaire Efficiency = 61.0%			

**Candela**

Angle	Along II	45°	Across ⊥
0	1243	1243	1243
5	1238	1237	1241
15	1184	1194	1209
25	1086	1116	1149
35	942	1001	1038
45	765	842	934
55	562	689	824
65	360	531	706
75	195	347	545
85	41	63	93
90	0	0	0



**204-BX40W**  
(4) F40BX/SPX35/RS  
3150 Lumens

Efficiency 62.8%

Test Report

#NVLAP 168P140

(Consult factory for I.E.S. data not included within this report.)

**Coefficients of Utilization**

rc	Effective floor cavity reflectance																			
	80%				70%				20%				0%							
	rw	70	50	30	10	70	50	30	10	50	30	10	50	30	10	50	30	10	0	
<b>RCR</b>																				
0	75	75	75	75	73	73	73	73	70	70	70	67	67	67	64	64	64	63		
1	68	65	63	60	67	64	61	59	61	59	57	59	57	55	56	55	54	53		
2	62	57	52	49	60	56	51	48	53	50	47	51	48	46	49	47	45	43		
3	57	50	45	41	55	49	44	40	47	43	39	45	42	39	44	41	38	37		
4	52	44	38	34	50	43	38	34	42	37	33	40	36	33	39	35	33	31		
5	47	39	33	29	46	38	33	29	37	32	28	35	31	28	34	31	28	26		
6	43	35	29	25	42	34	29	25	33	28	24	32	27	24	31	27	24	23		
7	40	31	25	21	39	31	25	21	30	25	21	29	24	21	28	24	21	20		
8	37	28	22	18	36	27	22	18	27	22	18	26	21	18	25	21	18	17		
9	34	25	20	16	33	25	19	16	24	19	16	23	19	16	22	18	16	14		
10	31	23	17	14	31	22	17	14	22	17	14	21	17	14	21	17	14	13		

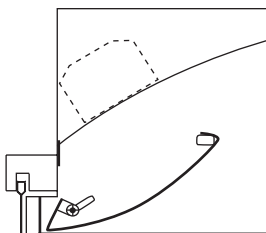
**Zonal Lumen Summary**

Zone	Lumens	%Lamp	%Fixture
0-30	1966	15.6	24.8
0-40	3234	25.7	40.8
0-60	5835	46.3	73.7
0-90	7919	62.8	100.0
90-180	0	0.0	0.0
0-90	7919	62.8	100.0
Total Luminaire Efficiency = 62.8%			

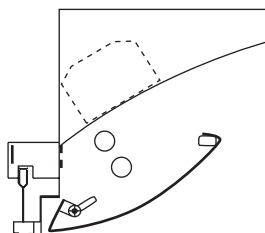
**Candela**

Angle	Along II	45°	Across ⊥
0	2517	2517	2517
5	2499	2505	2511
15	2397	2419	2439
25	2207	2260	2319
35	1922	2039	2105
45	1562	1739	1861
55	1142	1420	1651
65	722	1128	1392
75	374	809	1091
85	89	151	196
90	0	0	0

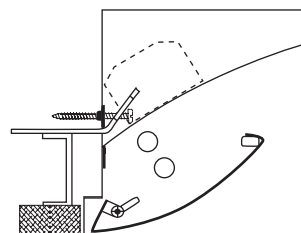
MOUNTING INFORMATION



**ETG**  
EXPOSED TEE GRID



**STG**  
SLOT TEE GRID



**SR**  
SHEET ROCK