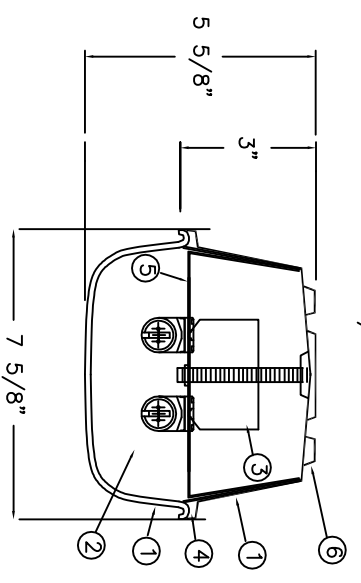


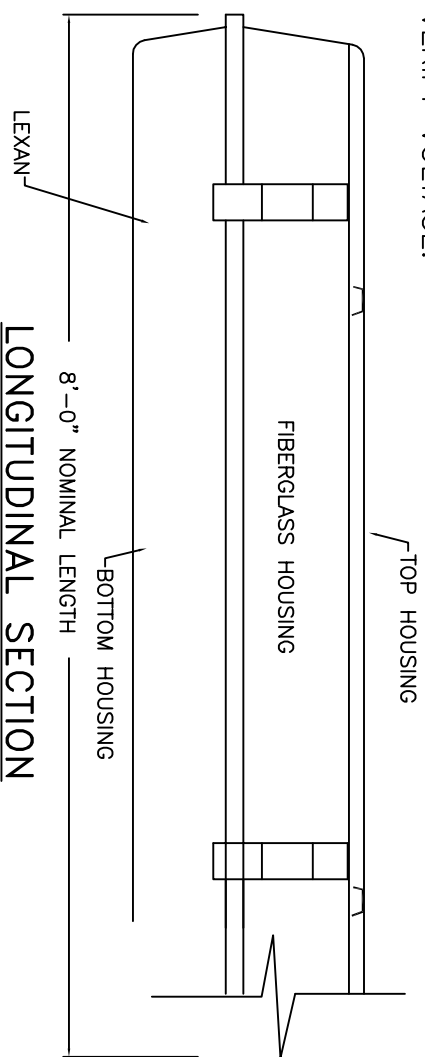
DTF SERIES  
VANDAL PROOF W/ LEXAN LENS

ALL ENCLOSED GASKETED FITTINGS BY OTHERS,  
E.E. TO VERIFY VOLTAGE.

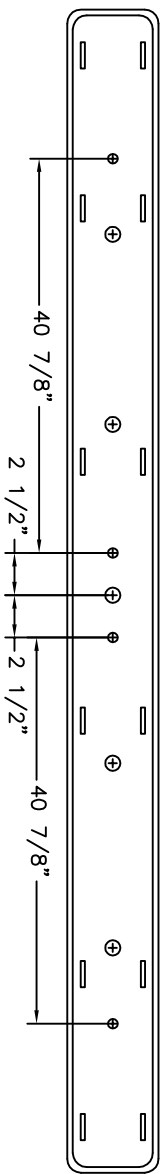
**TYPE:**



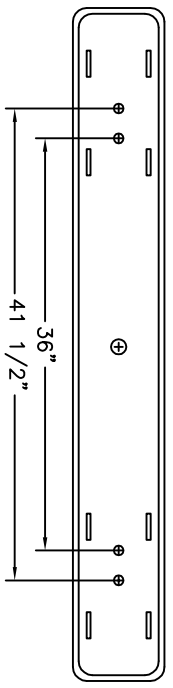
**CROSS SECTION**



**LONGITUDINAL SECTION**



**TOP VIEW 8'**



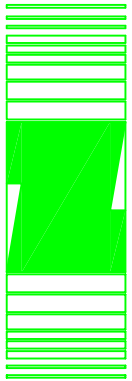


**TOP VIEW 4'**

**SPECIFICATIONS**

- ① HOUSING-- TO BE FORMED FROM MOLDED GLASS FIBRE 50% DR  
ASTM 635-56D, NO OPEN HOLES  
ALL FIXTURE ARE PRE-WIRED, UL LISTED.
- ② BALLAST-- HPF T5 PROGRAM START ELECTRONIC BALLAST  
WET LOCATION BALLAST  
VOLTAGE: TO BE SPECIFIED 120V/277V EB
- ③ LAMP-- 28W T5/HO LAMPS (BY OTHERS)  
2 LIGHT CROSS SECTION
- ④ SEAL-- CLOSED CELL NEOPRENE GASKETING BONDED  
TO THE HOUSING TO FORM A CONTINUOUS SEAL TO THE DIFFUSER.
- ⑤ INTERNAL PARTS-- TO BE FORMED FROM 20GA  
FINISH: BAKED WHITE ENAMEL.  
ALL STEEL PARTS ARE PHOSPHATE TREATED FOR  
CORROSION RESISTANCE BEFORE PAINT  
PROCEDURE THEN BAKED WITH SUPERIOR  
ADHESION FOR DURABILITY
- ⑥ MOUNTING-- ALL HOUSINGS TO BE SURFACE MOUNTED AS SHOWN,  
UNLESS OTHERWISE SPECIFIED

NOTE: ALL HOLES MUST BE DRILLED IN THE FIELD  
TO MAINTAIN THE INTEGRITY OF THE U.L. LABEL.

REV	COMMENTS	DATE	BY
PROJECT:			
CATALOG:			
DTF-228W-T5-EG-VOLT-EB-8' / 4'			
 			
			
NATIONAL LIGHTING COMPANY, INC. 522 CORTLANDT ST. BELLEVILLE, NJ 07109 NJ 973-751-1600 NY 212-751-1800 FAX 973-751-4931			
LIGHTING DESIGNER:			
ENGINEER:			
ARCHITECT:			
CONTRACTOR:			
DISTRIBUTOR:			
DWG NO:	DWG BY:	DATE	
SP03292012	S.P.	03/29	