



LED InstantFit Lamps

16.5T8/24-5000 IF-6U 10/1

Philips InstantFit LED Lamp, U-Bent (16.5W / 2100 lm / 5000K)

Philips LED T8 InstantFit Lamps are an ideal energy saving choice for existing linear fluorescent fixtures.

Product data

• General Information

Cap-Base	Medium Bi-Pin [Medium Bi-Pin]
Main Application	Industrial
Nominal Lifetime (Nom)	40000 h
Switching Cycle	50000X
B50L70	40000

• Light Technical

Color Code	850 [CCT of 5000K (2)]
Beam Angle (Nom)	160 °
Luminous Flux (Rated) (Nom)	2150 lm
Rated Beam Angle	160 °
Correlated Color Temperature (Nom)	5000 K
Color Consistency	6 steps
Color Rendering Index (Nom)	83
LLMF At End Of Nominal Lifetime (Nom)	70 %

• Operating and Electrical

Input Frequency	50 to 60 Hz
Power (Rated) (Nom)	16.5 W
Starting Time (Max)	0.5 s
Warm Up Time To 60% Light (Nom)	instant full light
Power Factor (Min)	0.9
Voltage (Nom)	120-277 (ballast dependent) V

• Temperature

T-Ambient (Max)	45 °C
T-Ambient (Min)	-20 °C
T-Storage (Max)	65 °C
T-Storage (Min)	-40 °C
T-Case Maximum (Nom)	50 °C

• Controls and Dimming

Dimmable	No
----------	----

• Mechanical and Housing

Product Length	600 mm
----------------	--------

• Approval and Application

Energy Saving Product	Yes
Suitable For Accent Lighting	No
Energy Efficiency Label (EEL)	A+
Approbation Marks	CE marking UL certificate RoHS compliance KEMA Keur certificate
Energy Consumption kWh/1000 h	16.5 kWh

• Product Data

Order product name	16.5T8/24-5000 IF-6U 10/1
EAN/UPC - Product	046677452698
Order code	452698

PHILIPS

LED InstantFit Lamps

Numerator - Quantity Per Pack 1
 Numerator - Packs per outer box 10

Material Nr. (12NC) 929001119904
 Net Weight (Piece) 0.270 kg

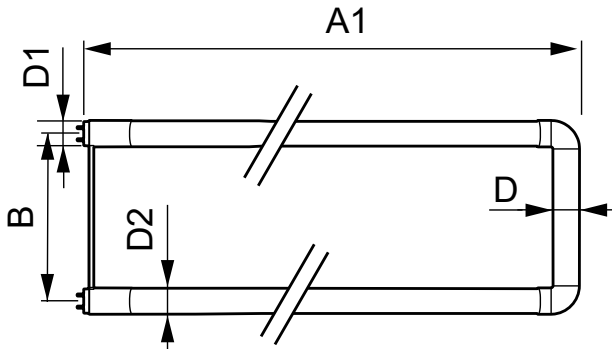
Warnings and Safety

- Perform a visual inspection to ensure lamp holders (or sockets) are not damaged or loose. If the lamp holders (or sockets) are damaged,

corroded, charred, blackened or loose, contact a qualified electrician for proper replacement.

- Please refer to the ballast compatibility guide located at www.philips.com/instantfit.

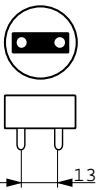
Dimensional drawing



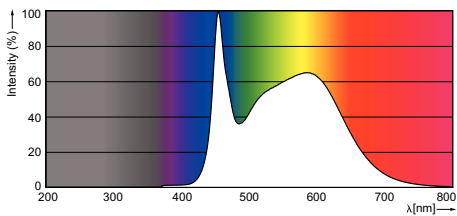
LEDtube 600 mm 16,5 W

LEDtube 600mm 16.5W/850 160D

Product	D1	D2	A1	A2	A3
16.5T8/24-5000 IF-6U 10/1	25.68 mm	28 mm	570 mm	577.1 mm	577.1 mm



Photometric data





© 2016 Philips Lighting Holding B.V.
All rights reserved.

Specifications are subject to change without notice. Trademarks are the property of Koninklijke Philips N.V. (Royal Philips) or their respective owners.

www.philips.com/lighting

2016, May 27
data subject to change