



# LED InstantFit Lamps

17T8/48-4000 IFG 10/1

Philips InstantFit LED Lamp, 4ft. Glass (17W / 2100 lm / 4000K)

Philips LED T8 InstantFit Lamps are an ideal energy saving choice for existing linear fluorescent fixtures.

## Product data

### • General Information

Cap-Base	Medium Bi-Pin [ Medium Bi-Pin]
Main Application	Industrial
Nominal Lifetime (Nom)	36000 h
Switching Cycle B50L70	50000X 36000

### • Light Technical

Color Code	841 [ CCT of 4100K (841)]
Beam Angle (Nom)	240 °
Luminous Flux (Rated) (Nom)	2100 lm
Rated Beam Angle	240 °
Correlated Color Temperature (Nom)	4000 K
Color Consistency	6 steps
Color Rendering Index (Nom)	82
LLMF At End Of Nominal Lifetime (Nom)	70 %

### • Operating and Electrical

Input Frequency	50 to 60 Hz
Power (Rated) (Nom)	17 W
Starting Time (Max)	0.5 s
Warm Up Time To 60% Light (Nom)	instant full light
Power Factor (Min)	0.9
Voltage (Nom)	120-277 (ballast dependent) V

### • Temperature

T-Ambient (Max)	35 °C
T-Ambient (Min)	-20 °C
T-Storage (Max)	65 °C
T-Storage (Min)	-40 °C
T-Case Maximum (Nom)	60 °C

### • Controls and Dimming

Dimmable	No
----------	----

### • Mechanical and Housing

Product Length	1200 mm
----------------	---------

### • Approval and Application

Energy Saving Product	Yes
Suitable For Accent Lighting	No
Energy Efficiency Label (EEL)	A+
Approbation Marks	CE marking UL certificate RoHS compliance KEMA Keur certificate
Energy Consumption kWh/1000 h	20 kWh

### • Product Data

Order product name	17T8/48-4000 IFG 10/1
EAN/UPC - Product	046677456566
Order code	456566

# PHILIPS

# LED InstantFit Lamps

Numerator - Quantity Per Pack 1  
Numerator - Packs per outer box 10

Material Nr. (12NC) 929001151104  
Net Weight (Piece) 0.001 kg

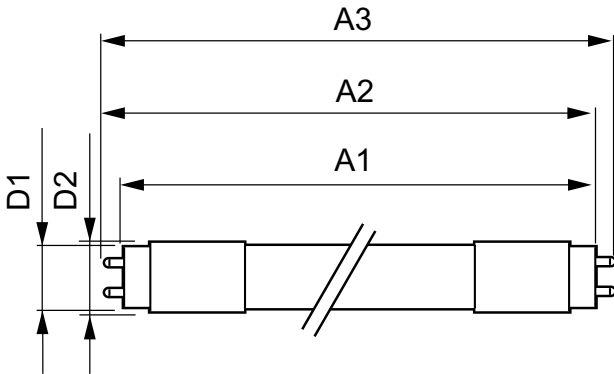
## Warnings and Safety

- Perform a visual inspection to ensure lamp holders (or sockets) are not damaged or loose. If the lamp holders (or sockets) are damaged,

corroded, charred, blackened or loose, contact a qualified electrician for proper replacement.

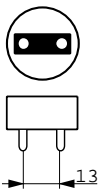
- Please refer to the ballast compatibility guide located at [www.philips.com/instantfit](http://www.philips.com/instantfit).

## Dimensional drawing

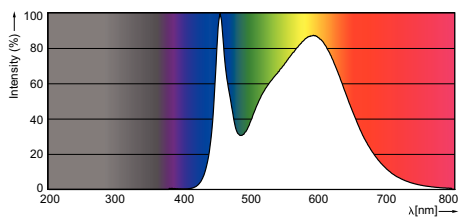


### LEDtube 1200mm 17W G13/840

Product	D1	D2	A1	A2	A3
17T8/48-4000 IFG 10/1	25.68 mm	28 mm	1198.0 mm	1205.0 mm	1212.0 mm



## Photometric data





© 2016 Philips Lighting Holding B.V.  
All rights reserved.

Specifications are subject to change without notice. Trademarks are the property of Koninklijke Philips N.V. (Royal Philips) or their respective owners.

[www.philips.com/lighting](http://www.philips.com/lighting)

2016, May 27  
data subject to change