



LED InstantFit Lamps

20T12 EM LED/48-4000 IF G 10/1

Philips LED T8 InstantFit Lamps are an ideal energy saving choice for existing linear fluorescent fixtures.

Product data

• General Information

Cap-Base	Medium Bi-Pin [Medium Bi-Pin]
Main Application	Industrial
Nominal Lifetime (Nom)	36000 h
Switching Cycle	50000X

• Light Technical

Color Code	841 [CCT of 4100K (841)]
Beam Angle (Nom)	240 °
Initial lumen (Nom)	2100 lm
Luminous Flux (Rated) (Nom)	2100 lm
Rated Beam Angle	240 °
Correlated Color Temperature (Nom)	4000 K
Color Consistency	6 steps
Color Rendering Index (Nom)	82
LLMF At End Of Nominal Lifetime (Nom)	70 %

• Operating and Electrical

Input Frequency	60 Hz
Power (Rated) (Nom)	20 W
Lamp Current (Max)	220 mA
Lamp Current (Min)	90 mA
Starting Time (Nom)	0.5 s
Warm Up Time To 60% Light (Nom)	0.1 s
Power Factor (Nom)	0.9
Voltage (Nom)	120-270 V

• Temperature

T-Ambient (Max)	-20 °C
T-Ambient (Min)	35 °C
T-Storage (Max)	65 °C
T-Storage (Min)	-40 °C
T-Case Maximum (Nom)	65 °C

• Controls and Dimming

Dimmable	No
----------	----

• Mechanical and Housing

Product Length	1200 mm
----------------	---------

• Approval and Application

Energy Saving Product	Yes
Suitable For Accent Lighting	No
Energy Efficiency Label (EEL)	A+
Approbation Marks	RoHS compliance UL certificate
Energy Consumption kWh/1000 h	23 kWh

• Product Data

Order product name	20T12 EM LED/48-4000 IF G 10/1
EAN/UPC - Product	046677463113
Order code	463117

PHILIPS

LED InstantFit Lamps

Numerator - Quantity Per Pack 1
Numerator - Packs per outer box 10

Material Nr. (12NC) 929001226504
Net Weight (Piece) 0.001 kg

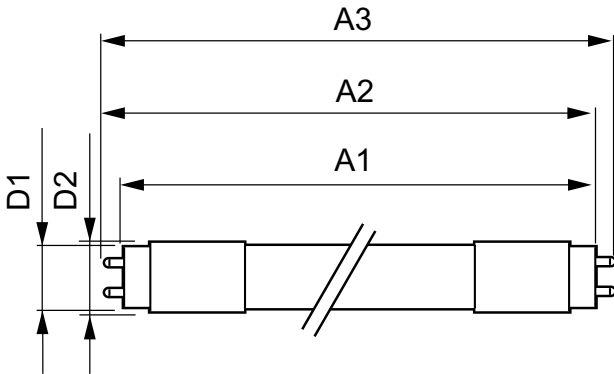
Warnings and Safety

- Perform a visual inspection to ensure lamp holders (or sockets) are not damaged or loose. If the lamp holders (or sockets) are damaged,

corroded, charred, blackened or loose, contact a qualified electrician for proper replacement.

- Please refer to the ballast compatibility guide located at www.philips.com/instantfit.

Dimensional drawing



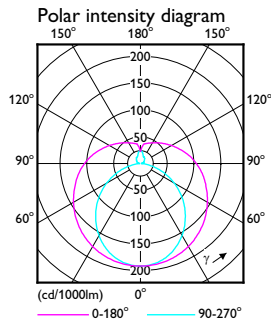
TLED T12 120-277V 20-34/40W 4000K G13 ND

Product	D1	D2	A1	A2	A3
20T12 EM LED/48-4000 IF G 10/1	26 mm	28 mm	1198 mm	1205 mm	1212 mm

General Uniform Lighting

1 x TLED 20W 4000K 240D 9290012265

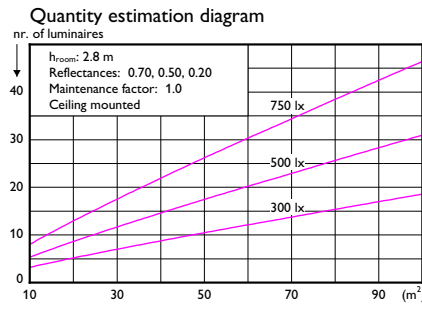
1 x 2100 lm



Light output ratio 1.00
 Service upward 0.27
 Service downward 0.73

CIE flux code 36 64 85 73 100

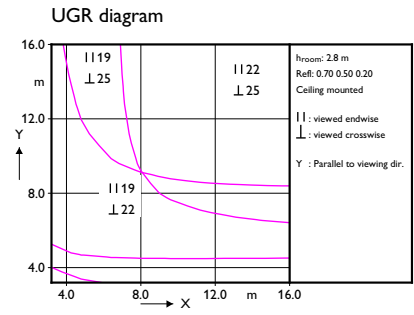
UGRcen (4Hx8H, 0.25H) 23



Utilisation factor table

Room Index k	Reflectances (%) for ceiling, walls and working plane (CIE)											
	0.80	0.80	0.70	0.70	0.70	0.70	0.50	0.50	0.30	0.30	0.00	0.00
0.60	0.40	0.38	0.38	0.37	0.36	0.29	0.27	0.22	0.25	0.21	0.17	
0.80	0.50	0.47	0.47	0.46	0.44	0.37	0.34	0.29	0.31	0.27	0.22	
1.00	0.58	0.53	0.54	0.53	0.51	0.43	0.40	0.35	0.36	0.32	0.27	
1.25	0.65	0.60	0.62	0.59	0.57	0.50	0.46	0.41	0.42	0.38	0.31	
1.50	0.72	0.65	0.67	0.65	0.62	0.55	0.50	0.45	0.46	0.42	0.35	
2.00	0.81	0.72	0.76	0.72	0.69	0.63	0.57	0.53	0.52	0.49	0.41	
2.50	0.87	0.77	0.82	0.78	0.74	0.68	0.62	0.58	0.57	0.54	0.46	
3.00	0.92	0.81	0.86	0.81	0.77	0.72	0.66	0.62	0.60	0.57	0.49	
4.00	0.98	0.85	0.92	0.86	0.81	0.77	0.71	0.67	0.65	0.62	0.53	
5.00	1.02	0.88	0.96	0.90	0.84	0.80	0.74	0.71	0.68	0.65	0.56	

Ceiling mounted

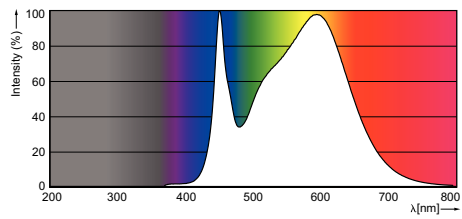


Luminance Table

Plane C/m	0.0	15.0	30.0	45.0	60.0	75.0	90.0
45.0	5048	5017	4991	5029	5217	5746	6980
50.0	4880	4834	4783	4782	4909	5376	6702
55.0	4731	4679	4600	4550	4598	4978	6389
60.0	4612	4550	4454	4353	4308	4588	6007
65.0	4513	4456	4328	4181	4040	4131	5539
70.0	4447	4391	4243	4053	3819	3686	4983
75.0	4429	4371	4210	3993	3651	3245	4267
80.0	4446	4378	4229	3977	3552	2820	3219
85.0	4481	4393	4259	4023	3529	2525	1766
90.0	4554	4468	4324	4092	3636	2527	1000

2016-03-15

LED InstantFit Lamps



© 2016 Philips Lighting Holding B.V.
All rights reserved.

Specifications are subject to change without notice. Trademarks are the property of Koninklijke Philips N.V. (Royal Philips) or their respective owners.

www.philips.com/lighting

2016, May 12
data subject to change