

**CONSTRUCTION** Extruded aluminum housing with cold rolled steel ends.

**REFLECTOR** Highly reflective die-formed specular anodized aluminum with asymmetric distribution.

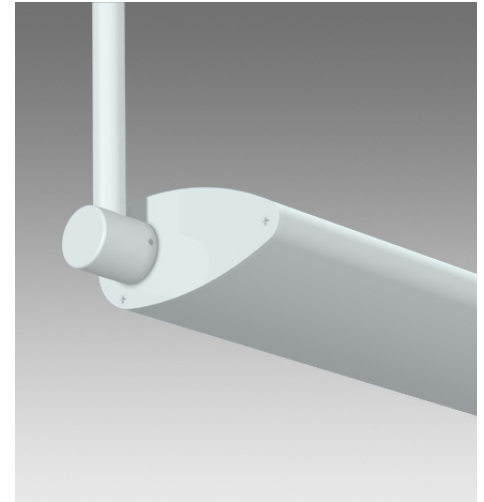
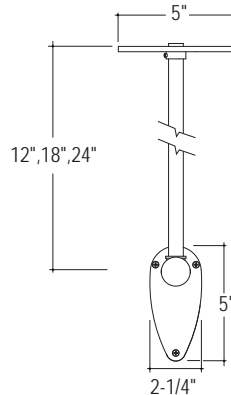
**LENS** Standard indoor fluorescent luminaires are "open" without lensing unless otherwise specified.

**ELECTRICAL** Standard T5 and T5HO: Program start 120/277 volt integral electronic ballast with less than 10% THD. Standard T8: Instant start 120/277 volt electronic ballast with less than 10% THD. Through wiring with quick connects standard. Standard single circuit. Each ballast provided with disconnects to meet luminaire disconnect code requirement.

**MOUNTING** Aluminum hub assembly mounts easily to structure with 5" round canopy. Wire leads are fed through stem. Threaded stems mount onto hub at fixture. Stems and canopy are painted to match the fixture housing unless otherwise specified.

**FINISH** Standard powder-coat textured white painted finish. Consult factory for custom color and finishes.

**LABELS** cUL Listed and approved for dry/damp location.



**LUMINAIRE SPECIFICATION**

Sample Catalog #: VU-1T5-24-PH18-120-1C-W

| PRODUCT   | LAMPS   | LENGTH  | MOUNTING   | VOLTAGE   | CIRCUITING  | FINISH   | OPTIONS  |
|---|---|---|--|---|---|--|--|
| VU- Vertigo<br>Linear indoor<br>luminaire<br>indirect (UP)  | 1T5- (1) T5<br>1T5HO- (1) T5HO<br>2T5- (2) T5<br>2T5HO- (2) T5HO<br>1T8- (1) T8 | Individual Units<br>3- 3'<br>4- 4'<br>6- 6'<br>8- 8'                        | PH__- Pendant Hub <sup>1</sup><br>(specify O.A.L., 12", 18" or 24")<br>PHS__- Pendant Hub Swivel <sup>1</sup><br>(specify O.A.L., 12", 18" or 24") | 120- 120 V<br>277- 277 V<br>347- 347 V <sup>2</sup><br>UNV- UNV <sup>2</sup><br>(120/277) | 1C- Single Circuit<br>2C- Dual Circuit <sup>3</sup><br>1D- Single Circuit Dimming <sup>3</sup><br>2D- Dual Circuit Dimming <sup>3</sup><br>1B- Single Circuit with Battery Pack <sup>3</sup><br>2B- Dual Circuit with Battery Pack <sup>3</sup><br>1E- Single Circuit with Emergency Circuit <sup>3</sup><br>2E- Dual Circuit with Emergency Circuit <sup>3</sup> | W- Matte White<br>S- Metallic Silver<br>CC- Custom Color | B- Baffle <sup>4</sup><br>A- Acrylic Lens <sup>5</sup> |
| VD- Vertigo<br>Linear<br>indoor luminaire,<br>direct (DOWN) |   | Continuous Runs<br>xx'- Specify nominal overall row length in 1' increments |  |   |   |  |  |

<sup>1</sup>Consult factory for additional pendant hub lengths.

<sup>2</sup>347 volt and UNV not available with battery packs.

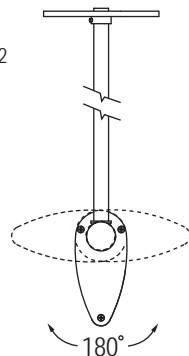
<sup>3</sup>Some Vertigo configurations will not accommodate all electrical options. Consult factory.

<sup>4</sup>Baffle to match housing finish.

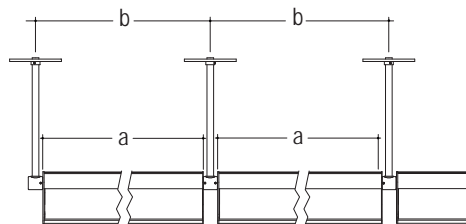
<sup>5</sup>Baffle and Lens not available together.

**ROTATION**

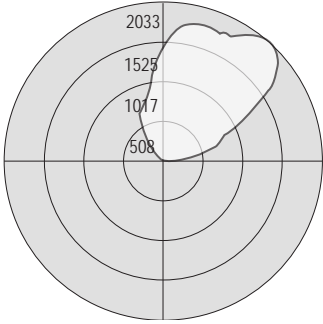
Hub allows for 90 degree rotation of the fixture head in either direction. Move fixture head to desired position and secure hub onto fixture bushing using 2 set screws.



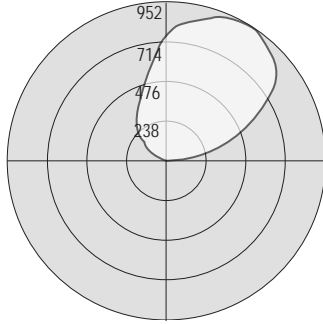
**MOUNTING DIMENSION**



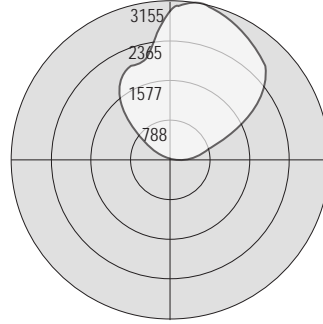
|                   | Individual Units |         |         |         |
|-------------------|------------------|---------|---------|---------|
|                   | 3'               | 4'      | 6'      | 8'      |
| a. Nominal Length | 36-1/4"          | 48-1/4" | 72-1/4" | 96-1/4" |
| b. Mount Spacing  | 37-5/8"          | 49-5/8" | 73-5/8" | 97-5/8" |



Test # 202270  
Lamp: (1) 54 Watt T5HO  
Total Luminaire Efficiency: 95.5%



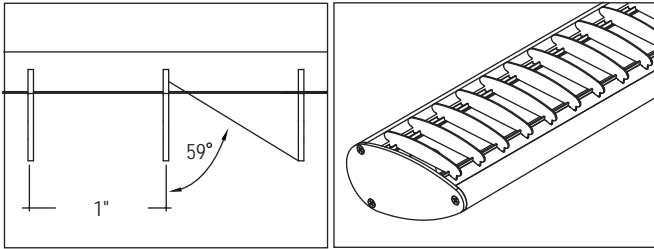
Test # 202271  
Lamp: (1) 32 Watt T8  
Total Luminaire Efficiency: 77.8%



Test # 202272  
Lamp: (2) 54 Watt T5HO  
Total Luminaire Efficiency: 90.0%

FEATURES AND OPTIONS

• EXTERNAL BAFFLE



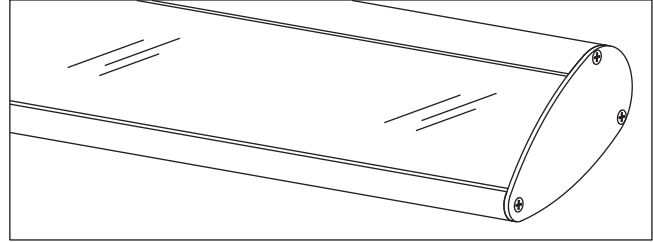
Application: External Baffle controls glare and reduces light output by 15%. Recommended when lengthwise shielding of lamp is required.

Construction: Curved baffles are high reflective white painted aluminum blades. Blade height is 5/8" and spaced 1" on center. Baffles are field installed and feature a snap in attachment allowing for easy lamp replacement.

Ordering Information: Indicate "B" in the Options section of the part number. (Sample Catalog #: V-1T5HO-4-PH12-120-W-B).

Restriction: External Baffle is not available in conjunction with Acrylic Lens.

• ACRYLIC LENS



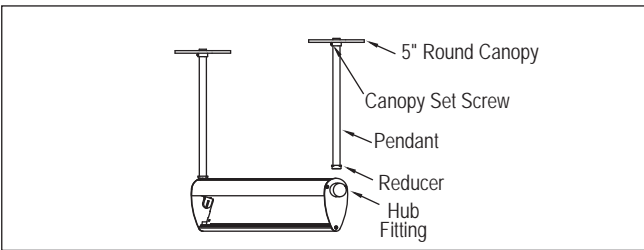
Application: Acrylic lens prevents particle ingress for interior environments.

Construction: One-piece UV stabilized curved linear prismatic acrylic lens. Acrylic lens is removable allowing for easy lamp replacement.

Ordering Information: Indicate "A" in the Options section of the part number. (Sample Catalog #: V-1T5HO-4-PH12-120-W-A).

Restriction: Acrylic lens is not available in conjunction with External Baffle.

• MOUNTING DETAIL



Assembly: Pendant screws into crossbar of junction box. Secure canopy with set screw. Hub fitting screws onto pendant. Fixture wires are fed through pendant. Hub fits over fixture bushing and secured using 2 set screws.

| Individual Length | Nominal Row Length |   |   |   |   |   |    |    |    |    |    |    |    |    |    |    |    |    |    |    |    |    |    |    |    |    |    |    |    |    |    |    |    |    |    |    |    |    |    |   |   |   |   |
|-------------------|--------------------|---|---|---|---|---|----|----|----|----|----|----|----|----|----|----|----|----|----|----|----|----|----|----|----|----|----|----|----|----|----|----|----|----|----|----|----|----|----|---|---|---|---|
|                   | 3                  | 4 | 6 | 7 | 8 | 9 | 10 | 11 | 12 | 13 | 14 | 15 | 16 | 17 | 18 | 19 | 20 | 21 | 22 | 23 | 24 | 25 | 26 | 27 | 28 | 29 | 30 | 31 | 32 | 33 | 34 | 35 | 36 | 37 | 38 | 39 | 40 | 41 | 42 |   |   |   |   |
| 3                 | 1                  |   |   | 1 |   | 3 | 2  | 1  |    | 1  | 2  | 1  |    | 1  |    | 1  |    | 3  |    | 1  |    | 1  |    | 1  |    | 1  |    | 1  |    | 1  |    | 1  |    | 1  |    | 1  |    | 1  |    | 1 |   | 1 |   |
| 4                 |                    | 1 |   | 1 |   |   | 1  | 2  |    | 1  |    | 1  |    |    |    |    |    |    | 2  |    |    | 1  |    | 1  | 1  |    | 1  |    |    | 1  |    | 1  |    | 1  | 1  |    | 1  |    | 1  |   | 1 |   | 1 |
| 6                 |                    |   | 1 |   |   |   |    |    | 2  | 1  |    |    |    | 1  | 3  |    | 2  | 2  | 1  | 2  |    | 1  | 1  |    |    | 1  | 1  |    |    | 1  | 1  |    |    | 1  | 1  |    |    | 1  | 1  |   |   | 1 | 1 |
| 8                 |                    |   |   |   | 1 |   |    |    |    |    |    | 1  | 1  | 2  | 1  |    | 2  | 1  |    | 2  |    | 3  | 2  | 2  | 3  | 3  | 2  | 3  | 3  | 4  | 3  | 3  | 4  | 4  | 3  | 4  | 4  | 3  | 4  | 4 | 5 | 4 | 4 |