

9

JOB NAME:

FIXTURE TYPE:



SLIM LINE / RAPID START CHANNEL

FEATURES

- Available in 2', 3', 4', 6', 8', and 16' lengths, in 1, 2, and 3 lamp configurations.
- Combination snap in end plates double as couplers, eliminate the need for extra hardware in continuous row applications.
- Snap on cover makes installation quick and easy.
- For surface, pendant, or chain mounting, individual or continuous rows.
- Symmetric, asymmetric, and wall wash reflectors available.
- Available with energy efficient reflectors in specular silver (95% reflectance) or specular aluminum (85% reflectance).
- For full complement of Accessories to enhance ease of installation refer to **Options**.

SPECIFICATIONS

- **HOUSING**
Die formed heavy gauge steel with knockouts for stems or chain hangers.
- **ELECTRICAL**
Energy saving electronic ballasts comply with Federal Energy Efficiency standards. Ballasts operate on 120V-277V (UNV) unless specified otherwise.
- **FINISH**
All metal parts pre-painted with high gloss baked white enamel with minimum 89% reflectance applied over iron phosphate pretreatment for maximum adhesion and rust resistance.
- **CERTIFICATION**
All units bear UL and Made in U.S.A. labels. Damp location label optional.



9 Series

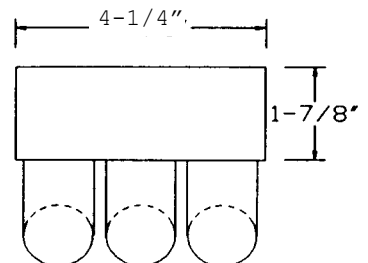
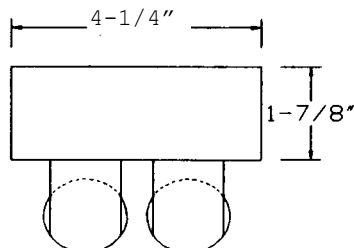
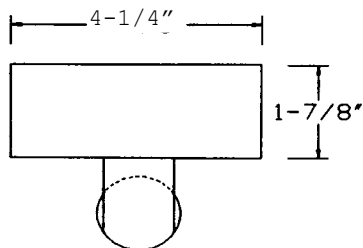
Ordering Matrix

CATALOG NUMBER T8	LAMPS	LENGTH	CATALOG NUMBER T5	LAMPS	LENGTH
9-132	1-F32T8	48"	9-214T5	2-FP14T5	24"
9-132-8TD	2-F32T8	96"	9-221T5	2-FP21T5	36"
9-196	1-F96T8	96"	9-228T5	2-FP28T5	48"
9-196-16TD	2-F96T8	192"	9-314T5	3-FP14T5	24"
9-217	2-F17T8	24"	9-321T5	3-FP21T5	36"
9-225	2-F25T8	36"	9-328T5	3-FP28T5	48"
9-232	2-F32T8	48"	9-224T5HO	2-FP24T5HO	24"
9-232-8TD	4-F32T8	96"	9-239T5HO	2-FP39T5HO	36"
9-317	3-F17T8	24"	9-254T5HO	2-FP54T5HO	48"
9-325	3-F25T8	36"	9-324T5HO	3-FP24T5HO	24"
9-332	3-F32T8	48"	9-339T5HO	3-FP39T5HO	36"
9-332-8TD	6-F32T8	96"	9-354T5HO	3-FP54T5HO	48"
9-296T8	2-F96T8	96"			

Options:

- 20 Gauge NYC housing – suffix NYC
- Specular Silver Reflector – suffix SS95
- Specular Aluminum Reflector – suffix SS85
- Damp Location Label – suffix DL
- Symmetric Reflector – suffix SR
- Asymmetric Reflector – suffix AR
- Wall Wash Light Shield – suffix L

Dimensions:



** Low power rapid start ballast. For critical application verify all dimensions with factory.
 For additional Lamp/Ballast options, consult factory.*