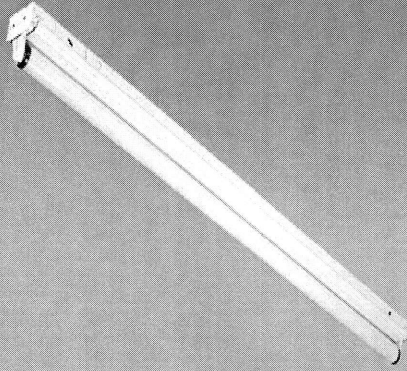


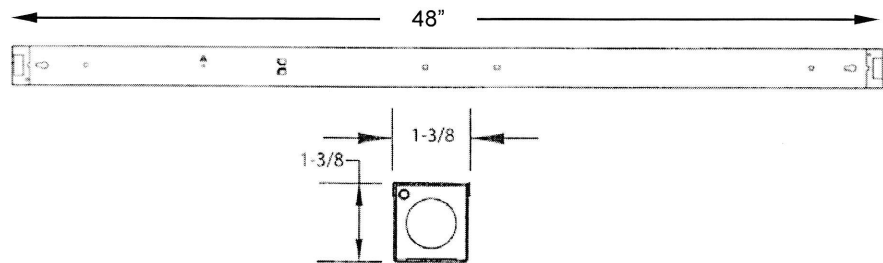
5. Strips & Industrials

Single Lamp Low Profile Strip

ST



DIMENSIONS



Dimensions are subject to change. For critical applications, verify all dimensions with factory.



Available in nominal 2', 3', 4' lengths in 1-lamp configurations, T5, 13W, 14W, 21W, 28W or T5-HO 24W, 39W and 54W. Fully assembled housing for individual or continuous row mounting. Predrilled mounting holes for easy installation. Can be fed through end or back of unit. Suitable for low density ceiling applications. Symmetric, asymmetric, and light shield and swivel adjustable reflectors available. Snap-on diffusers in clear or opal available. Available with energy efficient reflectors in specular silver (95% reflectance) or specular aluminum (85% reflectance).

HOUSING

Die formed heavy gauge steel housing with ample knockouts for ease of installation.

ELECTRICAL

Energy saving electronic ballasts comply with Federal Energy Efficiency standards. Ballasts are <10% THD and include 5 year manufacturer's warranty. Ballasts operate on 120V-277V (UNV) unless specified otherwise.

FINISH

All parts pre-painted with high gloss baked white enamel with minimum 89% reflectance applied over iron phosphate pretreatment for maximum adhesion and rust resistance.

CERTIFICATION

All units bear UL label. Made in U.S.A. Suitable for damp location. ARRA and BAA compliant.

ORDERING

MODEL	LAMP QTY	WATTAGE/TYPE	VOLTAGE
ST	1	4W T5 - (9" length)	120
		6W T5 - (12" length)	277
		8W T5 - (15" length)	UNV
		13W T5 - (21" length)	
		14W T5 - (22 7/16" length)	
		21W T5 - (34 1/4" length)	
		28W T5 - (46" length)	
		54W T5HO - (46" length)	
		15W T8 - (18" length)	
		17W T8 - (24" length)	
		25W T8 - (36" length)	
		32W T8 - (48" length)	

OPTIONS:

- EM - Emergency
- DM - Dimming
- SR - Symmetric Reflector
- AR - Asymmetric Reflector
- LS - Wall Wash Light Shield
- WG - Wire Guard
- CK24 - 24" Chain Kit
- SA95 - High Efficiency Specular Reflector
- SA87 - Specular Reflector
- WH92 - High Efficiency White Reflector



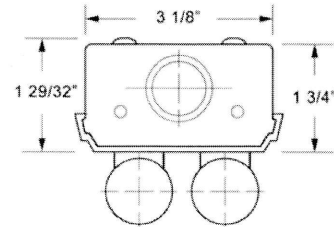
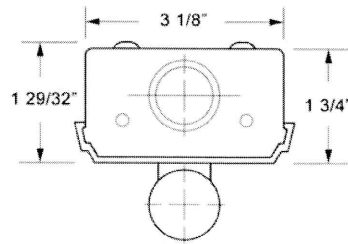
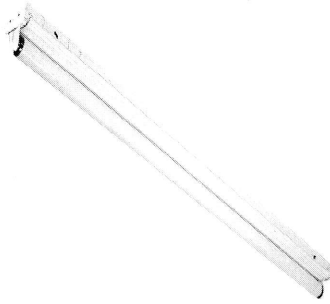
JOB NAME:
FIXTURE TYPE:
MODEL NO:

5. Strips & Industrials

Single Or Dual Lamp Channel

S

DIMENSIONS



Dimensions are subject to change. For critical applications, verify all dimensions with factory.



Available in 24", 36", 48", 72" and 96" lengths in 1 or 2 lamp configurations, T5, T5HO, and T8. Combination snap in end plates double as couplers, eliminate the need for extra hardware in continuous row applications. Snap on cover makes installation quick and easy. Suitable for low density ceiling applications. Symmetric, asymmetric, and light shield reflectors available. For surface or pendant mounting, individual or continuous row mounting. Available with specular aluminum reflector (87% reflectance) high efficiency white reflector (92% reflectance) or high efficiency specular aluminum reflector (95% reflectance).

HOUSING

Die formed heavy gauge steel housing with ample knockouts for ease of installation.

ELECTRICAL

Energy saving electronic ballasts comply with Federal Energy Efficiency standards. Ballasts are <10% THD and include 5 year manufacturer's warranty. Ballasts operate on 120V-277V (UNV) unless specified otherwise.

FINISH

All parts finished with high gloss baked white enamel with minimum 89% reflectance applied over iron phosphate pretreatment for maximum adhesion and rust resistance.

CERTIFICATION

All units bear UL label. Made in U.S.A. Suitable for damp location. ARRA and BAA compliant.

ORDERING

MODEL	LAMPS	WATTAGE/TYPE	VOLTAGE
S 2' unit	1	17T8	120
	2	14T5	277
		24T5HO	UNV
3' unit	1	25T8	
	2	21T5	
		39T5HO	
4' unit	1	32T8	
	2	28T5	
		54T5HO	
6' unit	1	25T8-6TD	
	2	21T5-6TD	
		39T5HO-6TD	
8' unit	1	32T8-8TD	
	2	28T5-8TD	
		54T5HO-8TD	

OPTIONS

EM - Emergency

DM - Dimming

SA95 - High Efficiency Specular Reflector

SA87 - Specular Reflector

WH92 - High Efficiency White Reflector

SR - Symmetric Reflector

AR - Asymmetric Reflector

LS - Wall Wash Light Shield



JOB NAME:

FIXTURE TYPE:

MODEL NO: