

TECHNICAL DATA

TYPICAL APPLICATIONS

- Private Offices
- Conference Rooms
- Individual Bathrooms (no stalls)
- Janitor Closets
- Hallways & Stairwells
(3-Way or 4-Way)

SENSOR HIGHLIGHTS

- Patent Pending 2-Wire: No Ground
- Small Motion Detection up to 20 Feet
- SPDT Dry Contacts: AC or DC
- Works on all voltages up to 347 VAC
- No Minimum Load
- Optional Vandal-Resistant
- Optional No-Switch Models
- Optional Photocell/Daylight Override

FEATURES

- Time Delay: 2, 10, or 20 mins
- Three-Way and Multi-Level Switching Compatibility
- Green LED Activity Indicator

SPECIFICATIONS

- Size: 4.2"H x 1.8"W x 1.4" Deep
- Sensor Weight: 5 Ounces
- Sensor Colors: Ivory, White, Gray, and Almond
- Mounting Height: 30 to 48 inches
- Relative Humidity: 20 to 90% non-condensing
- Operating Temp: 14° to 85° F
- Storage Temp: -14° to 160° F
- 30 VDC @ 10 Amps
- 120 VAC @ 800 W
- 277 VAC @ 1200 W
- 347 VAC @ 1500W
- 1/4 HP Motor Load
- Frequency: 50/60 Hz
- UL and CUL Listed
- 5-Year Warranty
- Made In USA

LOW TEMP/HI HUMIDITY (-LT)

- Conformally Coated PCB
- Operates down to -40° F
- Corrosion resistant from moisture

IPD Series

2-Wire: No Ground Req'd

A two wire Decorator Sensor that has no minimum load! Ideal for applications where ground is not present, such as in older facilities. If ground is no problem, see WSD product information.



Standard

No Switch

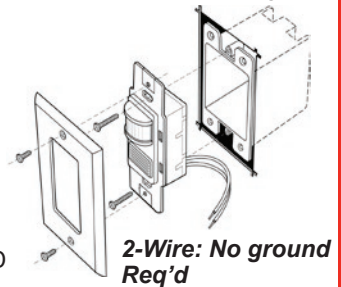
SENSOR OPERATIONS

These sensors use PIR detection to sense occupancy in a space and initiate the lights to an "On" condition. The time delay (typically 10 minutes) keeps the lights "On" during brief periods of no activity. The IPD provides excellent PIR detection at shorter distances (less than 20 feet). The electronic frequency response and sensitivity to movement is factory calibrated for maximum performance. This state-of-the-art design allows the sensor to adapt to its environment, eliminating the need for manual field adjustments.

LED INDICATOR

The IP Series sensors are equipped with a green LED indicator used to determine when motion is detected.

To activate the LED, the manual switch is turned to the "Off" position. The LED will then be operational for approximately 1 minute. After that time, the LED will be turned "Off" automatically.



TIME DELAY ADJUSTMENT

The IP Series sensor offers 3 selectable time delays: 2, 10, and 20 minutes. To set at 10 minutes, turn the adjustment fully counterclockwise (you will feel and hear a slight click). The center setting is 2, and fully clockwise is 20 minutes. *Note: If the adjustment is not fully counterclockwise and "locked in place", the setting will remain at 2 minutes.* The 10-minute setting is suitable for most applications.

STANDARD VS. VANDAL RESISTANT LENS

The **Standard** lens provides maximum PIR detection sensing small movements up to 20 feet. This lens should be used in typical offices or rooms where occupants work for extended periods of time. The **Vandal Resistant** lens should be used in high abuse or public areas, where occupants simply come and go and make larger types of motions. Copy rooms, small public restrooms, storage or janitor's closets are ideal applications. The PIR detection is reduced by 50%.

SWITCH OR NO SWITCH OPTION

The IPD sensor offers a manual Auto/Off slide switch for turning off the lights while the room is occupied. In applications such as stairwells with 3 and 4-way switching, or public areas where overriding the sensor off will cause a nuisance, the No Switch option is preferred.

PHOTOCELL/DAYLIGHT OVERRIDE OPTION (IPD-P)

The IPD offers a Photocell override option (-P) for spaces with abundant natural light. Ideal for public places with windows like vestibules, corridors, or bathrooms. Not recommended for work spaces where occupants set light levels manually. *Note:* Once the lights turn "On", the photocell function is disabled until the sensor times out and turns "Off". Adjustments: Rotate the PC adjustment fully clockwise. If too sensitive, back off setting slightly. For more specific photocell control or dimming, see the CM-PC-ALC technical data information.

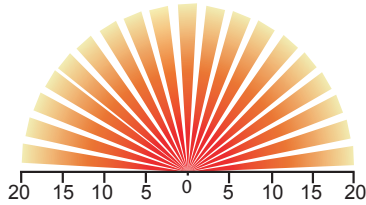
Part Numbering System: IPD-[Lens/Switch]-[Photocell]-[Voltage]-[Color*]

LENS/SWITCH	PHOTOCELL	VOLTAGE	COLOR	LO TEMP/HI HUMIDITY
Blank = Standard Lens w/Switch	Blank = No Photocell	Blank = 120-277 VAC	-I = Ivory	Blank = 14° to 160° F
-VS = Vandal Resistant w/Switch	-P = w/Photocell	-3 = 347 VAC**	-W = White	-LT = -40° to 160° F
-VN = Vandal Resistant w/o Switch			-G = Gray	
-SN = Standard Lens w/o Switch			-A = Almond	

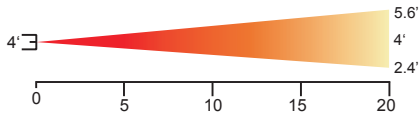
**347 V: Plate not provided

*Must specify color

TOP VIEW



SIDE VIEW



- Multi-gang installation
- Multi-level switching
- Standard 2-gang plate not included

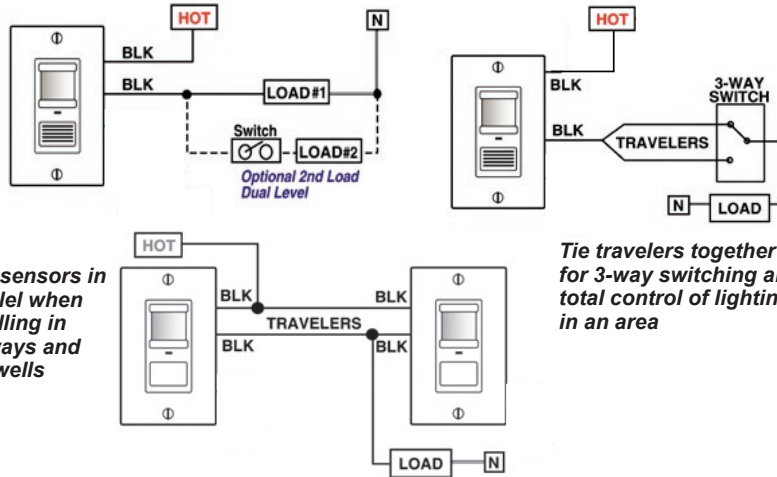
AREA OF COVERAGE

The PIR collector beams view out horizontally in a wall-to-wall pattern. The beams will see out to 50 feet, however, the effectiveness in the Standard product is 20 feet for small hand or body motions and 10 feet for the Vandal Resistant products.

THREE-WAY SWITCHING

Typically in hallways and stairwells, an IPD replaces each 3-way or 4-way switch. The travelers are used to wire the sensors in parallel. If the entire room can be viewed from one switch location (i.e., conference room with two doors), tie the travelers together to one of the IPD's Black wires. The other switch becomes non-functional.

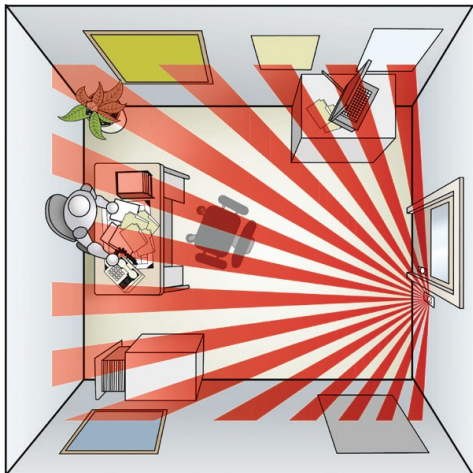
TYPICAL WIRING DIAGRAM



Wire sensors in parallel when installing in hallways and stairwells

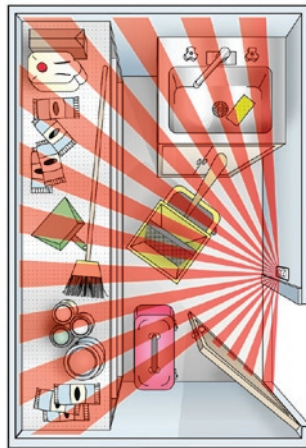
Tie travelers together for 3-way switching and total control of lighting in an area

Note: Black wire is replaced with a Red wire for 347 VAC.



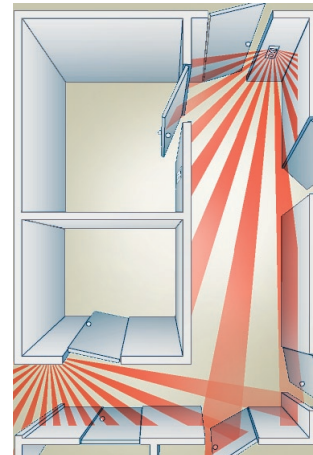
Small Office (IPD)

- Excellent small motion detection up to 20 feet
- Reduces energy usage by 30 to 50%
- PIR technology best choice for small areas with no obstructions



Janitor Closet (IPD-VS)

- Convenient - No fumbling in the dark for the switch
- Reduces light usage to less than 500 hours per year
- More cost effective than changing out to fluorescents



Hallway (IPD-SN or -VN)

- Effective in multiple switch applications
- Sensors use travelers as conductors in parallel
- Avoids long low-voltage wire runs
- 3-Way, or 4-Way switch replacements, also ideal for stairwells

WARRANTY: Sensor Switch, Inc. warrants these products to be free of defects in manufacture and workmanship for a period of sixty months. Sensor Switch, Inc., upon prompt notice of such defect will, at its option, provide a Returned Material Authorization number and a replacement product.
LIMITATIONS AND EXCLUSIONS: This Warranty is in full lieu of all other representation and expressed and implied warranties (including the implied warranties of merchantability and fitness for use) and under no circumstances shall Sensor Switch, Inc. be liable for any incidental or consequential property damages or losses.



SENSOR SWITCH, INC.
 900 Northrop Rd., Wallingford, CT 06492
 (203) 265-2842 info@sensorswitch.com
 www.sensorswitch.com

revised 01/18/2005
 copyright Sensor Switch, Inc. 2004