

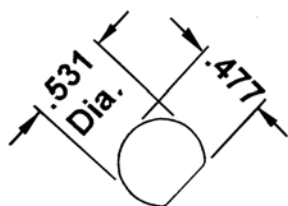
SWIVELIER

ADJUSTABLE LIGHTING

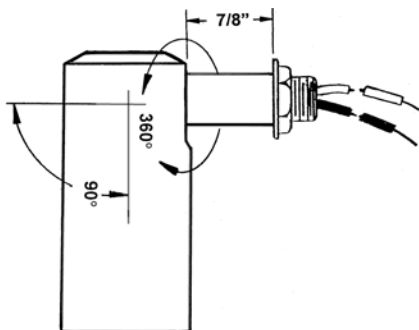
LITE-FLEX SWIVEL SOCKET WITH 1/4-18 MALE NPS THREADED STEM



L21500



Mounting Details



L21500: Lite-Flex Swivel on Threaded Stem

Dimensions: Swivel Socket: L 3"; W 1-3/8"
Wire Leads: 6"

Lamps: Up to 150 Watt PAR-38 Halogen Reflector Lamps
(lamp not included)

Specify Color: (BK) Black, (WH) White

Accessories: 29835 Clip-On Cylinder for PAR-38 Lamp

SWIVEL LIGHT FOR CUSTOM MOUNTS

Universally adjustable swivel light has a keyed 1/4-18 male threaded stem with lock washer and lock nut for attachment. Use to create lighting troughs, illuminate cabinet interiors, attach to custom equipment, shapes & surfaces.

Use for general, spot lighting accent, texture, task and highlighting. Attach threaded stem lights to merchandise displays, exhibits; light bars, and cabinets. Light up almost anything.

Unit provided with 6 inch pre-stripped wire leads.

Use with Halogen reflector PAR-14, PAR-16, PAR-20, up to 60 watts, or PAR-30 (long or short neck) up to 100 watts, or PAR-38 lamps, up to 150 watts.

Lite-Flex swivel operates on 120V current. For safety wiring connections are made internally to eliminate shock hazard. Medium base socket is rated 660W-250V.

Available on special order with a longer 1-3/4" stem length. Add suffix "LN" to number (L21500WH/LN)

Swivelier's patented spring tension swivel rotates a full 360° and angles 90°. The swivel socket stays put without levers or set screws. A touch of the finger puts the light in any direction you desire for maximum flexibility.