

EssentialLEDs

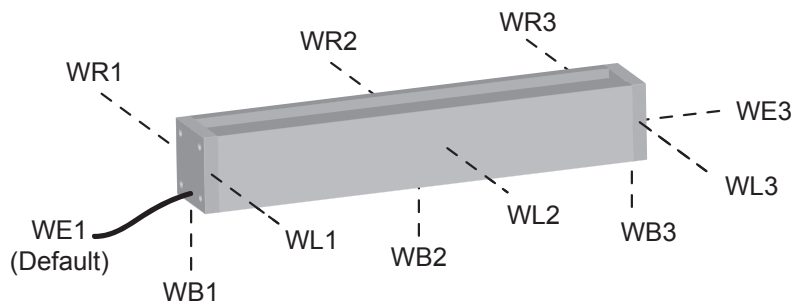
LINEAR

WIRE EXITS & CONNECTORS

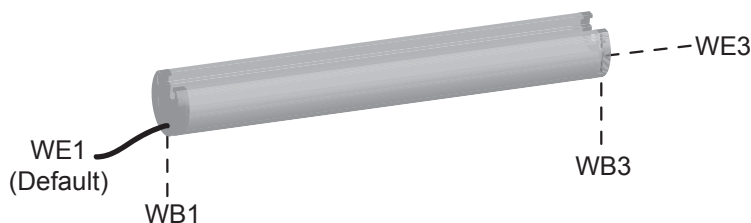
For "daisy-chain" configurations, dual wire exits must be specified via "Daisy-Chain Termination" Accessory on page 13.

SQUARE EXTRUSIONS

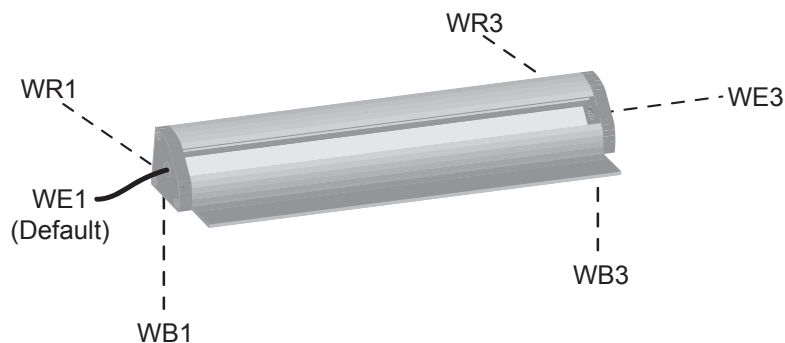
(1S Extrusion available with WE1 or WE3 options ONLY.)



ROUND EXTRUSIONS

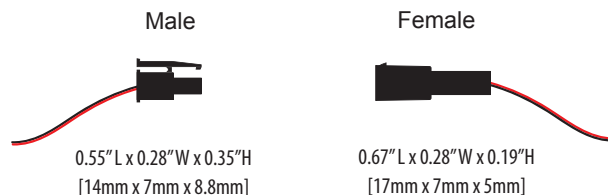


QUARTER ROUND EXTRUSION



CONNECTORS

Fixtures come with 96" [2.44m] of 20 AWG [0.518mm²] wire and male Tyco Mate'n Lock connector as standard; customization available; connector can be removed for hard wired installation. Starter, splitter and interconnect wiring accessories available for easy installation; see page 13.



WIRING ACCESSORIES

To Specify "Daisy-Chained" Configurations: In certain applications, "Daisy-Chained" configurations provide the best wiring solution. Use the "Daisy-Chain Termination" Accessory to specify EVERY fixture to be daisy-chained; refer to page 12 for Wire Exit options; see example below. Daisy-Chained lengths CANNOT exceed a TOTAL of 44 watts per run!

Starter Cables have bare wires on one end to connect directly to LED driver terminals or to wires via wire nuts, and one (1) female connector for connection to a linear fixture, splitter accessory, or interconnect wire.

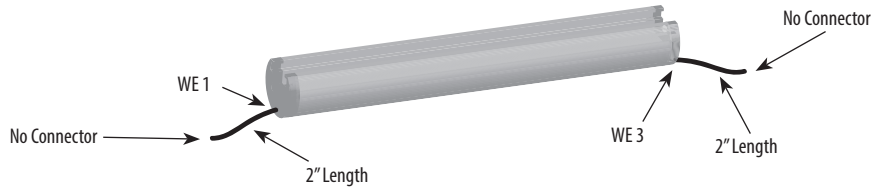
Splitters connect multiple fixtures to a single driver; 2-way, 4-way or 8-way options; one (1) male connector, multiple female connectors.

Interconnect Wires extend wiring between driver and fixture or between splitter accessory and fixture; (1) one female connector, (1) one male connector.

DAISY-CHAIN TERMINATION	CAT. NO.	ELL - AC - DCT -	LEFT SIDE	RIGHT SIDE
			WE1 WR1 WL1 WB1	WE3 WR3 WL3 WB3
			Wire Length in Inches	Wire Length in Inches
			NC MC FC	NC MC FC

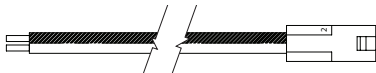
Specify two wire exits, two wire lengths, and two connectors for each fixture to be daisy-chained.

Sample specification: ELL - AC - DCT - WE1 - 2" - NC / WE3 - 2" - NC



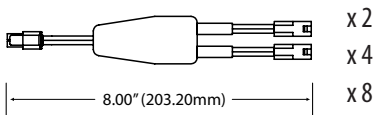
NC	No Connector
MC	Male Connector
FC	Female Connector

2 FT or 8 FT STARTER CABLE	SPECIFICATIONS	CAT. NO.	ELL - AC - SC -
			2 8



Description: Bare wires and female connector. Bare wires connect to LED driver terminals or to wires via wire nuts; female connector connects directly to fixture, splitter or interconnect wire. 2' or 8' lengths.

2-, 4- or 8 - WAY SPLITTER	SPECIFICATIONS	CAT. NO.	ELL - AC - SPL -
			2 4 8



Description: One male connector with multiple female connectors. Allows 2, 4 or 8 fixtures to connect to a single driver; male connector connects to starter cable; female connectors connect to fixtures or interconnect wires. Overall length 8"; Each female connector 3" long.

INTERCONNECT WIRES	SPECIFICATIONS	CAT. NO.	ELL - AC - ICW -
			2 4 5 10



Description: One male and one female connector for extending connection between driver and fixture or between driver and splitter accessory. Can also be used for "daisy chain" connections between fixtures; see directions for "daisy chain" applications above. 2', 4', 5' and 10' lengths.