

**Monopoint Canopy Adapter****Model JMP**

**Description:** Used to mount a single "J" series track fixture over a junction box. Looks best with line volt track heads. For low volt models see section on "Surface Mount" track heads.

**Finish:** Available in White or Black.

**Listing:** UL & CUL Listed, New York City Approved.

**Dimensions:** 4 3/4"

**Wide 2-Wire "I" Connector****Model JI**

**Description:** Connects two "JT" tracks in a straight line.

**Finish:** Available in White or Black.

**Listing:** UL & CUL Listed, New York City Approved.

**Dimensions:** 3"L

**Wide 2-Wire "I" Dead End Straight Line Connector Model JI-DEC**

**Description:** Connects two "JT" tracks in a straight line, but does not allow power to pass through.

**Finish:** Available in White or Black.

**Listing:** UL & CUL Listed, New York City Approved.

**Dimensions:** 3"L

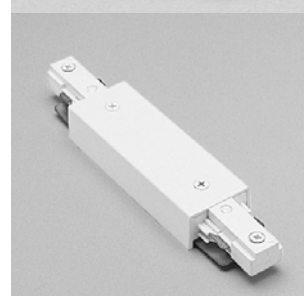
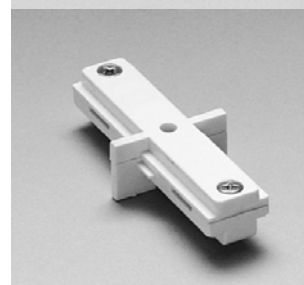
**Wide 2-Wire "I" Straight Line Power Connector Model JI-PWR**

**Description:** Connects two "JT" tracks in a straight line, and is a power entry point. Accepts wires from above the ceiling, with knock out for trade size connector.

**Finish:** Available in White or Black.

**Listing:** UL & CUL Listed, New York City Approved.

**Dimensions:** 7 1/8"



W.A.C. reserves the right to change details that do not affect overall function and performance.

**2 Wire Monopoint Canopy Adapter****Model LMP**

**Description:** Used to mount a single "L" series track fixture over a junction box. Looks best with line volt track heads. For low volt models see section on "Surface Mount" track heads.

**Finish:** Available in White or Black.

**Listing:** UL & CUL Listed, New York City Approved.

**Dimension:** 4 3/8"

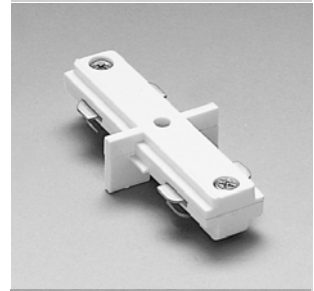
**2 Wire "I" Connector****Model LI**

**Description:** Connects two "LT" tracks in a straight line.

**Finish:** Available in White or Black.

**Listing:** UL & CUL Listed, New York City Approved.

**Dimension:** 3"L

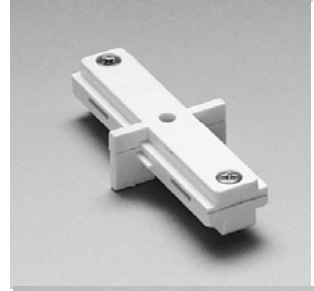
**2 Wire "I" Dead End Straight Line Connector****Model LI-DEC**

**Description:** Connects two "LT" tracks in a straight line, but does not allow power to pass through.

**Finish:** Available in White or Black.

**Listing:** UL & CUL Listed, New York City Approved.

**Dimension:** 3"L

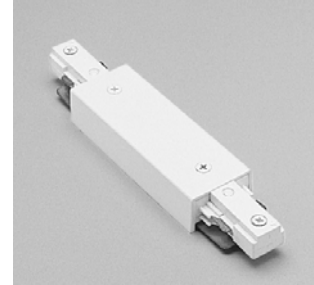
**2 Wire "I" Straight Line Power Connector****Model LI-PWR**

**Description:** Connects two "LT" tracks in a straight line, and is a power entry point. Accepts wires from above the ceiling, with knock out for trade size connector.

**Finish:** Available in White or Black.

**Listing:** UL & CUL Listed, New York City Approved.

**Dimension:** 6 3/4"L



W.A.C. reserves the right to change details that do not affect overall function and performance.